



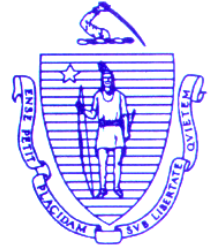
David E. Pierce
Director

Commonwealth of Massachusetts

Division of Marine Fisheries

251 Causeway Street, Suite 400
Boston, Massachusetts 02114

(617)626-1520
fax (617)626-1509



Charles D. Baker
Governor

Karyn E. Polito
Lieutenant Governor

Matthew A. Beaton
Secretary

Ronald Amidon
Commissioner

Mary-Lee King
Deputy Commissioner

April 1, 2019

Board of Selectmen
Town of Wellfleet
Town Hall
Wellfleet, MA 02667

Ladies & Gentlemen:

On March 26, 2019 the Division of Marine Fisheries received a petition from the Town of Wellfleet Board of Selectmen to extend the bay scallop season in Wellfleet Outer Harbor (CCB11) in the Town of Wellfleet. The Division has investigated the circumstances related to the bay scallop fishery and conducted sampling surveys, in coordination with the Town of Wellfleet Shellfish Constable, to assess bay scallop condition and population composition in the outer harbor. The Division agrees that there is an abundance of adult bay scallops in good condition not harvested prior to the termination of the normal bay scallop season, which ended on March 31, 2019. Furthermore, it is believed that most of these adult scallops will not live long enough to spawn again this coming summer. Therefore, under authority of MGL Chapter 130, Section 73, the bay scallop season in the Town of Wellfleet is extended through **April 15, 2019** in order to allow an additional 14 days of bay scallop harvest. Permission is hereby granted to the Board of Selectman to issue permits to take scallops during the extended season.

No “seed” scallops as defined in MGL Chapter 130, Section 70 and 322 CMR, Section 6.11, may be taken under any circumstances without permission of the Director of Marine Fisheries. Scallops landed during this extended season may be inspected by Shellfish Program personnel to determine condition and legal size.

BAY SCALLOP SEASON EXTENSION

CLASSIFICATION: APPROVED

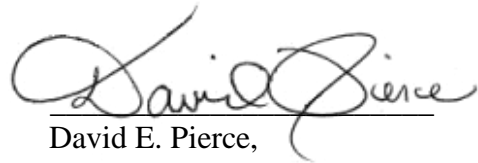
Status: Open to the taking of Bay Scallops through April 15, 2019

CCB:11.0

Wellfleet Harbor

“The waters, flats and all tributaries of Wellfleet Harbor in the Town of Wellfleet, northerly of a line drawn from Jeremy Point to the Eastham/Wellfleet Town Marker; easterly of a line drawn from the eastern tip of Great Island across to Chequesset Yacht Club Flagpole; westerly of a line drawn from the west end of the breakwater at Indian Neck to Shirttail Point; and westerly of a line drawn from the west end of Lieutenant Island to Field Point.”
(5,169 acres)

Sincerely,

A handwritten signature in black ink that reads "David E. Pierce". The signature is written in a cursive style with a horizontal line underneath the name.

David E. Pierce,
Director

cc: A. Abdal-Khabir, P. Moran, DELE
D. McKiernan, M. Hickey, T. Shields, DMF
R. Amidon, M. King, DFG
J. Hobill, DEP
FDA, DPH
N. Civetta, Wellfleet Shellfish Constable

The Town of Wellfleet notified DMF of interest in a bay scallop survey on 3-26-19 and forwarded a formal request from the Board of Selectmen to the Director on 3/29/19.

A bay scallop survey was conducted by Deputy Shellfish Constable Chris Manulla on 3/27/19 with a local bay scallop fisherman. A bushel of bay scallops, representing $\frac{3}{4}$ of the bay scallop catch, was provided to Christian Petitpas, the DMF shellfish biologist for the Town of Wellfleet.

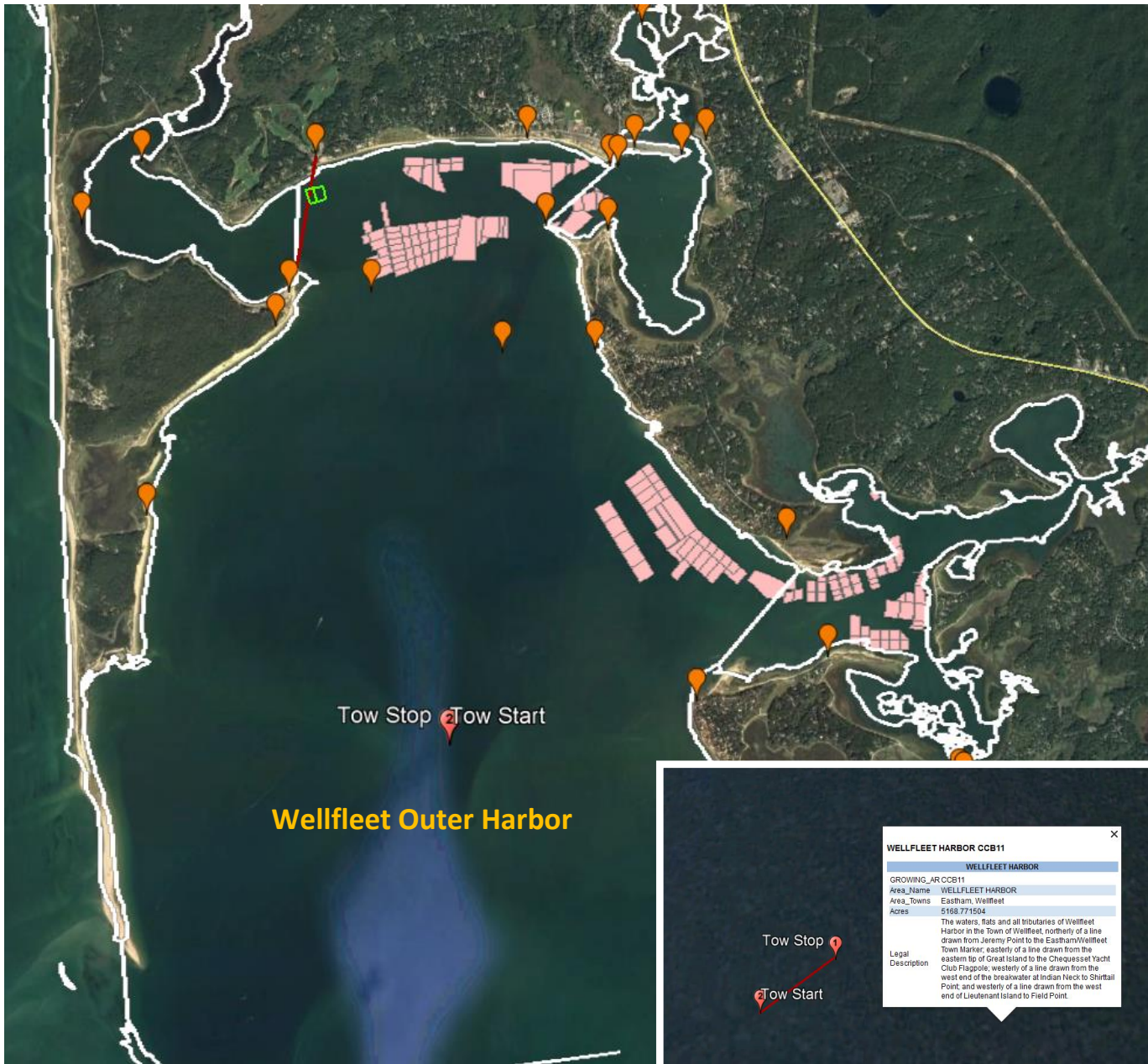
A single scallop tow was performed using a 48" drag on center between shoes with sweep chain.

Tow start time: 09:07 Tow start location: 41.895867°, -70.042717°

Tow stop time: 09:14 Tow stop location: -70.042667°, -70.042667°

Tow duration: 7 minutes

By-catch: 34 oysters(21 legal size), 9 blood arks, 2 horseshoe crabs (1 dead), 7 conch, 3 hermit crabs, rocks, orange tunicate



Sample Analysis: A total of 473 individual bay scallops comprised the bushel sampled from the single tow.

Adult bay scallops: 187 Nubs: 14 Seed bay scallops: 272

58% of the scallops in the bushel were seed. Two adults had second annulus ring indicating 2 years of growth.

	Adult			Nubs			Seed
	Total Height (mm)	Ring Height (mm)		Total Height (mm)	Ring Height (mm)		Total Height (mm)
	53	40		54	16		51
	65	50		60	21		61
	64	52		55	20		50
	70	50		60	15		32
	55	34	←2nd check at 53 mm	57	16		54
	55	49		55	11		41
	70	32		56	18		53
	66	40		58	20		51
	67	50		55	19		50
	65	51		59	11		56
	72	53		45	14		61
	70	59		60	10		51
	70	40	←2nd check at 52 mm	59	10		60
	67	55		60	11		50
	67	56	Max:	60.0	21.0		46
	63	51	Min:	45.0	10.0		49
	65	53	Mean:	56.6	15.1		51
	66	50					51
	65	63					50
	71	60					50
Max:	72	63				Max:	61
Min:	53	32				Min:	32
Mean:	65.3	49.4				Mean:	50.9

