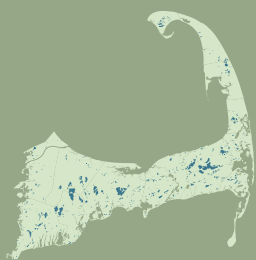


Wellfleet Ponds Profile

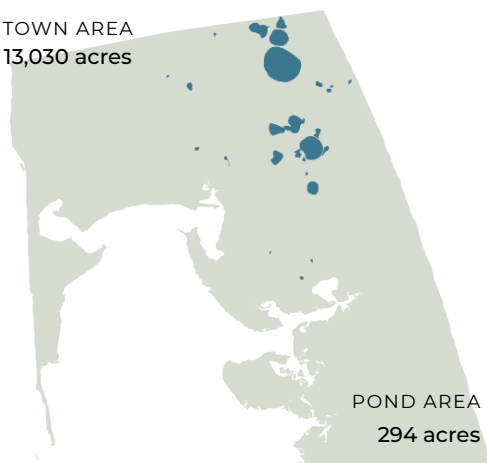
A RESOURCE OF THE CAPE COD FRESHWATER INITIATIVE



Water quality is critical to the vitality of the region's pond ecosystems and coastal embayments. Yet pollutants found in stormwater runoff, and in groundwater by which ponds are recharged, threaten the region's freshwater quality. Understanding the broad issues that impact Cape Cod's freshwater ponds, characteristics of the region's ponds, and actions at the local level all help set a baseline for understanding and action.

Wellfleet

TOWN AREA
13,030 acres



2% of total town area is comprised of freshwater ponds and lakes

Top 5 Largest Ponds

POND	AREA
1. Gull Pond	108.1 acres
2. Great Pond	44.0 acres
3. Long Pond	36.9 acres
4. Higgins Pond	26.7 acres
5. Herring Pond	18.9 acres

Top 5 Deepest Ponds

POND	DEPTH
1. Gull Pond	64 ft.
2. Great Pond	56 ft.
3. Duck Pond	55 ft.
4. Long Pond	50 ft.
5. Dyer Pond	36 ft.

- 25** PONDS
- 7** 10+ Acre Ponds
- 18** Named Ponds
- 12** ACRES Average Pond Size
- 29** FEET Average Pond Depth

1 Fish Stocked Ponds

0 Ponds Adjacent to Cranberry Bogs

0 Ponds that Cross Town Boundaries

8 Ponds with Public Access

6 State Listed Great Ponds

7% Impervious Surfaces in Pond 300ft Buffer

3 Ponds with Coastal Plain Pondshores

23 Ponds with Rare Species Habitat

Pond Monitoring

Of the town's 25 ponds, 0 have three consecutive years of recent monitoring data and 60% of all the ponds have available monitoring data. The data record for this monitoring spans 11 years with an average of 0.3 sampling events at each monitored pond per year.

15 Ponds Monitored

0 Ponds with 3 Consecutive Years of Recent Data (2016-2021)

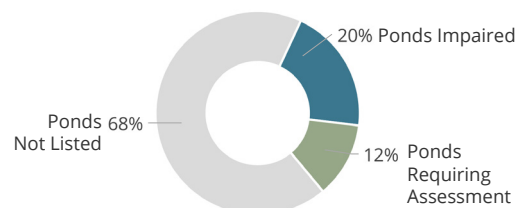
Water Quality Impairments

A lack of consistent and available monitoring data for all ponds means that we may be underestimating threats to waterbody health.

0 Harmful Algal Bloom Advisories Issued by EPA Since 2017

8 Ponds listed on MassDEP's Draft 2022 Integrated List of Waters

1 Freshwater Bathing Beaches with Sampling Failures for Fecal Coliform in 2022

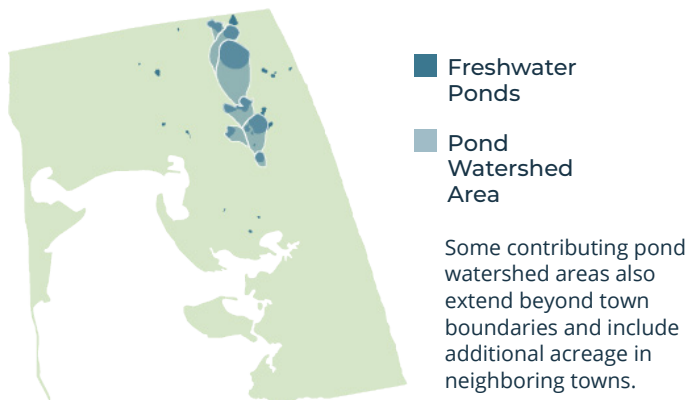


Wellfleet Ponds Profile

A RESOURCE OF THE CAPE COD FRESHWATER INITIATIVE

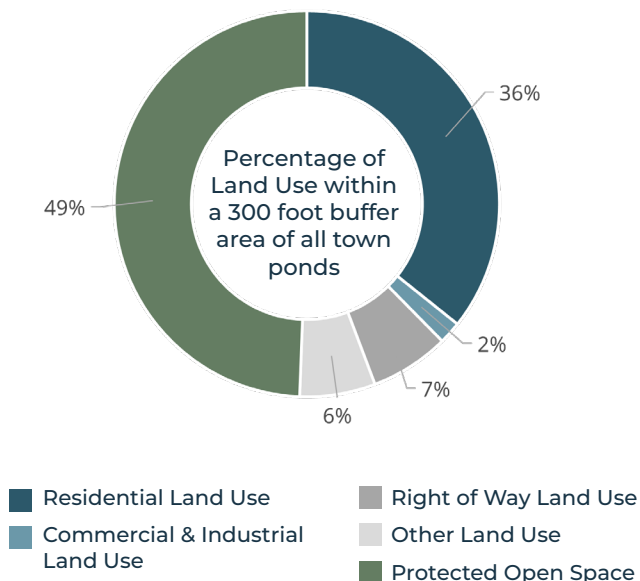
Pond Watersheds

The land area that contributes to freshwater ponds and lakes is referred to as a pond watershed. Relatively few pond watersheds have been delineated across the Cape. Land area within pond watersheds is much larger than the water bodies themselves. In Wellfleet, **5%** of the town's total land area is within a delineated pond watershed.



Land Use in Pond Buffer Area

Understanding the way that land is used around our freshwater ponds contributes to a better understanding of potential pond impacts, stressors, and viable strategies to protect or restore pond health. **451** acres (or **3%**) of the town's total land area is within 300 feet of a freshwater pond.



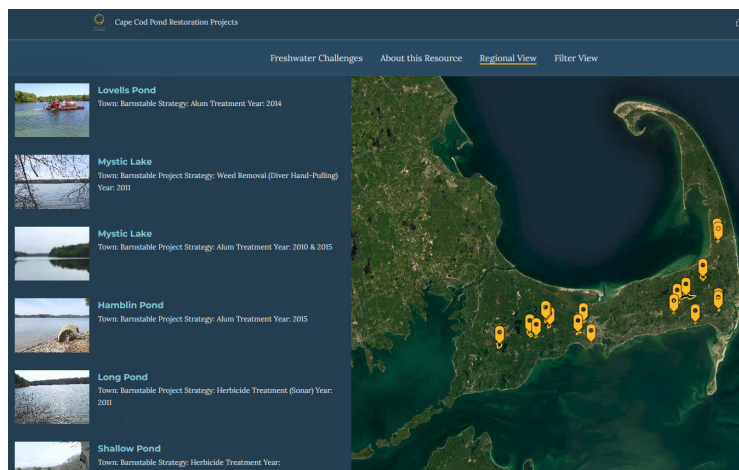
Documented Town Reports and Actions



Local Pond Organizations

Independent groups, organizing around a single or multiple ponds, voluntarily conduct educational and advocacy efforts and collect water quality monitoring data, which is not always available or sufficient for regional analysis.

- Gull Pond Area Conservation Association
- Friends of Herring River



Pond Strategies Implemented

Updates and additional projects will be added as information becomes available. Review project details at: cccom.link/pond-restoration-projects

There are **0** implemented pond strategies in the regional dataset.