

**WELLFLEET
ROUTE 6**

STATE	FED. AID PROJ. NO.	SHEET NO.	TOTAL SHEETS
MA	XXX-XXXX (XXX)	2	45
PROJECT FILE NO.		609098	

**KEY PLAN &
BORING LOCATIONS**

PAVEMENT NOTES

PROPOSED PAVEMENT MILLING AND OVERLAY

- 1 3/4" SUPERPAVE SURFACE COURSE - 12.5 (SSC-12.5) OVER
- 0.05 GAL/SY TACK COAT OVER
- 1 3/4" SUPERPAVE INTERMEDIATE COURSE - 12.5 (SIC-12.5) OVER
- 0.07 GAL/SY TACK COAT OVER
- 3 1/2" PAVEMENT MILLING PAVEMENT OVERLAY SHALL MEET EXISTING PAVEMENT AT A SQUARE BUTT JOINT

PROPOSED FULL DEPTH RECONSTRUCTION

- 1 3/4" SUPERPAVE SURFACE COURSE - 12.5 (SSC-12.5) OVER
- 0.05 GAL/SY TACK COAT OVER
- 1 3/4" SUPERPAVE INTERMEDIATE COURSE - 12.5 (SIC-12.5) OVER
- 0.05 GAL/SY TACK COAT OVER
- 4" SUPERPAVE BINDER COURSE - 37.5 (SBC-37.5) OVER
- 4" DENSE GRADE CRUSHED STONE OVER
- 8" GRAVEL BORROW TYPE B

PROPOSED CEMENT CONCRETE SIDEWALK/WALK/WHEELCHAIR RAMP

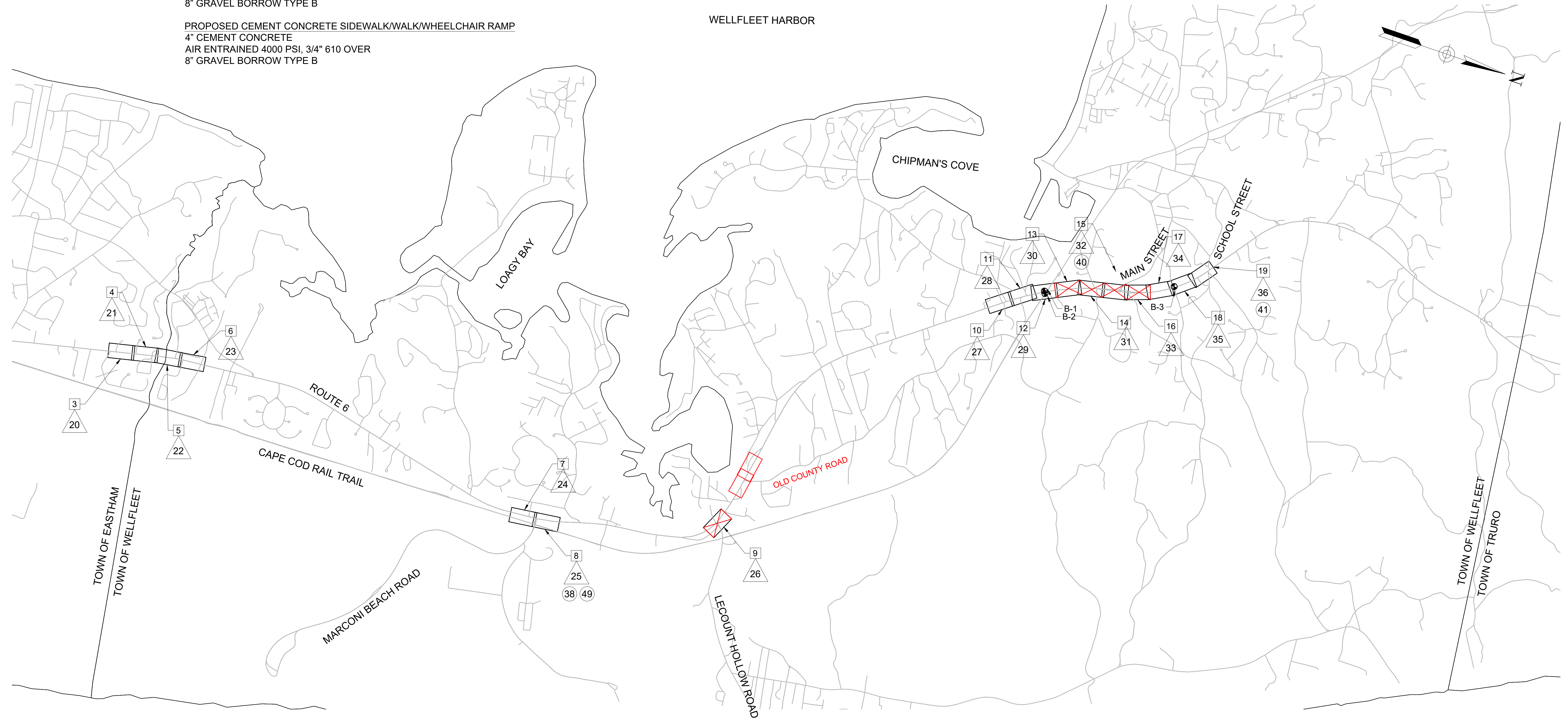
- 4" CEMENT CONCRETE
- AIR ENTRAINED 4000 PSI, 3/4" 610 OVER
- 8" GRAVEL BORROW TYPE B

PROPOSED LAWNS AND SLOPES

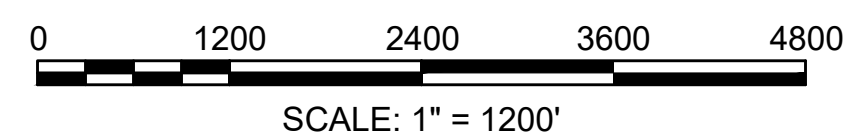
- 4" LOAM AND SEED

PROPOSED HMA DRIVEWAY

- 3 1/2" HOT MIX ASPHALT (HMA) PERFORMED IN TWO (2) 1 3/4" LIFTS OVER
- 8" GRAVEL BORROW (TYPE B)



- # CONSTRUCTION PLANS
- # TRAFFIC SIGNS AND PVMT MARKING PLANS
- # TRAFFIC SIGNAL PLANS



**WELLFLEET
ROUTE 6**

STATE	FED. AID PROJ. NO.	SHEET NO.	TOTAL SHEETS
MA	XXX-XXXX (XXX)	22	45
PROJECT FILE NO. 609098		609098	

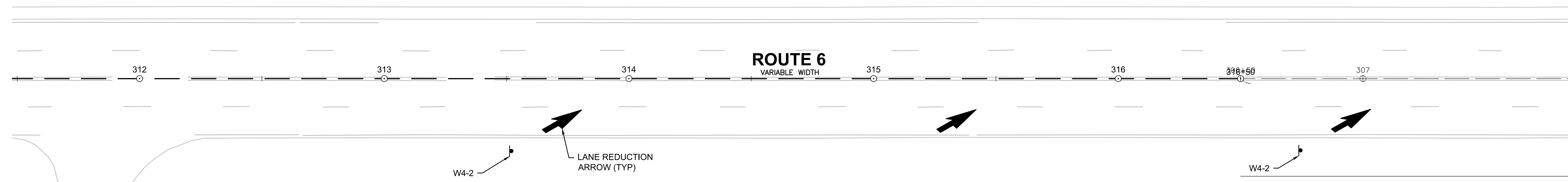
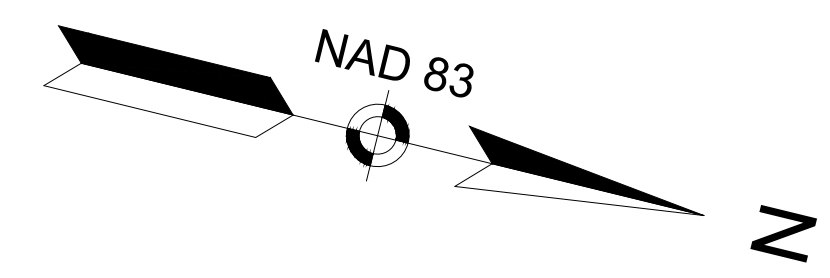
**TRAFFIC SIGNS & PAVEMENT MARKINGS
SHEET 1 OF 19**

TRAFFIC SYMBOLS

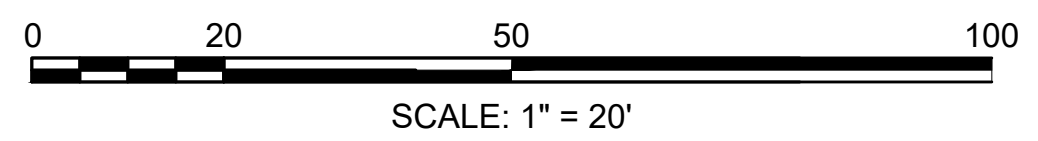
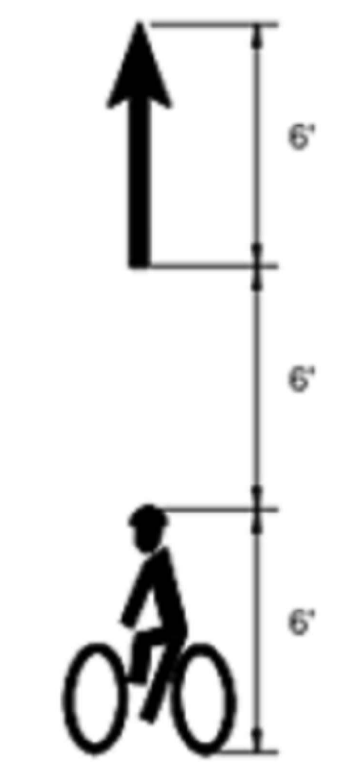
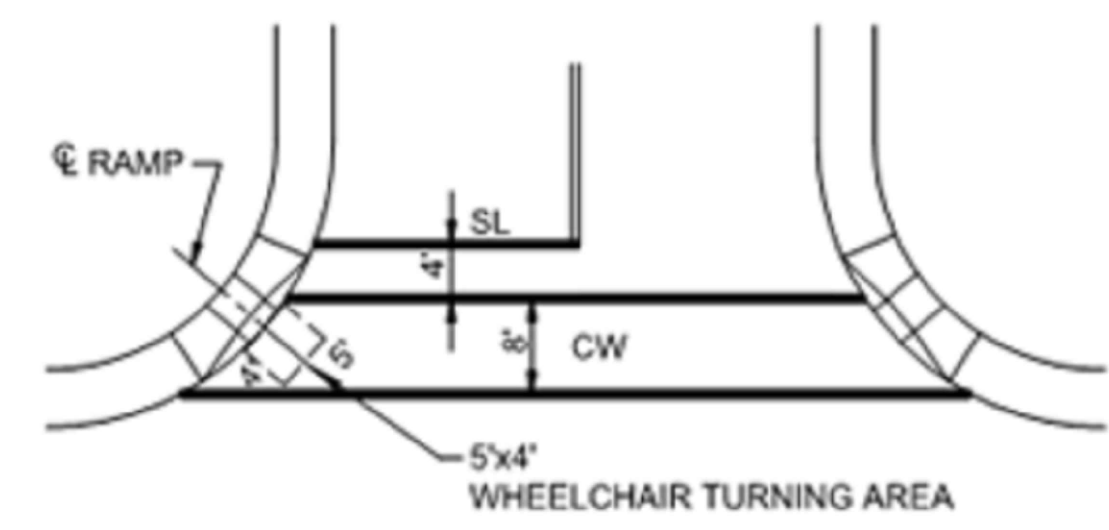
EXISTING	PROPOSED	DESCRIPTION
		WIRE LOOP DETECTOR (6' x 6' TYP UNLESS OTHERWISE SPECIFIED)
		VIDEO DETECTION CAMERA
		MICROWAVE DETECTOR
		PEDESTRIAN PUSH BUTTON, SIGN (DIRECTIONAL ARROW AS SHOWN) AND SADDLE
		EMERGENCY PREEMPTION CONFIRMATION STROBE LIGHT
		VEHICULAR SIGNAL HEAD
		VEHICULAR SIGNAL HEAD, OPTICALLY PROGRAMMED
		FLASHING BEACON
		PEDESTRIAN SIGNAL HEAD, (TYPE AS NOTED OR AS SPECIFIED)
		RAILROAD SIGNAL
		SIGNAL POST AND BASE (ALPHA-NUMERIC DESIGNATION NOTED)
		MAST ARM, SHAFT AND BASE (ARM LENGTH AS NOTED)
		HIGH MAST POLE OR TOWER
		SIGN AND POST
		SIGN AND POST (2 POSTS)
		MAST ARM WITH LUMINAIRE
		OPTICAL PRE-EMPTION DETECTOR
		CONTROL CABINET, GROUND MOUNTED
		CONTROL CABINET, POLE MOUNTED
		FLASHING BEACON CONTROL AND METER PEDESTAL
		LOAD CENTER ASSEMBLY
		PULL BOX 12"x12" (OR AS NOTED)
		ELECTRIC HANDHOLE 12"x24" (OR AS NOTED)
		TRAFFIC SIGNAL CONDUIT

PAVEMENT MARKINGS SYMBOLS

EXISTING	PROPOSED	DESCRIPTION
		PAVEMENT ARROW - WHITE
		LEGEND "ONLY" - WHITE
		STOP LINE
		CROSSWALK
		SOLID WHITE LINE
		SOLID YELLOW LINE
		BROKEN WHITE LINE
		BROKEN YELLOW LINE
		DOTTED WHITE LINE
		DOTTED YELLOW LINE
		DOTTED WHITE LINE EXTENSION
		DOTTED YELLOW LINE EXTENSION
		DOUBLE WHITE LINE
		DOUBLE YELLOW LINE



- NOTES**
1. RETAIN ALL EXISTING TS EQUIPMENT AND ALL TS CONDUIT UNLESS OTHERWISE NOTED.
 2. ALL PAVEMENT MARKINGS ON ROADWAYS SHALL BE REFLECTORIZED THERMOPLASTIC.
 3. WHERE EXISTING PAVEMENT MARKINGS ARE DIFFERENT THAN PROPOSED MARKINGS SHOWN, REMOVE BY AN APPROVED METHOD.
 4. RETAIN ALL EXISTING SIGNS UNLESS OTHERWISE NOTED.
 5. ALL MEDIAN CROSSHATCH SYCHL AT 3:1 SLOPE, SPACED 15' O.C.



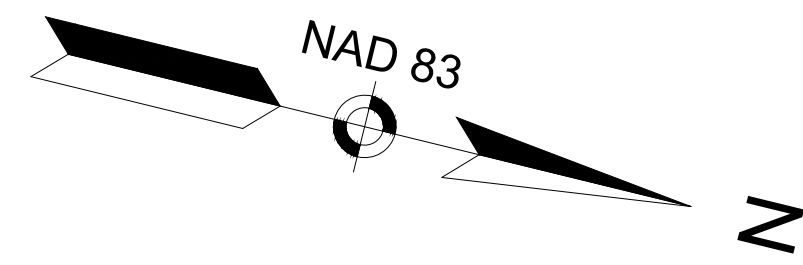
CONTINUED ON SHEET NO. 23

609098_HD(SIGNSTRIPE).DWG Plotted on: 22-May-2020 10:48 AM

WELLFLEET
ROUTE 6

STATE	FED. AID PROJ. NO.	SHEET NO.	TOTAL SHEETS
MA	XXX-XXXX (XXX)	23	45
PROJECT FILE NO.		609098	

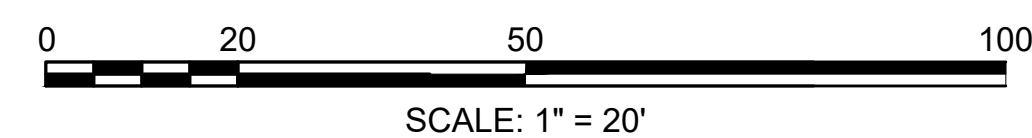
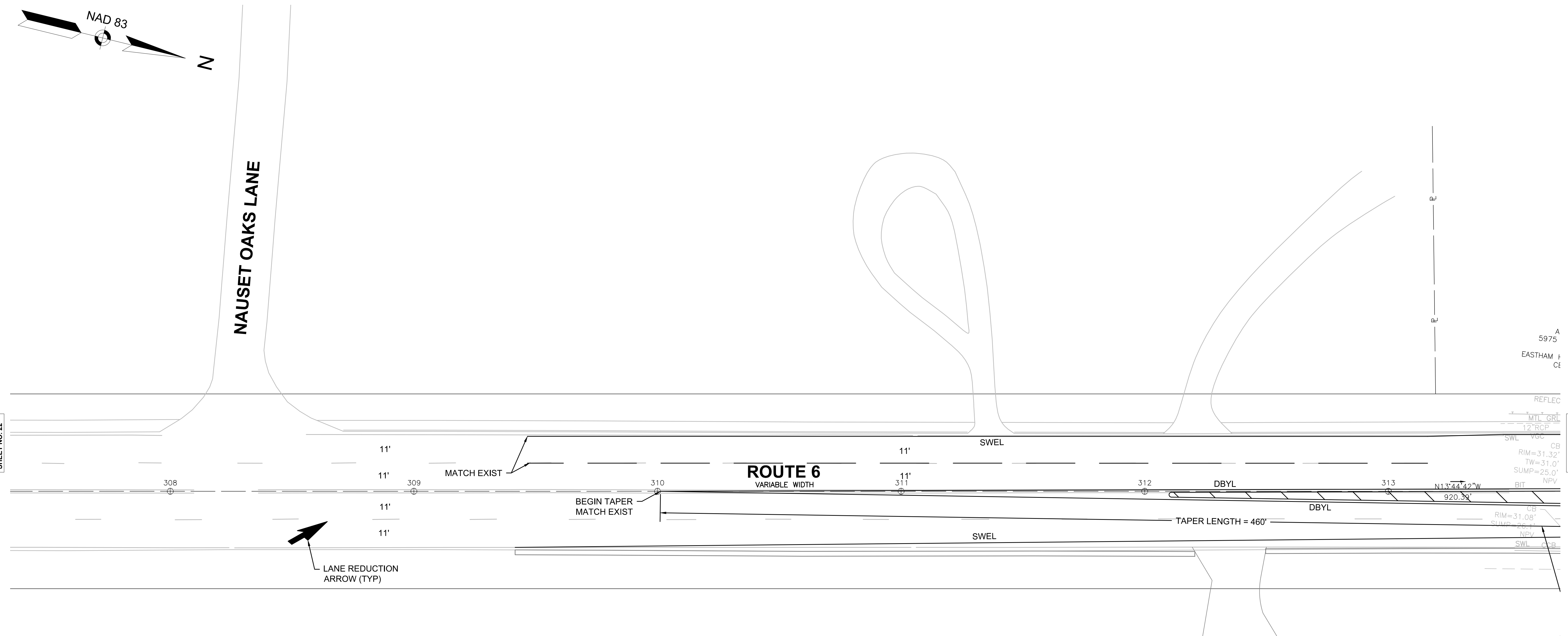
TRAFFIC SIGNS & PAVEMENT MARKINGS
SHEET 2 OF 19



NAUSET OAKS LANE

CONTINUED ON
SHEET NO. 22

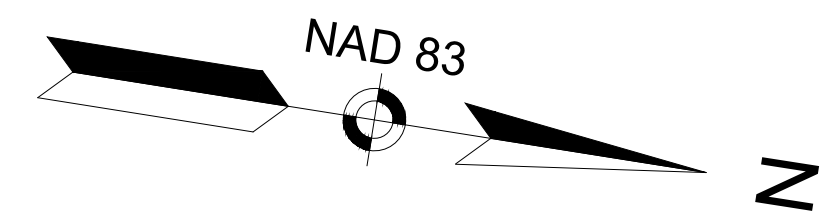
CONTINUED ON
SHEET NO. 24



WELLFLEET
ROUTE 6

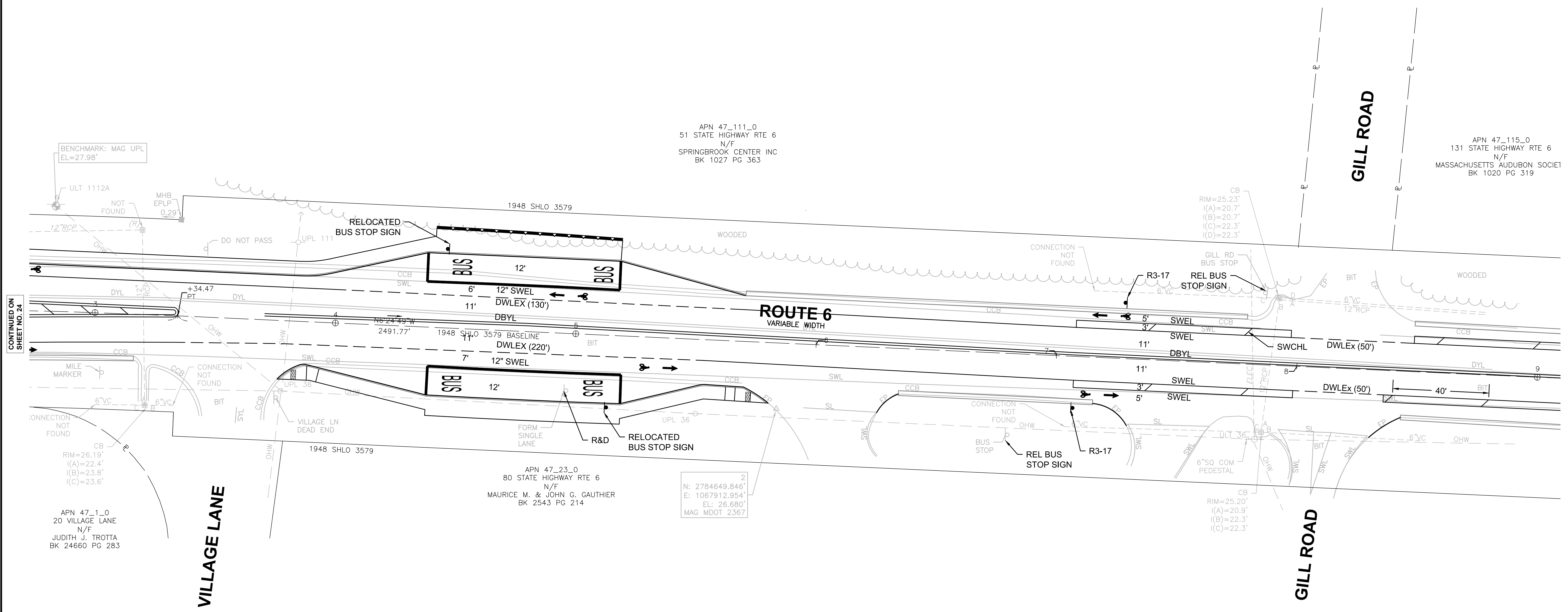
STATE	FED. AID PROJ. NO.	SHEET NO.	TOTAL SHEETS
MA	XXX-XXXX (XXX)	25	45
PROJECT FILE NO.		609098	

TRAFFIC SIGNS & PAVEMENT MARKINGS
SHEET 4 OF 19



APN 47_111_0
51 STATE HIGHWAY RTE 6
N/F
SPRINGBROOK CENTER INC
BK 1027 PG 363

APN 47_115_0
131 STATE HIGHWAY RTE 6
N/F
MASSACHUSETTS AUDUBON SOCIETY
BK 1020 PG 319

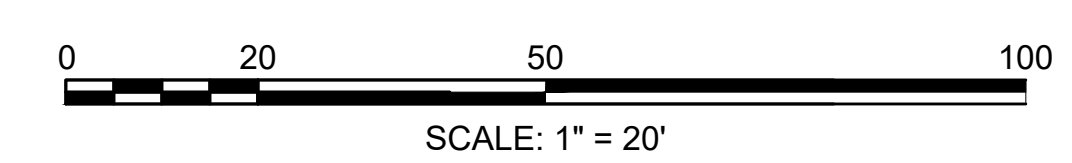


CONTINUED ON
SHEET NO. 24

APN 47_1_0
20 VILLAGE LANE
N/F
JUDITH J. TROTTA
BK 24660 PG 283

APN 47_23_0
80 STATE HIGHWAY RTE 6
N/F
MAURICE M. & JOHN G. GAUTHIER
BK 2543 PG 214

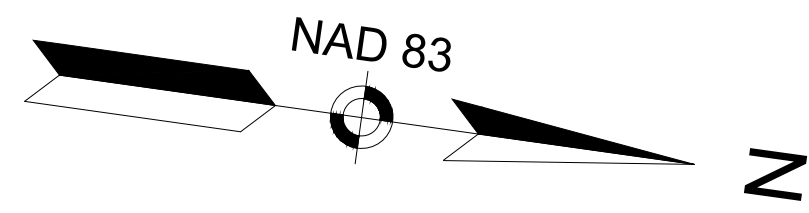
2
N: 2784649.846'
E: 1067912.954'
EL: 26.680'
MAG. MDOT 2367



**WELLFLEET
ROUTE 6**

STATE	FED. AID PROJ. NO.	SHEET NO.	TOTAL SHEETS
MA	XXX-XXXX (XXX)	26	45
PROJECT FILE NO.		609098	

**TRAFFIC SIGNS & PAVEMENT MARKINGS
SHEET 5 OF 19**

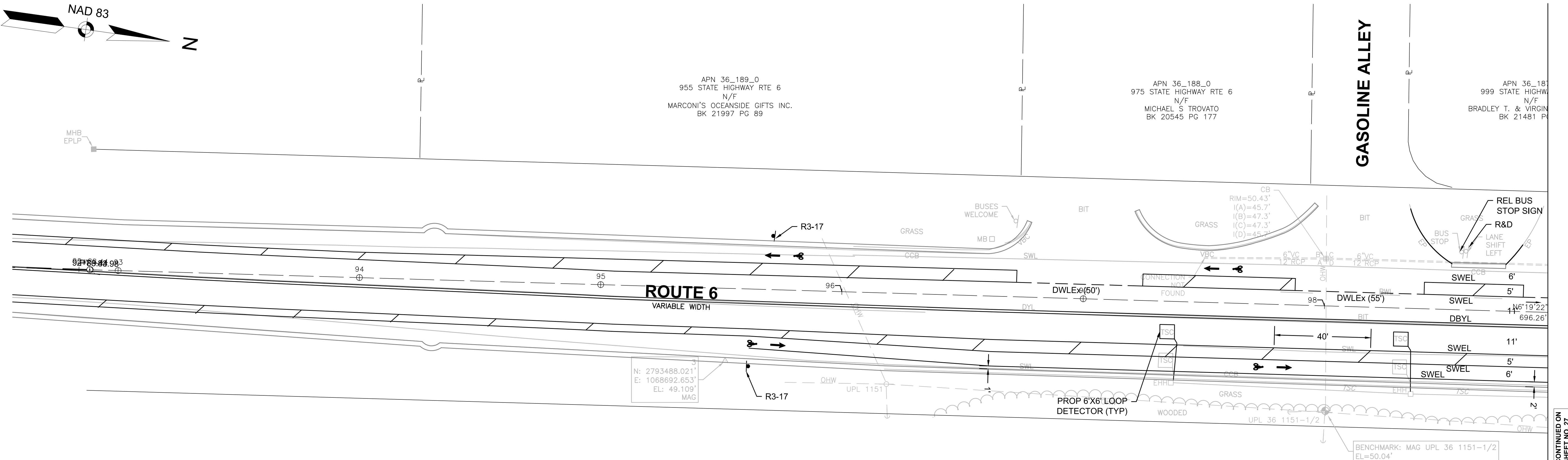


APN 36_189_0
955 STATE HIGHWAY RTE 6
N/F
MARCONI'S OCEANSIDE GIFTS INC.
BK 21997 PG 89

APN 36_188_0
975 STATE HIGHWAY RTE 6
N/F
MICHAEL S TROVATO
BK 20545 PG 177

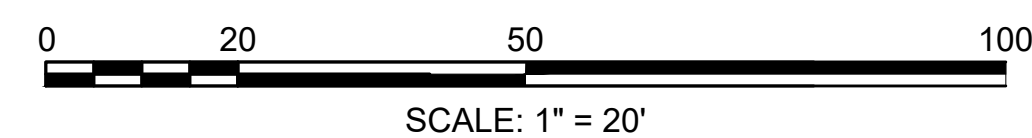
APN 36_181
999 STATE HIGHWAY
N/F
BRADLEY T. & VIRGINIA
BK 21481 PG 177

GASOLINE ALLEY



N: 2793488.021'
E: 1068692.653'
EL: 49.109'
MAG

BENCHMARK: MAG UPL 36 1151-1/2
EL=50.04'

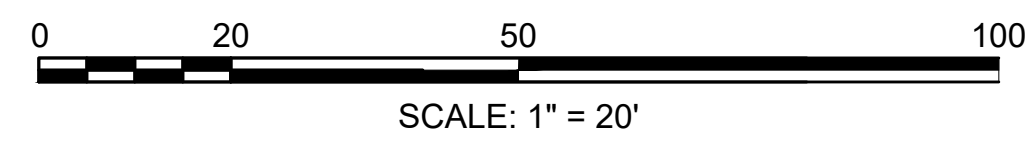
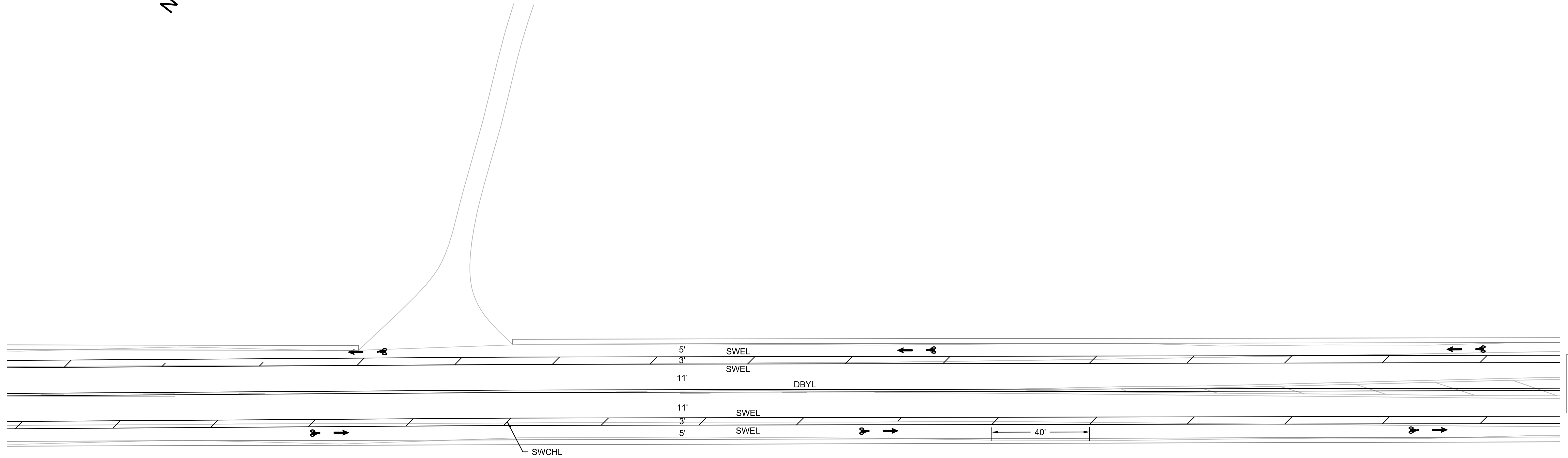
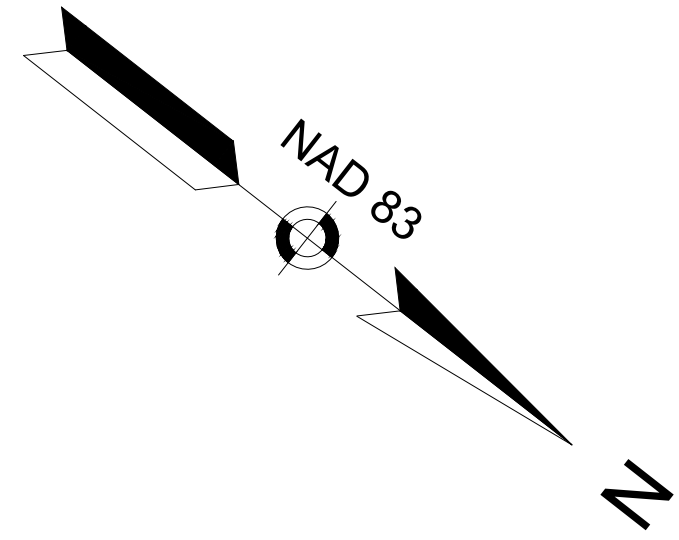


CONTINUED ON
SHEET NO. 27

WELLFLEET
ROUTE 6

STATE	FED. AID PROJ. NO.	SHEET NO.	TOTAL SHEETS
MA	XXX-XXXX (XXX)	29	45
PROJECT FILE NO.		609098	

TRAFFIC SIGNS & PAVEMENT MARKINGS
SHEET 8 OF 19

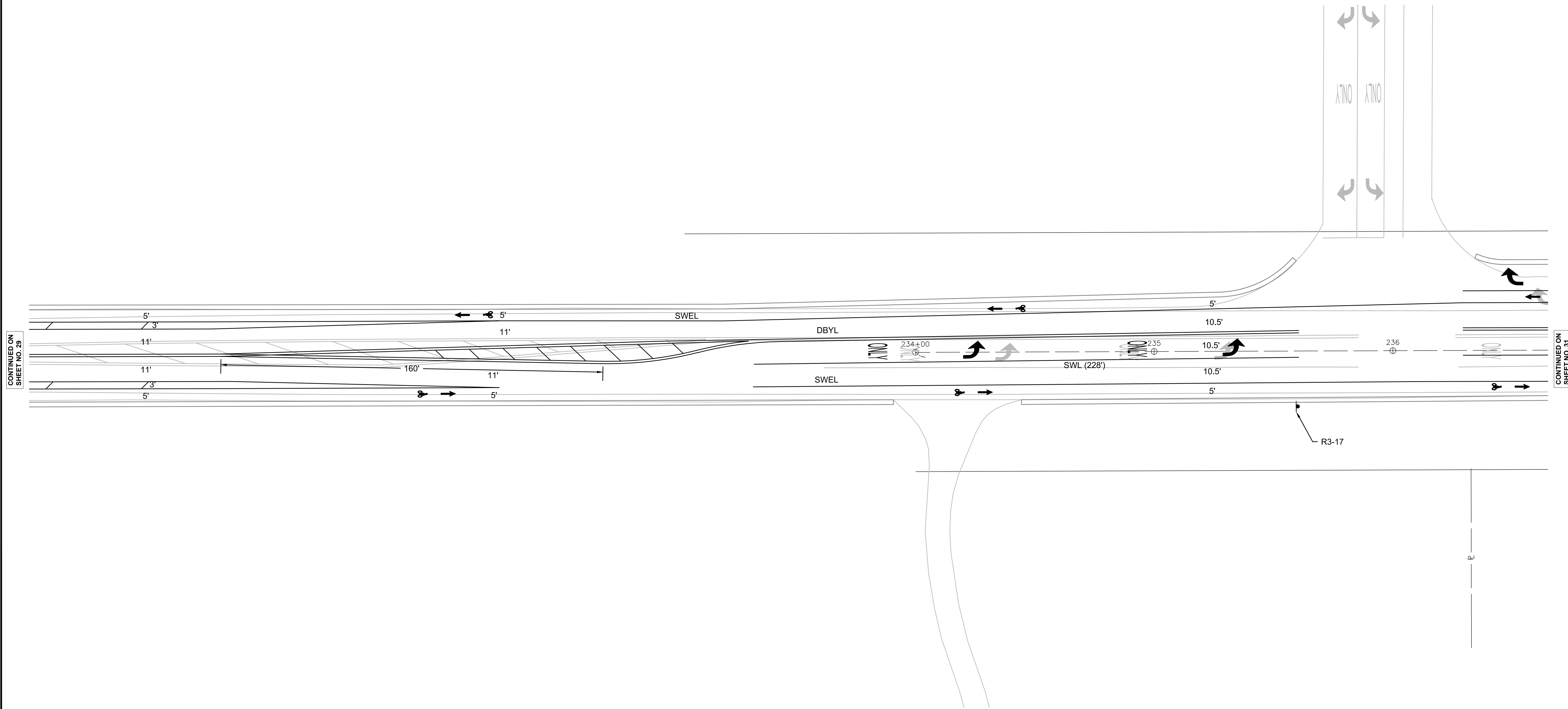
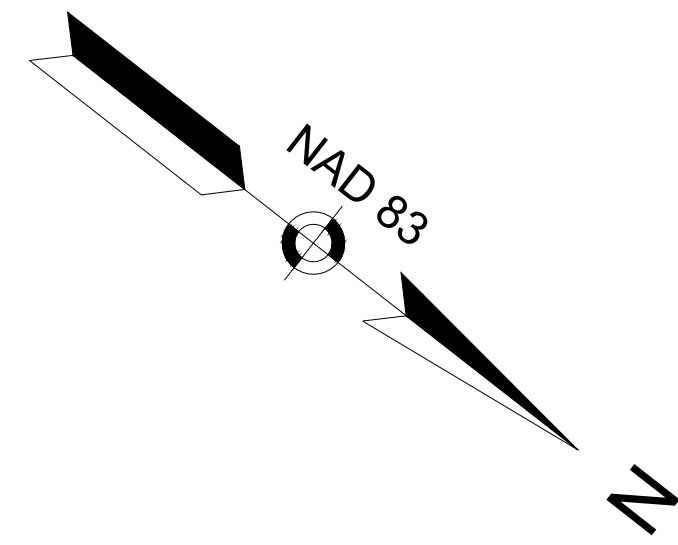


CONTINUED ON
SHEET NO. 30

WELLFLEET
ROUTE 6

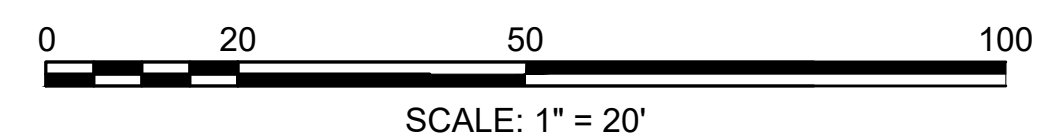
STATE	FED. AID PROJ. NO.	SHEET NO.	TOTAL SHEETS
MA	XXX-XXXX (XXX)	30	45
PROJECT FILE NO.		609098	

TRAFFIC SIGNS & PAVEMENT MARKINGS
SHEET 9 OF 19



CONTINUED ON
SHEET NO. 29

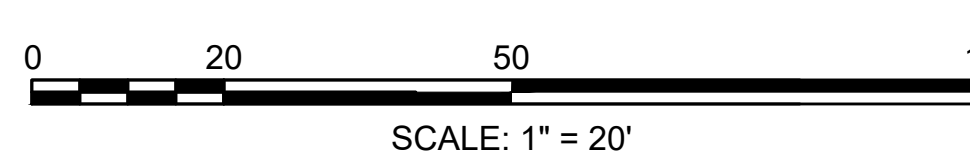
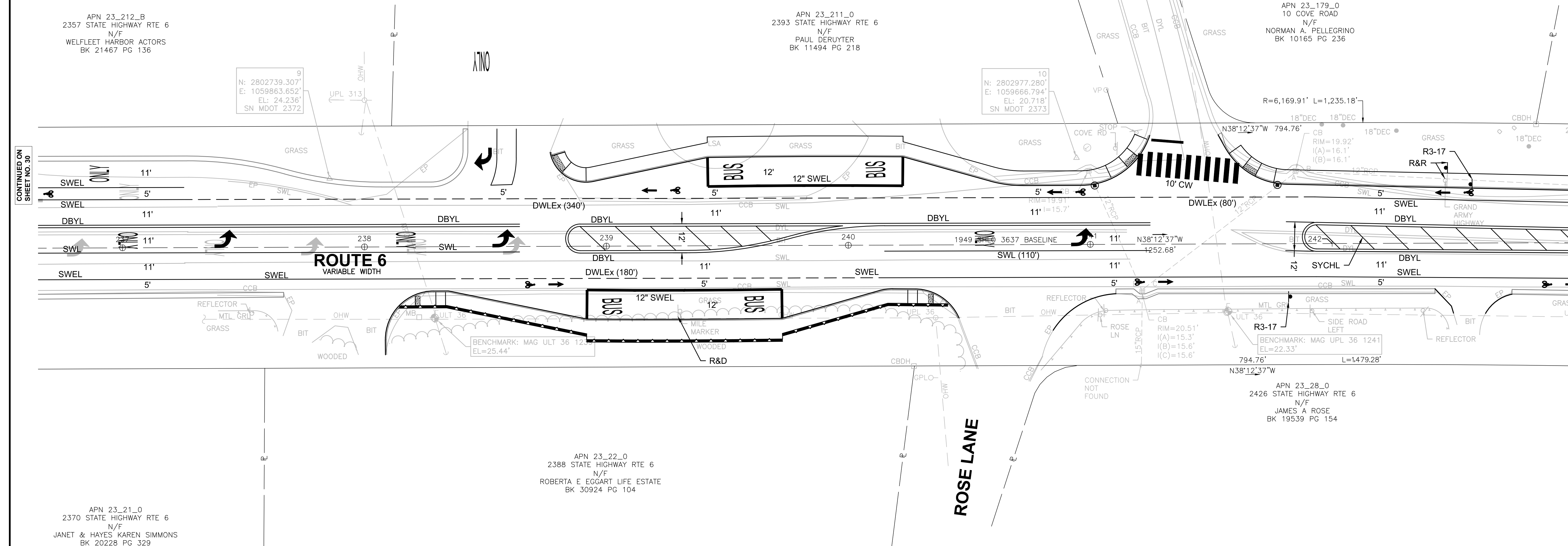
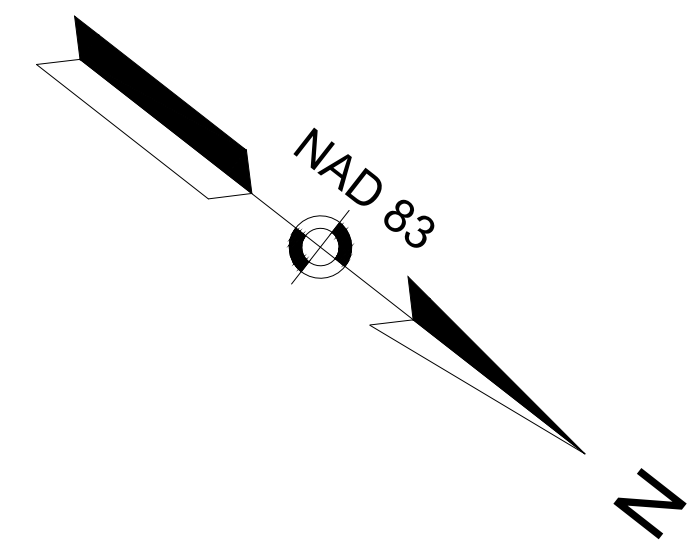
CONTINUED ON
SHEET NO. 31



WELLFLEET
ROUTE 6

STATE	FED. AID PROJ. NO.	SHEET NO.	TOTAL SHEETS
MA	XXX-XXXX (XXX)	31	45
PROJECT FILE NO.		609098	

TRAFFIC SIGNS & PAVEMENT MARKINGS
SHEET 10 OF 19



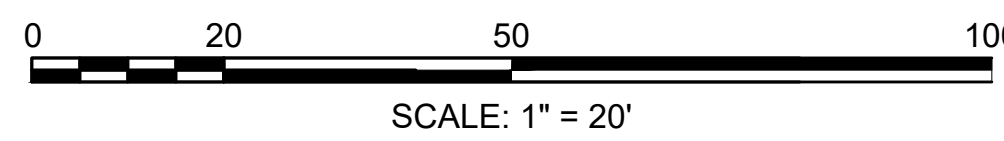
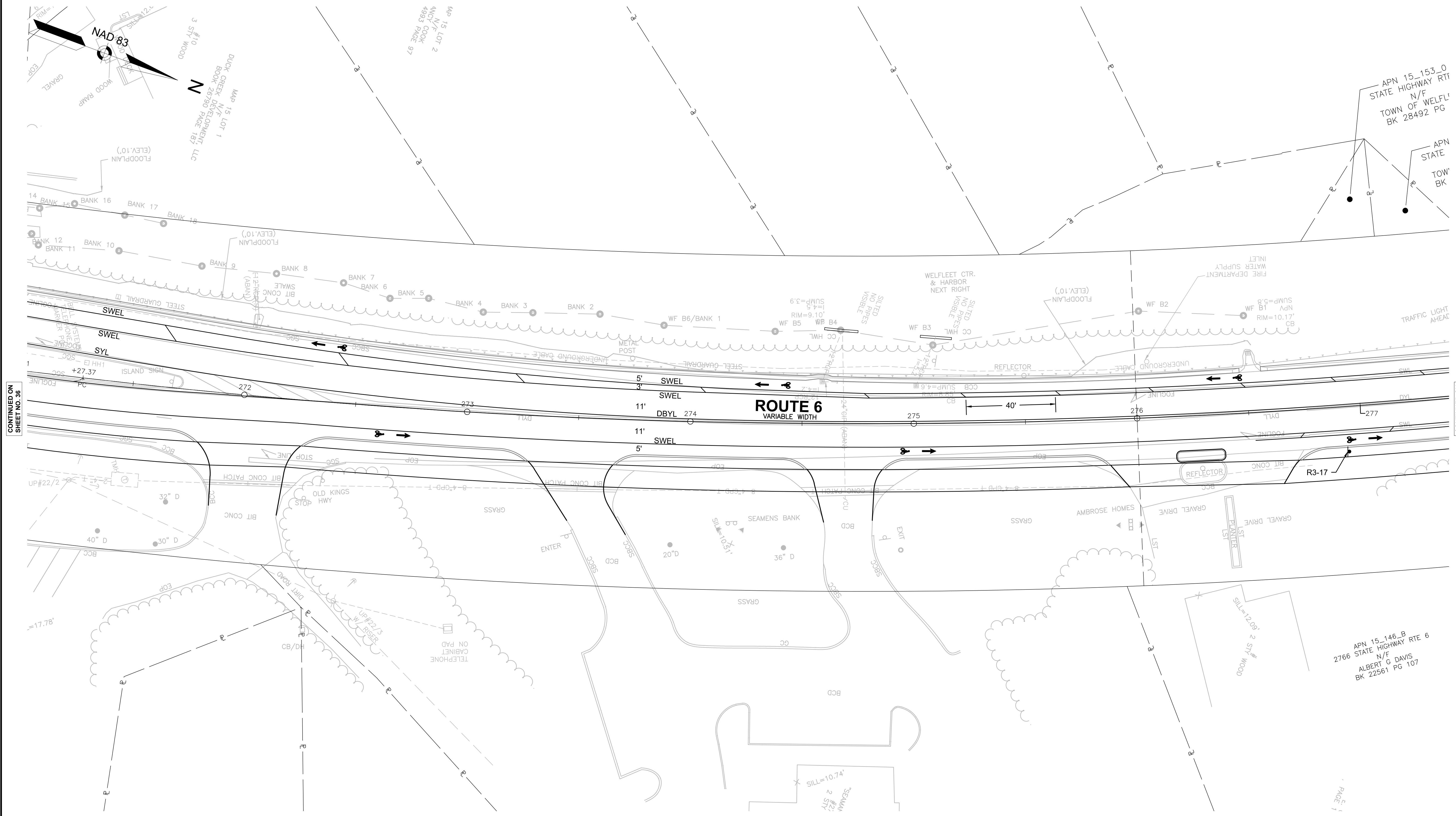
CONTINUED ON
SHEET NO. 30

CONTINUED ON
SHEET NO. 32

**WELLFLEET
ROUTE 6**

STATE	FED. AID PROJ. NO.	SHEET NO.	TOTAL SHEETS
MA	XXX-XXXX (XXX)	37	45
PROJECT FILE NO.		609098	

**TRAFFIC SIGNS & PAVEMENT MARKINGS
SHEET 16 OF 19**



CONTINUED ON
SHEET NO. 36

CONTINUED ON
SHEET NO. 38

APN 15_146_B
STATE HIGHWAY RTE 6
N/F
ALBERT G DAVIS
BK 22561 PG 107

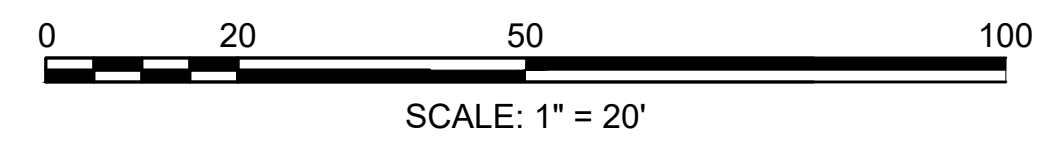
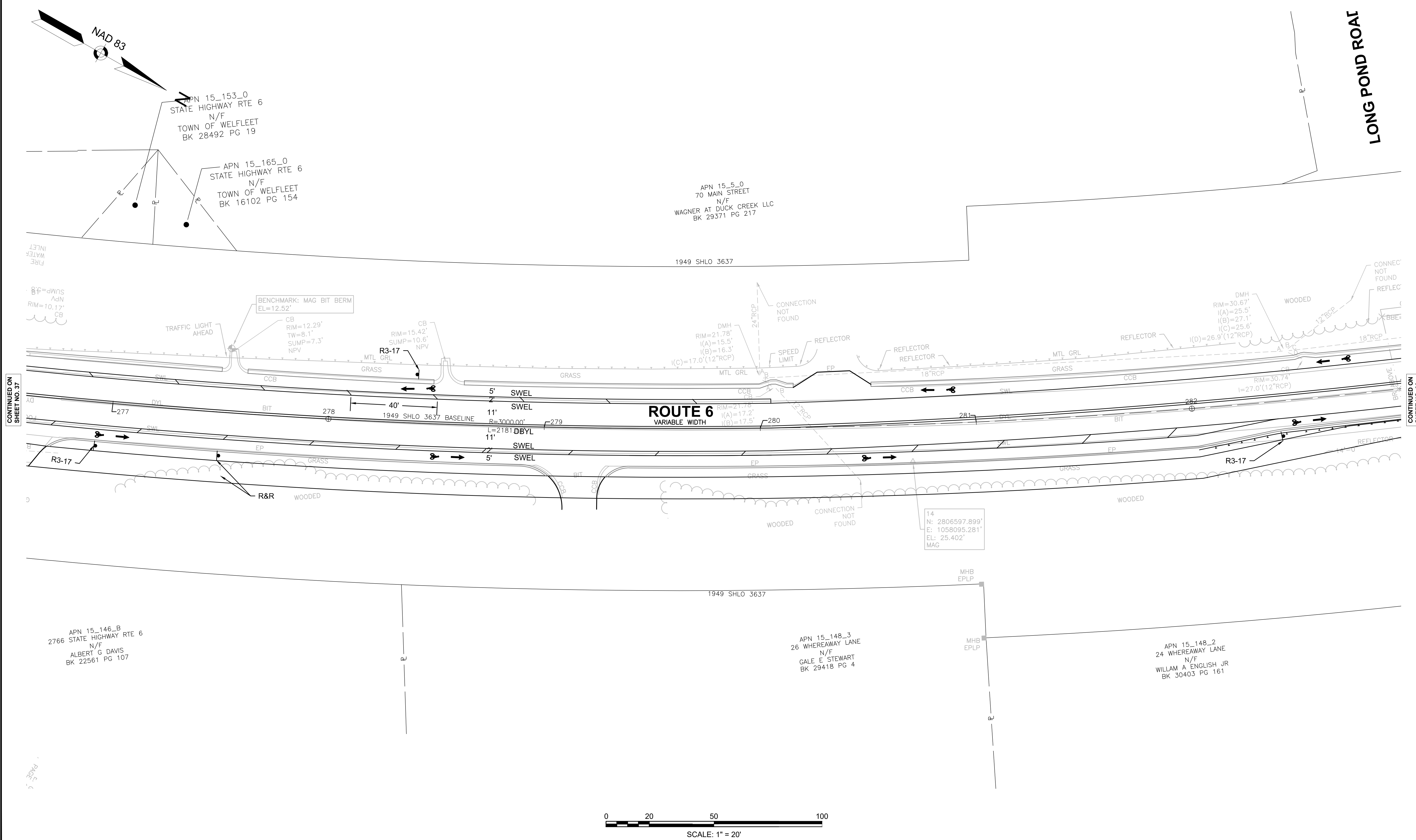
· PAGE 1

**WELFLEET
ROUTE 6**

STATE	FED. AID PROJ. NO.	SHEET NO.	TOTAL SHEETS
MA	XXX-XXXX (XXX)	38	45
PROJECT FILE NO.		609098	

**TRAFFIC SIGNS & PAVEMENT MARKINGS
SHEET 17 OF 19**

609098_HD(SIGNSTRIPE).DWG Picked on: 22-May-2020 10:50 AM



CONTINUED ON
SHEET NO. 37

CONTINUED ON
SHEET NO. 39

**WELFLEET
ROUTE 6**

STATE	FED. AID PROJ. NO.	SHEET NO.	TOTAL SHEETS
MA	XXX-XXXX (XXX)	39	45
PROJECT FILE NO.		609098	

**TRAFFIC SIGNS & PAVEMENT MARKINGS
SHEET 18 OF 19**

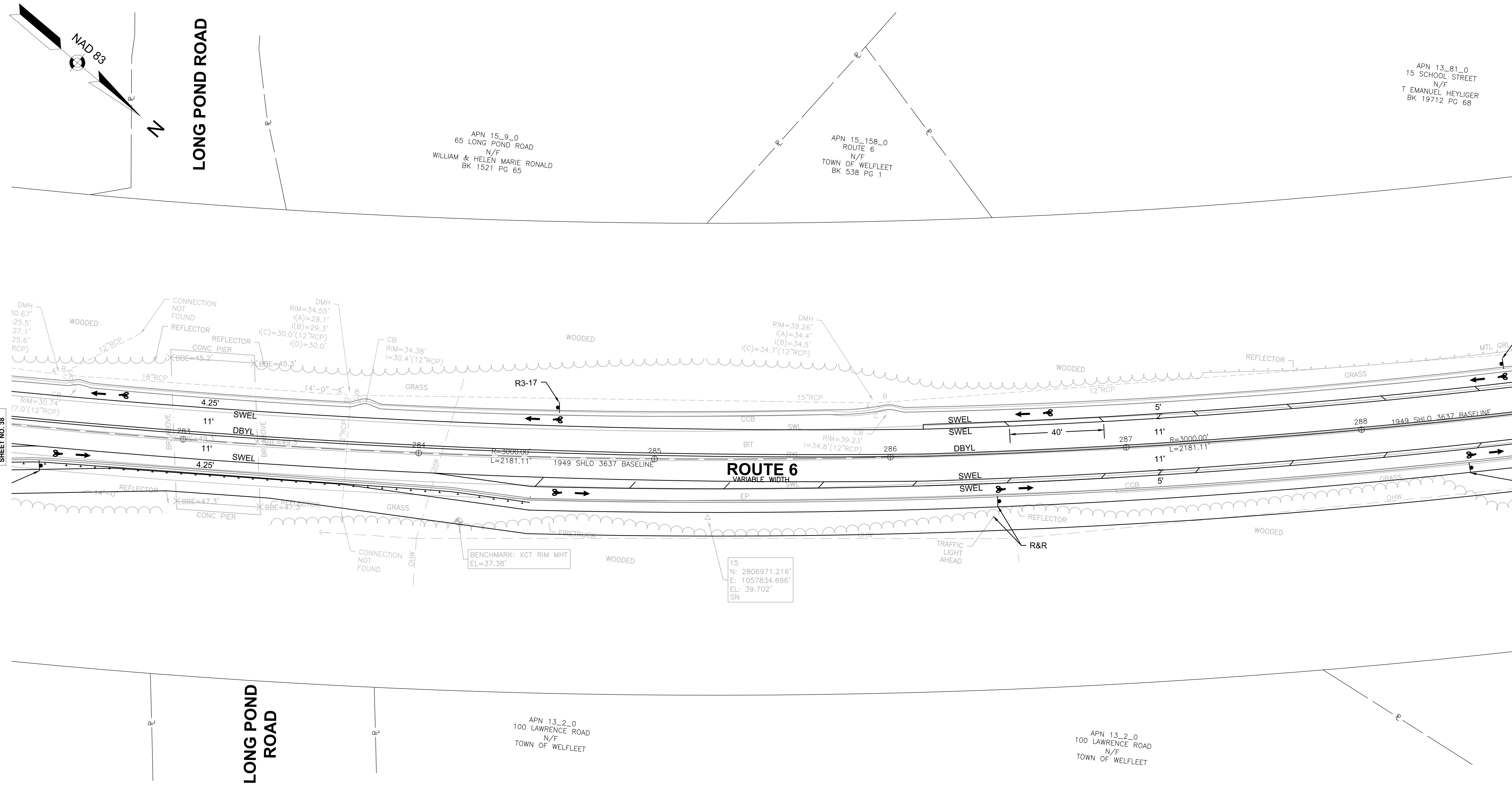
APN 13_81_0
15 SCHOOL STREET
N/F
T EMANUEL HEYLIGER
BK 19712 PG 68

APN 15_9_0
65 LONG POND ROAD
N/F
WILLIAM & HELEN MARIE RONALD
BK 1521 PG 65

APN 15_158_0
ROUTE 6
N/F
TOWN OF WELFLEET
BK 538 PG 1

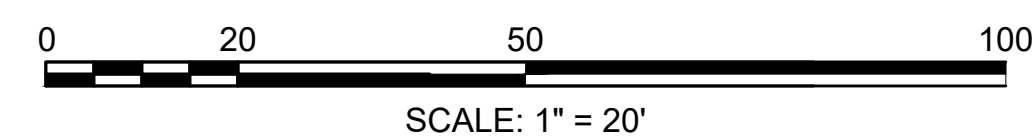
APN 13_2_0
100 LAWRENCE ROAD
N/F
TOWN OF WELFLEET

APN 13_2_0
100 LAWRENCE ROAD
N/F
TOWN OF WELFLEET



CONTINUED ON
SHEET NO. 38

CONTINUED ON
SHEET NO. 40

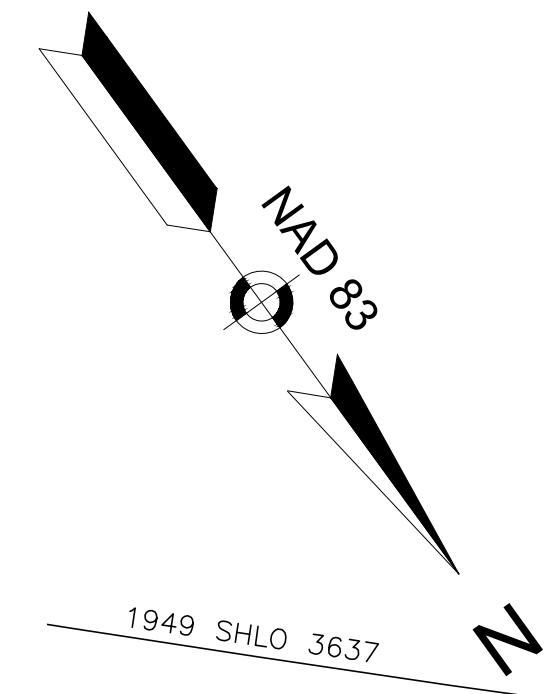


**WELLFLEET
ROUTE 6**

STATE	FED. AID PROJ. NO.	SHEET NO.	TOTAL SHEETS
MA	XXX-XXXX (XXX)	40	45
PROJECT FILE NO.		609098	

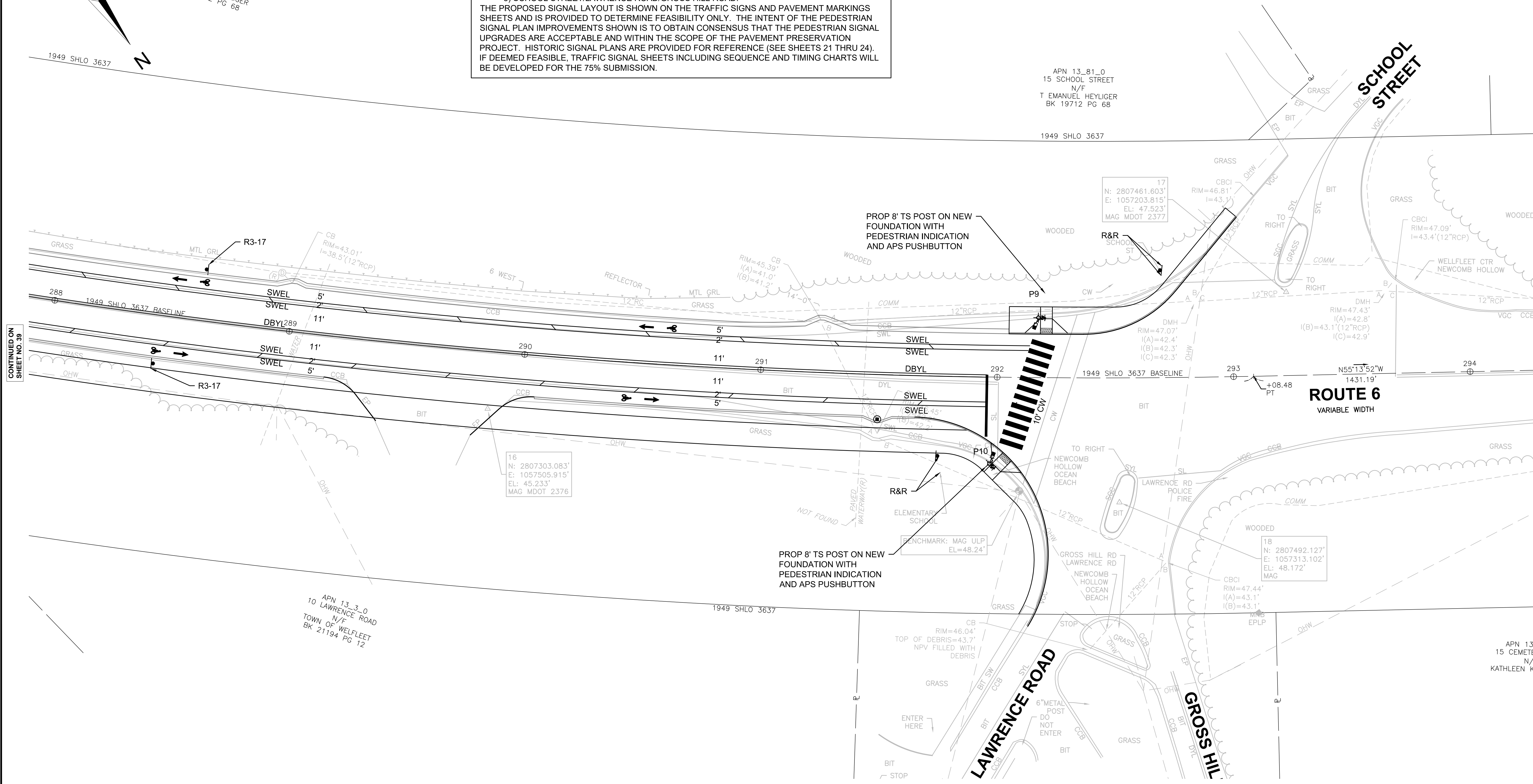
**TRAFFIC SIGNS & PAVEMENT MARKINGS
SHEET 19 OF 19**

THE PROJECT ONLY PROPOSES MINOR UPGRADES/CHANGES TO THE PEDESTRIAN SIGNALIZATION AT THE FOLLOWING INTERSECTIONS WITH ROUTE 6:
 1) MARCONI BEACH ROAD,
 2) MAIN STREET AND
 3) SCHOOL STREET/LAWRENCE ROAD/GROSS HILL ROAD.
 THE PROPOSED SIGNAL LAYOUT IS SHOWN ON THE TRAFFIC SIGNS AND PAVEMENT MARKINGS SHEETS AND IS PROVIDED TO DETERMINE FEASIBILITY ONLY. THE INTENT OF THE PEDESTRIAN SIGNAL PLAN IMPROVEMENTS SHOWN IS TO OBTAIN CONSENSUS THAT THE PEDESTRIAN SIGNAL UPGRADES ARE ACCEPTABLE AND WITHIN THE SCOPE OF THE PAVEMENT PRESERVATION PROJECT. HISTORIC SIGNAL PLANS ARE PROVIDED FOR REFERENCE (SEE SHEETS 21 THRU 24). IF DEEMED FEASIBLE, TRAFFIC SIGNAL SHEETS INCLUDING SEQUENCE AND TIMING CHARTS WILL BE DEVELOPED FOR THE 75% SUBMISSION.



APN 13_81_0
15 SCHOOL STREET
N/F
T EMANUEL HEYLIGER
BK 19712 PG 68

APN 13_81_0
15 SCHOOL STREET
N/F
T EMANUEL HEYLIGER
BK 19712 PG 68



CONTINUED ON
SHEET NO. 39

APN 13_3_0
TO LAWRENCE ROAD
N/F
TOWN OF WELLFLEET
BK 21194 PG 12

APN 13
15 CEMETE
N/
KATHLEEN K

