

# MASSACHUSETTS DEPARTMENT OF TRANSPORTATION HIGHWAY DIVISION

## RUMBLE STRIP INSTALLATION

### ROUTE 6

### VARIOUS LOCATIONS

IN THE TOWN OF

### WELLFLEET

### BANSTABLE COUNTY

FEDERAL AID PROJECT NO.

WELLFLEET - ROUTE 6

STATE	FED. AID PROJ. NO.	SHEET NO.	TOTAL SHEETS
MA	-	1	7
PROJECT FILE NO.		XXXXXX	

TITLE SHEET

SHEET NO.	DESCRIPTION
1	TITLE SHEET
2	KEY PLAN & DETAILS
3	EASTHAM TOWN LINE TO CASTAGNA DRIVE
4	LIEUTENANT ISLAND ROAD TO SEASIDE LIQUORS
5	MARCONI BEACH ROAD TO OLD COUNTY ROAD
6	CAHOON HOLLOW ROAD TO GULL POND ROAD
7	LAWRENCE ROAD TO OLD TRURO ROAD

#### INDEX

PROJECT END  
STA. 354+43.00  
N 2812550.6806  
E 1055780.7721



PROJECT LOCATION

PROJECT BEGIN  
STA. 2+25.00  
N 2784289.4922  
E 1067927.7805



LENGTH OF PROJECT = 35,135.50 FEET = 6.654 MILES

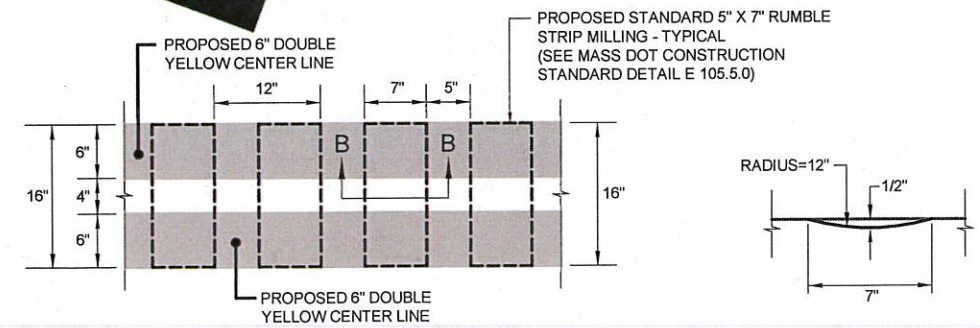
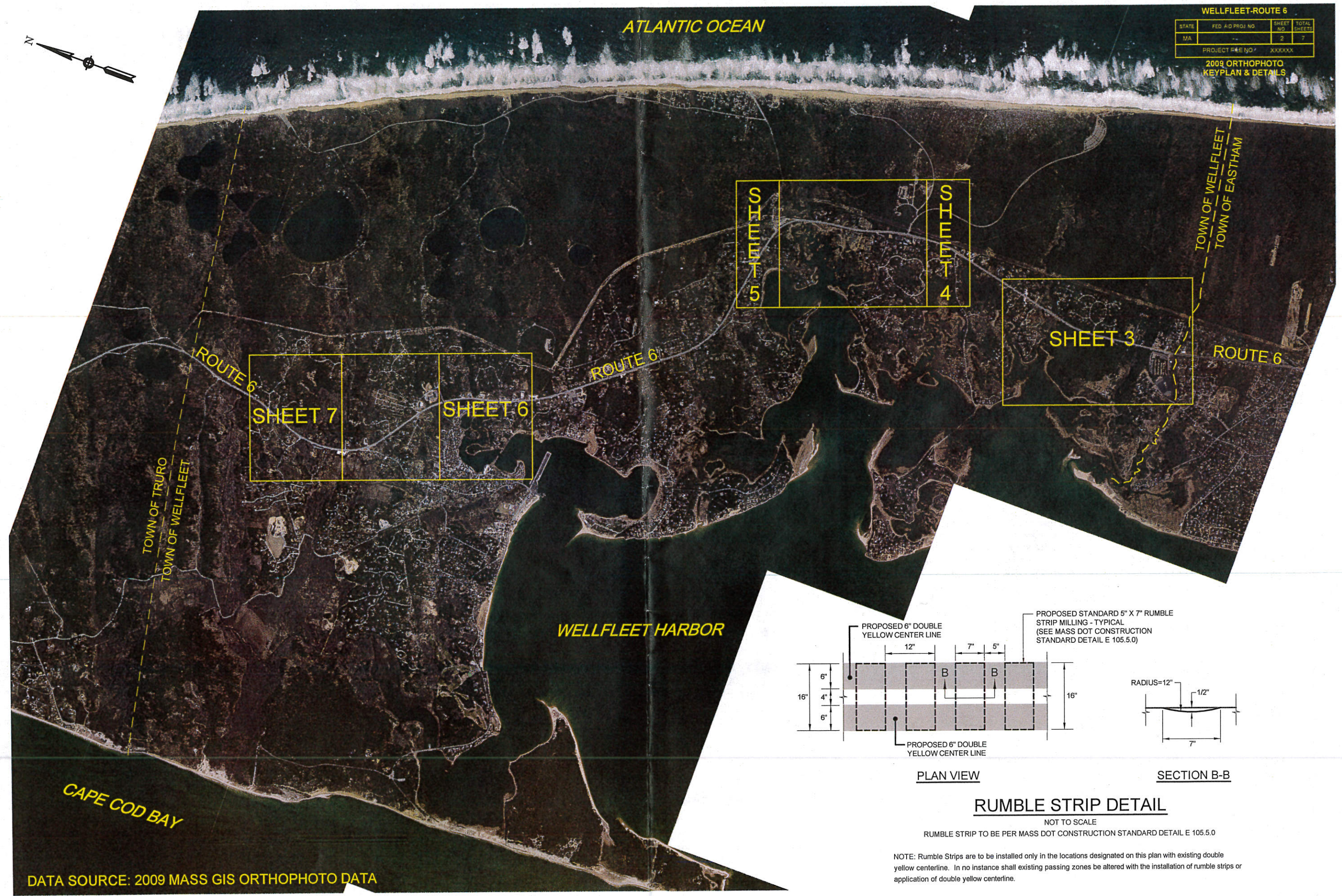
DATE	DESCRIPTION	REV #

(ERASE IF NOT APPLICABLE) PE Stamp & Signature Consultant Name		
	RECOMMENDED FOR APPROVAL	
DEPARTMENT OF TRANSPORTATION FEDERAL HIGHWAY ADMINISTRATION APPROVED:	CHIEF ENGINEER _____ DATE _____	APPROVED HIGHWAY ADMINISTRATOR _____ DATE _____
DIVISION ADMINISTRATOR _____ DATE _____	DATE _____	DATE _____



WELLFLEET-ROUTE 6			
STATE	FED. AID PROJ. NO.	SHEET NO.	TOTAL SHEETS
MA		2	7
PROJECT #EE 1307 XXXXXX			

2009 ORTHOPHOTO  
KEYPLAN & DETAILS



PLAN VIEW

SECTION B-B

**RUMBLE STRIP DETAIL**

NOT TO SCALE  
RUMBLE STRIP TO BE PER MASS DOT CONSTRUCTION STANDARD DETAIL E 105.5.0

NOTE: Rumble Strips are to be installed only in the locations designated on this plan with existing double yellow centerline. In no instance shall existing passing zones be altered with the installation of rumble strips or application of double yellow centerline.

DATA SOURCE: 2009 MASS GIS ORTHOPHOTO DATA

DATA SOURCE: 2009 MASS GIS ORTHOPHOTO DATA

WELLFLEET-ROUTE 6

STATE	FED. AID PROJ. NO.	SHEET NO.	TOTAL SHEETS
MA		3	7
PROJECT FILE NO. XXXXXX			

2009 ORTHOPHOTO  
EASTHAM TOWN LINE TO CASTAGNA DR.



RUMBLE STRIP SEGMENT	STARTING STATION	ENDING STATION	SEGMENT LENGTH
RS-1	2+25±	3+28±	103'
RS-2	4+00±	5+75±	175'
RS-3	8+45±	13+70±	525'
RS-4	17+35±	21+00±	365'
RS-5	22+58±	27+47±	489'
RS-6	28+57±	42+64±	1407'
RS-7	83+44±	95+00±	1156'
RS-8	105+64±	110+00±	436'
RS-9	135+60±	145+52±	992'
RS-10	146+77±	157+40±	1063'
RS-11	275+10±	289+17±	1407'
RS-12	290+00±	291+56±	156'
RS-13	294+00±	304+00±	1000'
RS-14	304+84±	312+54±	770'
RS-15	314+27±	319+45±	518'
RS-16	321+62±	326+20±	358'
RS-17	326+14±	327+64±	150'
RS-18	328+61±	332+18±	357'
RS-19	333+39±	336+00±	261'
RS-20	337+61±	351+00±	1299'
RS-21	353+00±	354+43±	143'



WELLFLEET-ROUTE 6

STATE	FED. AID PROJ. NO.	SHEET NO.	TOTAL SHEETS
MA		4	7
PROJECT FILE NO.		XXXXXX	

2009 ORTHOPHOTO  
LIEUTENANT ISLAND RD.  
TO SEASIDE LIQUORS



RUMBLE STRIP SEGMENT	STARTING STATION	ENDING STATION	SEGMENT LENGTH
RS-1	2+25±	3+28±	103'
RS-2	4+00±	5+75±	175'
RS-3	8+45±	13+70±	525'
RS-4	17+35±	21+00±	365'
RS-5	22+58±	27+47±	489'
RS-6	28+57±	42+64±	1407'
RS-7	83+44±	95+00±	1156'
RS-8	105+64±	110+00±	436'
RS-9	135+60±	145+52±	992'
RS-10	146+77±	157+40±	1063'
RS-11	275+10±	289+17±	1407'
RS-12	290+00±	291+46±	156'
RS-13	294+00±	304+00±	1000'
RS-14	304+84±	312+54±	770'
RS-15	314+27±	319+45±	518'
RS-16	321+69±	325+20±	358'
RS-17	326+14±	327+64±	150'
RS-18	326+81±	332+18±	357'
RS-19	333+39±	336+00±	261'
RS-20	337+61±	351+00±	1299'
RS-21	353+00±	354+43±	143'

DRUMMER COVE

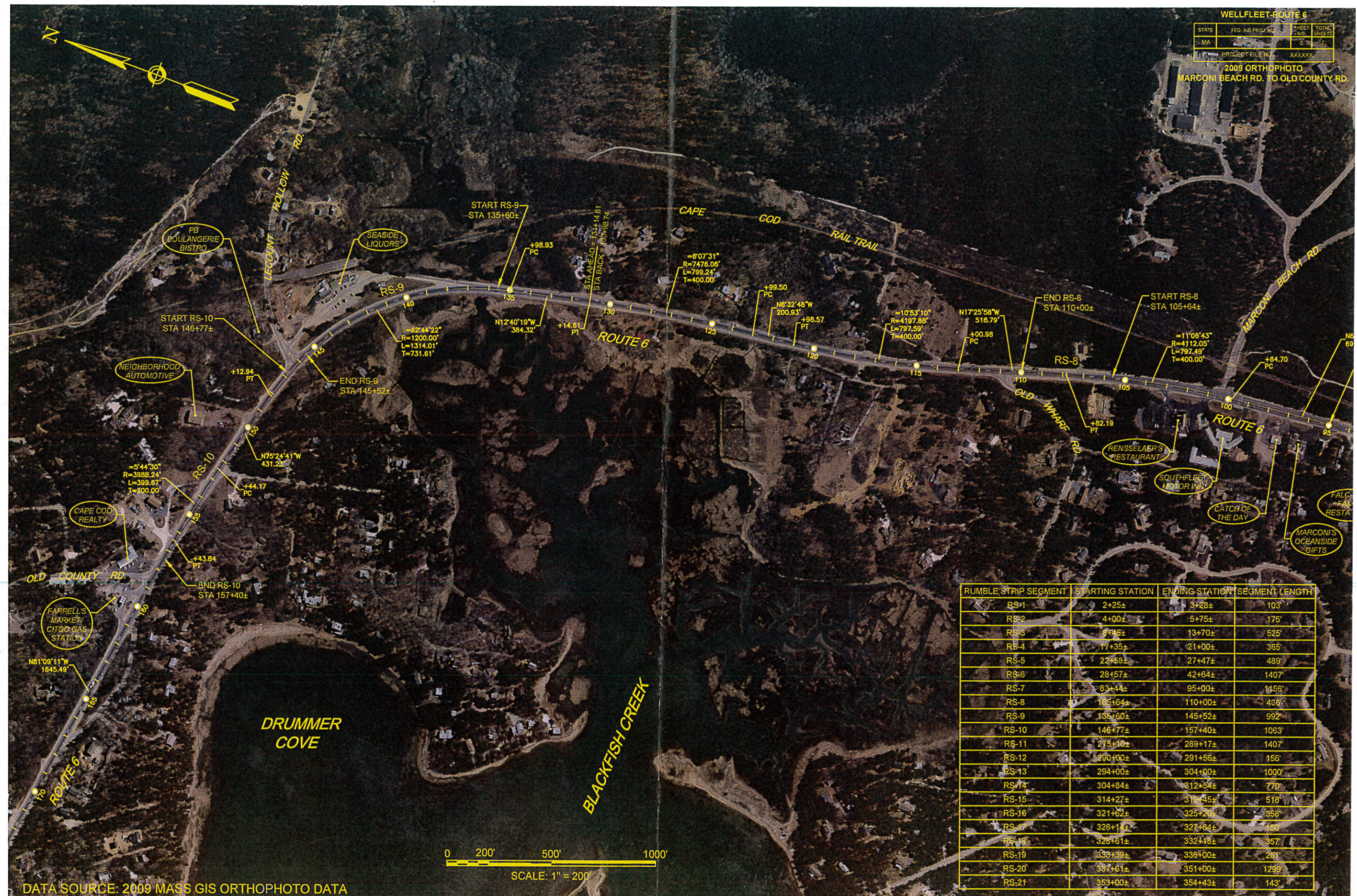
BLACKFISH CREEK



DATA SOURCE: 2009 MASS GIS ORTHOPHOTO DATA

WELLFLEET ROUTE 6			
STATE	FED AID PROJ NO.	SHEET NO.	TOTAL SHEETS
MA		5	7
PROJECT FILE NO. XXXXXX			

2009 ORTHOPHOTO  
MARCONI BEACH RD. TO OLD COUNTY RD.



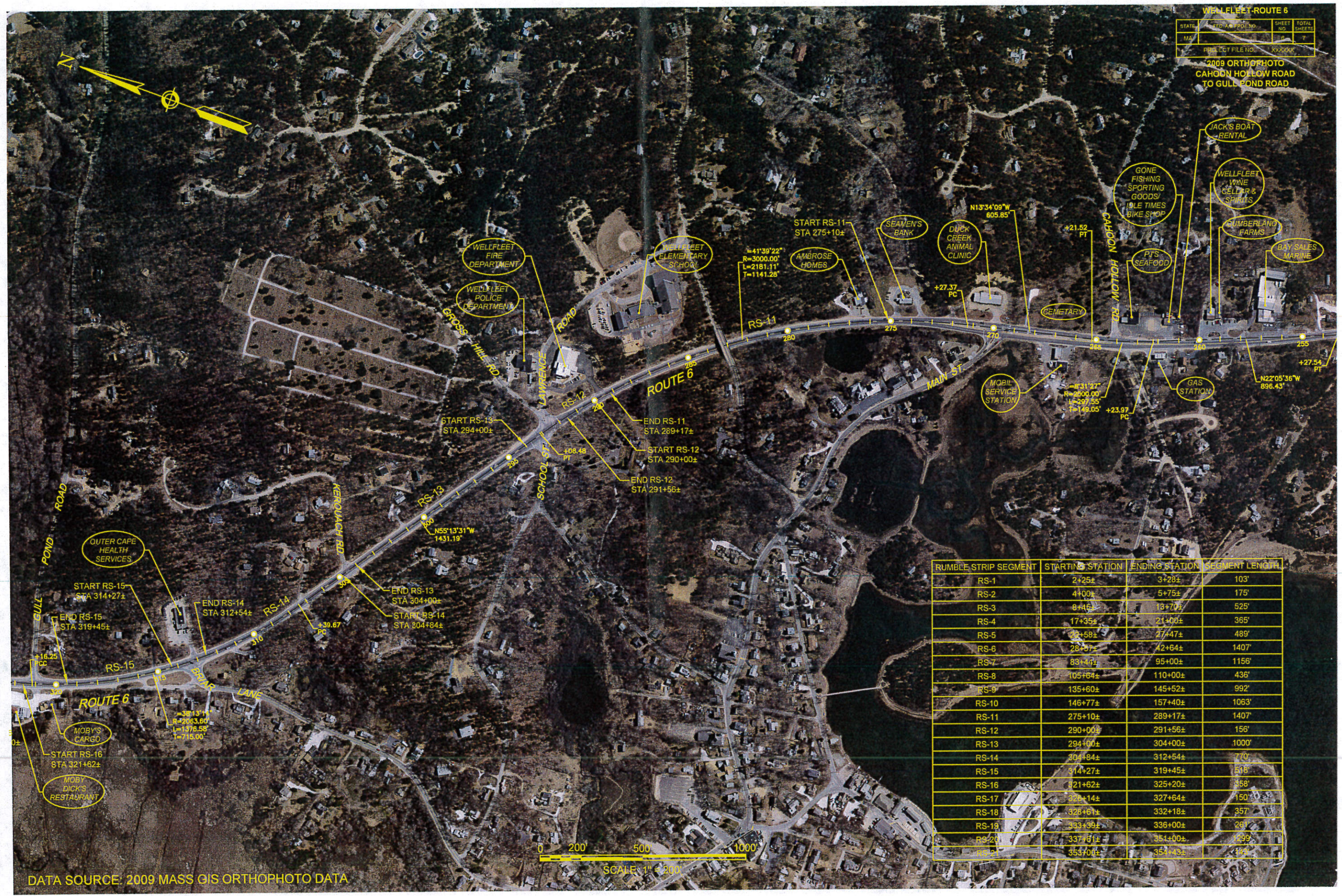
RUMBLE STRIP SEGMENT	STARTING STATION	ENDING STATION	SEGMENT LENGTH
RS-1	2+25±	3+28±	103'
RS-2	4+00±	5+75±	175'
RS-3	8+85±	13+70±	525'
RS-4	17+35±	21+00±	365'
RS-5	22+58±	27+47±	489'
RS-6	28+57±	42+64±	1407'
RS-7	83+44±	95+00±	1156'
RS-8	105+64±	110+00±	436'
RS-9	135+60±	145+52±	992'
RS-10	146+77±	157+40±	1063'
RS-11	275+10±	289+17±	1407'
RS-12	290+00±	291+56±	156'
RS-13	294+00±	304+00±	1000'
RS-14	304+84±	312+54±	770'
RS-15	314+27±	318+45±	518'
RS-16	321+62±	325+21±	358'
RS-17	326+14±	327+64±	150'
RS-18	328+61±	332+16±	357'
RS-19	333+39±	336+00±	261'
RS-20	337+61±	351+00±	1299'
RS-21	353+00±	354+43±	143'



DATA SOURCE: 2009 MASS GIS ORTHOPHOTO DATA

WELLFLEET-ROUTE 6			
STATE	PROJECT NO.	SHEET NO.	TOTAL SHEETS
MA	605.85	6	7
PROJECT FILE NO. YAX000			

2009 ORTHOPHOTO  
CAHOON HOLLOW ROAD  
TO GULL POND ROAD



RUMBLE STRIP SEGMENT	STARTING STATION	ENDING STATION	SEGMENT LENGTH
RS-1	2+25±	3+28±	103'
RS-2	4+00±	5+75±	175'
RS-3	8+45±	13+70±	525'
RS-4	17+35±	21+00±	365'
RS-5	23+58±	27+47±	489'
RS-6	28+57±	42+64±	1407'
RS-7	83+44±	95+00±	1156'
RS-8	105+64±	110+00±	436'
RS-9	135+60±	145+52±	992'
RS-10	146+77±	157+40±	1063'
RS-11	275+10±	289+17±	1407'
RS-12	290+00±	291+56±	156'
RS-13	294+00±	304+00±	1000'
RS-14	304+84±	312+54±	770'
RS-15	314+27±	319+45±	518'
RS-16	321+62±	325+20±	358'
RS-17	326+14±	327+64±	150'
RS-18	328+61±	332+18±	357'
RS-19	333+39±	336+00±	261'
RS-20	337+61±	351+00±	1329'
RS-21	353+00±	354+43±	143'

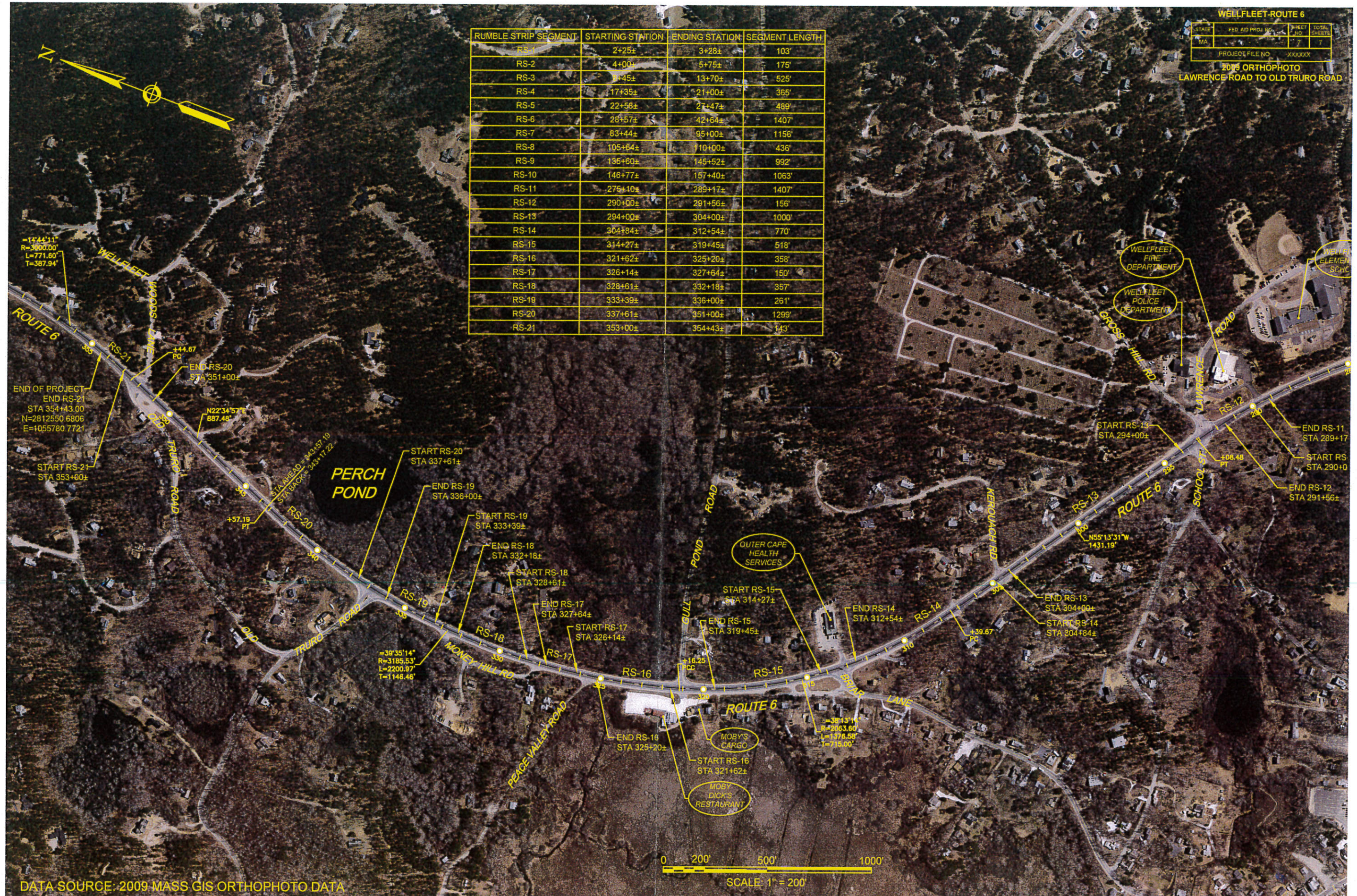
DATA SOURCE: 2009 MASS GIS ORTHOPHOTO DATA

WELLFLEET-ROUTE 6

STATE	FED. AID PROJ. NO.	SHEET NO.	TOTAL SHEETS
MA		7	7
PROJECT FILE NO. XXXXXX			

2015 ORTHOPHOTO  
LAWRENCE ROAD TO OLD TRURO ROAD

RUMBLE STRIP SEGMENT	STARTING STATION	ENDING STATION	SEGMENT LENGTH
RS-1	2+25±	3+28±	103'
RS-2	4+00±	5+75±	175'
RS-3	7+45±	13+70±	525'
RS-4	17+35±	21+00±	365'
RS-5	22+58±	27+47±	489'
RS-6	28+57±	42+64±	1407'
RS-7	83+44±	95+00±	1156'
RS-8	105+64±	110+00±	436'
RS-9	136+60±	145+52±	992'
RS-10	146+77±	157+40±	1063'
RS-11	275+10±	289+17±	1407'
RS-12	290+00±	291+56±	156'
RS-13	294+00±	304+00±	1000'
RS-14	304+84±	312+54±	770'
RS-15	314+27±	319+45±	518'
RS-16	321+62±	325+20±	358'
RS-17	326+14±	327+64±	150'
RS-18	328+61±	332+18±	357'
RS-19	333+39±	336+00±	261'
RS-20	337+61±	351+00±	1299'
RS-21	353+00±	354+43±	143'



DATA SOURCE: 2009 MASS GIS ORTHOPHOTO DATA