

Wellfleet Shellfish Advisory Board
Hybrid Meeting Zoom/Wellfleet Adult Community Center
Thursday February 15, 2024; 6PM

In conformity with the provisions of Chapter 30A, Massachusetts General Laws, and Ch. 2 of the Acts of 2023, Notice is hereby filed that a meeting of the

Shellfish Advisory Board will be held on Thursday February 15, 2024; 6PM

Said meeting will be open to the public and the press both virtually, as required by the provisions

of the Open Meeting Law, and in person at the Wellfleet Adult Community Center

To virtually attend through Zoom Video Conferencing instructions to join are given below. If you

have technical difficulties, please contact the Chair of Committee at the following:

email_Media.Services.2@wellfleet-ma.gov

Join Zoom Meeting:

<https://zoom.us/j/94214261094?pwd=NW5FbVFCUTZZVzZaUlidyjNMZ1lYZz09>

Meeting ID : 942 1426 1094

Passcode: 136251

Dial in by your local number: +1 929 205 6099 US (New York)

Agenda:

- Announcements and Public Comment
- Review Minutes
- Town Ice Machine
- Discussion re: Conservation Commission review of Chipman's Cove access, draft letter to Conservation Commission
- Letter from Finance Committee
- Review/discuss Town Counsel's legal determination regarding Shellfish Department reorganization process (continued from last meeting)
- Shellfish Department FY25 Budget
- Shellfish Department FY25 Capital Improvement Plan
- Shellfish Revolving Fund
- Future Topics

Shellfish Advisory Board Meeting
January 26th, 2024 11AM
Town Hall Basement Conference Room

Board Members in attendance: Rebecca Taylor (Chair), Brad Morse (Vice Chair), Nick Sirucek (secretary), Adrien Kmiec, Stephen Pickard, Ethan Estey, John Duane (via Zoom), Chris Merl

Regrets: Damien Parkington

Announcements & Public Comment

- R. Taylor commented about meeting procedure and adherence to the SAB's charge
- N. Sirucek commented about board adherence to Open Meeting Law and Town Code of Conduct, raised concerns about violations
- A. Kmiec commented about the Wellfleet Oyster Alliance meeting he attended
- H. Wilson made comments about Town Counsel opinion, materials, and minutes
- D. Brunt commented on overwintering agreements, revolving fund
- N. Civetta commented on overwintering agreements, revolving fund
- S. Pickard commented on overwintering agreement needing review, materials being posted to website
- N. Sirucek commented about issues with posting TC opinion publicly, noted that it was provided to all board members

Approve Meeting Minutes

- Amendments were made to previous meeting minutes, motion to approve by S. Pickard, 2nd'd by B. Morse, revised minutes approved 7-0

(N. Sirucek made motion to suspend the rules and take up the Ice Machine agenda item first, motion approved)

Town Ice Machine

- N. Sirucek suggested writing a letter to Select Board and Town Administration encouraging action on moving forward with the Ice Machine proposal
- J. Duane commented on the time sensitive nature of the proposal, concerns about the Town having a purchasing agent
- S. Pickard spoke of state funding and the availability of outside funding (WOA) for the project
- B. Morse informed the board that he talked to the current TA and spoke with Alfred Pickard from WOA, was waiting to get more information
- H. Wilson commented on the availability of a procurement officer, suggested that if SAB appoints a subcommittee on this item that they take notes to provide to SAB
- N. Civetta spoke to possible locations for the machine, infrastructure issues (water, power, traffic, staffing/maintenance)
- N. Sirucek read the text of a letter to send to the BOS and Town Administration and made a motion to send it. Motion 2nd'd by J. Duane, motion passed 7-0
- R. Taylor spoke of designating a SAB subcommittee to get more information on the Ice

Machine project

- N. Sirucek made motion “to designate Stephen Pickard and Brad Morse as a subcommittee to gather and document more information regarding the Town Ice Machine, and report back to the board.”, motion 2nd'd by E. Estey, motion passed 7-0
- Further discussion of Ice Machine, continued to next meeting

Review/discuss Town Counsel's legal determination regarding Shellfish Department reorganization process

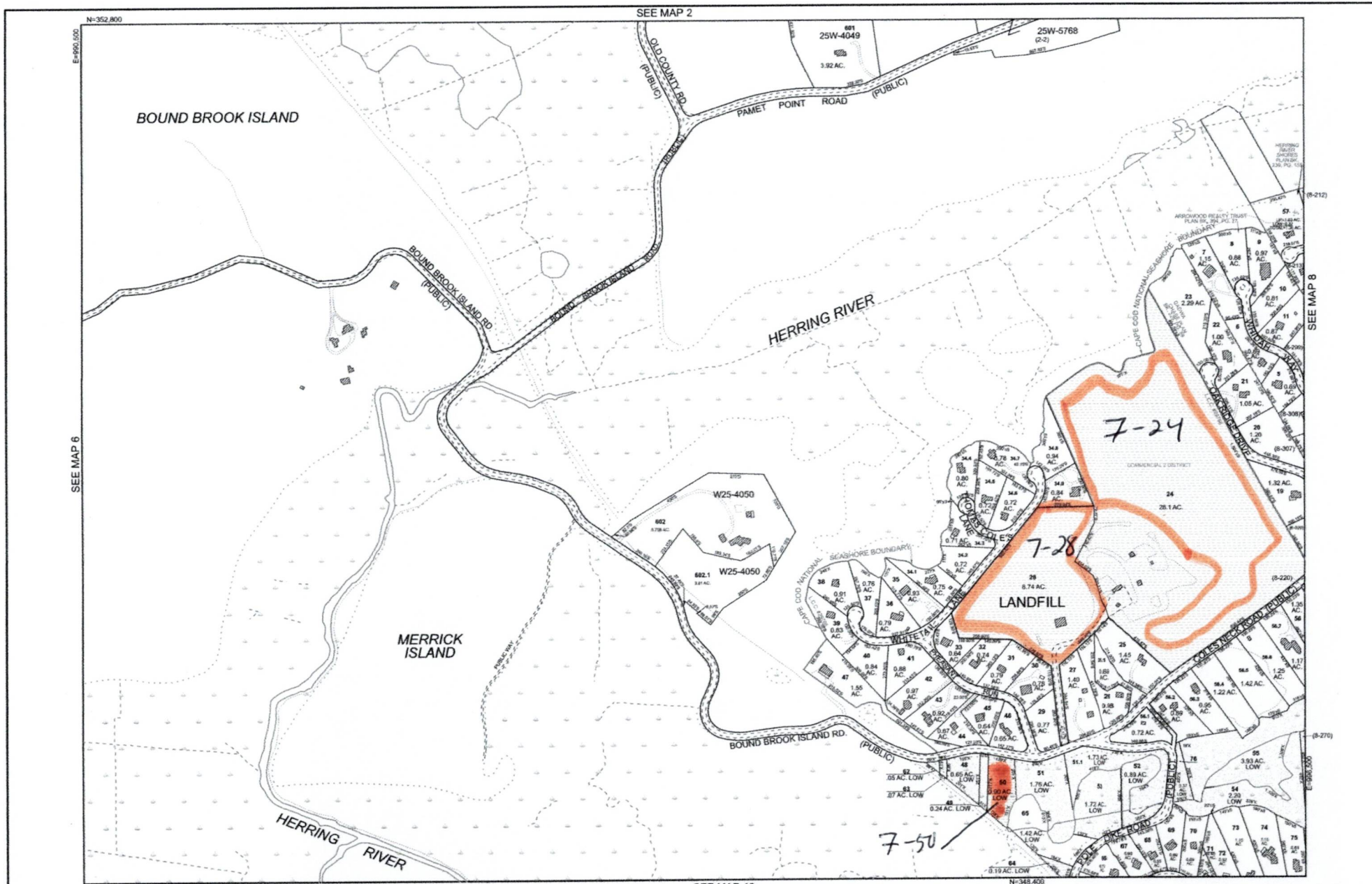
- Board discussion re: how the legal opinion was obtained and given to the board
- Board members spoke of how/why it was obtained, the Select Board not yet voting to release it, it's status as a public document, legal issues
- Public comments: D. Brunt commented on approval of ¾ position, K. Bacon commented that TC opinion wasn't public information, H. Wilson commented that it shouldn't have been released, J. Ahern commented on the budget and position
- N. Sirucek made motion to end debate on this agenda item, motion passed 7-0
- S. Pickard made motion “to have Town Counsel opinion on next meeting agenda once released by the Select Board”, motion passed 7-0

Shellfish Department FY2025 Budget

- H. Wilson suggested the board draft a letter to the Town Administration that we get copied on everything shellfish related
- N. Civetta commented that she can have the Capital Improvement Plan and Revolving Fund information for the next SAB meeting
- A. Kmiec noted that last year SAB received the budget late
- N. Civetta spoke about the budget and the process of hiring a new deputy shellfish constable, noted that the position didn't need a 2 ½ override, spoke about the Shellfish Revolving Fund and how that money is used and the spending limits set
- B. Morse asked about money in the SRF and how it's used
- N. Civetta commented that SRF funds are only used for propagation-related expenses, and that the funds do not go back to the town if unused
- H. Wilson spoke to why the SRF was established and it's purpose
- N. Civetta commented that she will bring more information about SRF to a future SAB meeting
- S. Pickard made motion “to table the budget discussion until the next meeting when we expect to have the Capital Improvement plan and Shellfish Revolving Fund”, 2nd'd J. Duane, approved 7-0

Future Topics

- Board discussed possible future topics including continued Shellfish Budget/Capital Improvement/Revolving Fund, Conservation Commission review re: Chipman's Access, Town Counsel Opinion, Ice Machine updates, Horseshoe crabs, Letter to Select Board and TA, overwintering form, Power's Landing erosion and parking lot upgrade
- Next meeting date set for February 15th 6pm



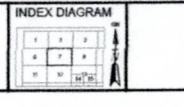
THIS MAP IS FOR ASSESSMENT PURPOSES. IT IS NOT VALID FOR LEGAL DESCRIPTION OR CONVEYANCE.
 THE HORIZONTAL DATUM IS THE MASSACHUSETTS STATE PLANE COORDINATE SYSTEM AND IS COMPILED AND DRAWN BY GLADIE ASSOCIATES, INC. REGISTERED LAND SURVEYORS ROUTE 6 @ PINE POINT ROAD, WELLFLEET, MA 02587
 COMPLETION DATE: JANUARY 1, 1993

REVISED & REPRINTED BY
CAI Technologies
Professional Mapping, Geospatial Solutions
 11 Pleasant Street, Orange, MA 01887
 800.333.4541 - www.caitech.com

LEGEND	
AREA	AC
INCLINED DIMENSION	100 FT
SCALE'D DIMENSION	100 FT
SURVEY'D DIMENSION	100 FT
WETLAND	100 FT
RIGHT OF WAY/ACCESS	CA
COMMON OWNERSHIP	CA
WETLANDS	CA

SCALE: 1" = 200'
 METERS
 0 25 50 100 150
 REVISION TO: JANUARY 1, 2019

PROPERTY MAPS
WELLFLEET
 MASSACHUSETTS



MAP NO.
7



THIS MAP IS FOR ASSESSMENT PURPOSES. IT IS NOT MAILED FOR LEGAL DESCRIPTION OR CONVEYANCE.
 THE HORIZONTAL DATUM IS THE MASSACHUSETTS STATE PLANE COORDINATE SYSTEM, NAD 83.
 COMPILED AND DRAWN BY SLADE ASSOCIATES, INC. REGISTERED LAND SURVEYORS ROUTE 6 @ PINE POINT ROAD, WELLSFLEET, MA 02587
 COMPLETION DATE: JANUARY 1, 2018

REVISED & REPRINTED BY
CAI Technologies
 Precision Mapping. Decisions Simplified.
 51 Pleasant Street, Littleton, MA 02561
 800.322.4540 • www.cai-tech.com

LEGEND

AREA - AC	HIGH OF SURFACE/CEILING	100'
RECORDS JUNCTION	COMMON ORIGINSHIP	100X
SHADES COMPLETION	WETLANDS	300S
SURVEYED COMPLETION		
WATER		

SCALE: 1" = 200'

FEET: 0 100 200 300 400 500

METERS: 0 25 50 100 150

REVISED TO: JANUARY 1, 2018

PROPERTY MAPS
WELLSFLEET
 MASSACHUSETTS

INDEX DIAGRAM

MAP NO.
12



THIS MAP IS FOR ASSESSMENT PURPOSES. IT IS NOT VALID FOR LEGAL DESCRIPTION OR CONVEYANCE.
 THE HORIZONTAL DATUM IS THE MASSACHUSETTS STATE PLANE COORDINATE SYSTEM, NAD 83.
 COMPILED AND DRAWN BY SLICE ASSOCIATES, INC. REGISTERED LAND SURVEYORS ROUTE 5 @ PINE POINT ROAD, WELLSFLEET, MA 02667
 COMPLETION DATE: JANUARY 1, 1993

REVISED & REPRINTED BY
CAI Technologies
 Precision Mapping. Geographic Solutions.
 25 Pleasant Street, Wellsfleet, MA 02667
 800.552.0266 - www.cai.com

(SEE ALSO SHEET 20)

LEGEND

AREA	AC	FRONT OF REVOCABLES	-----
REGGIC DIMENSION	500D	COMMON OWNERSHIP	-----
SCALD DIMENSION	1000X	WETLANDS	-----
SHRUB DIMENSION	1000X		
WATER	-----		

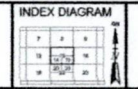
(SEE ALSO SHEET 21)

SCALE: 1" = 200'

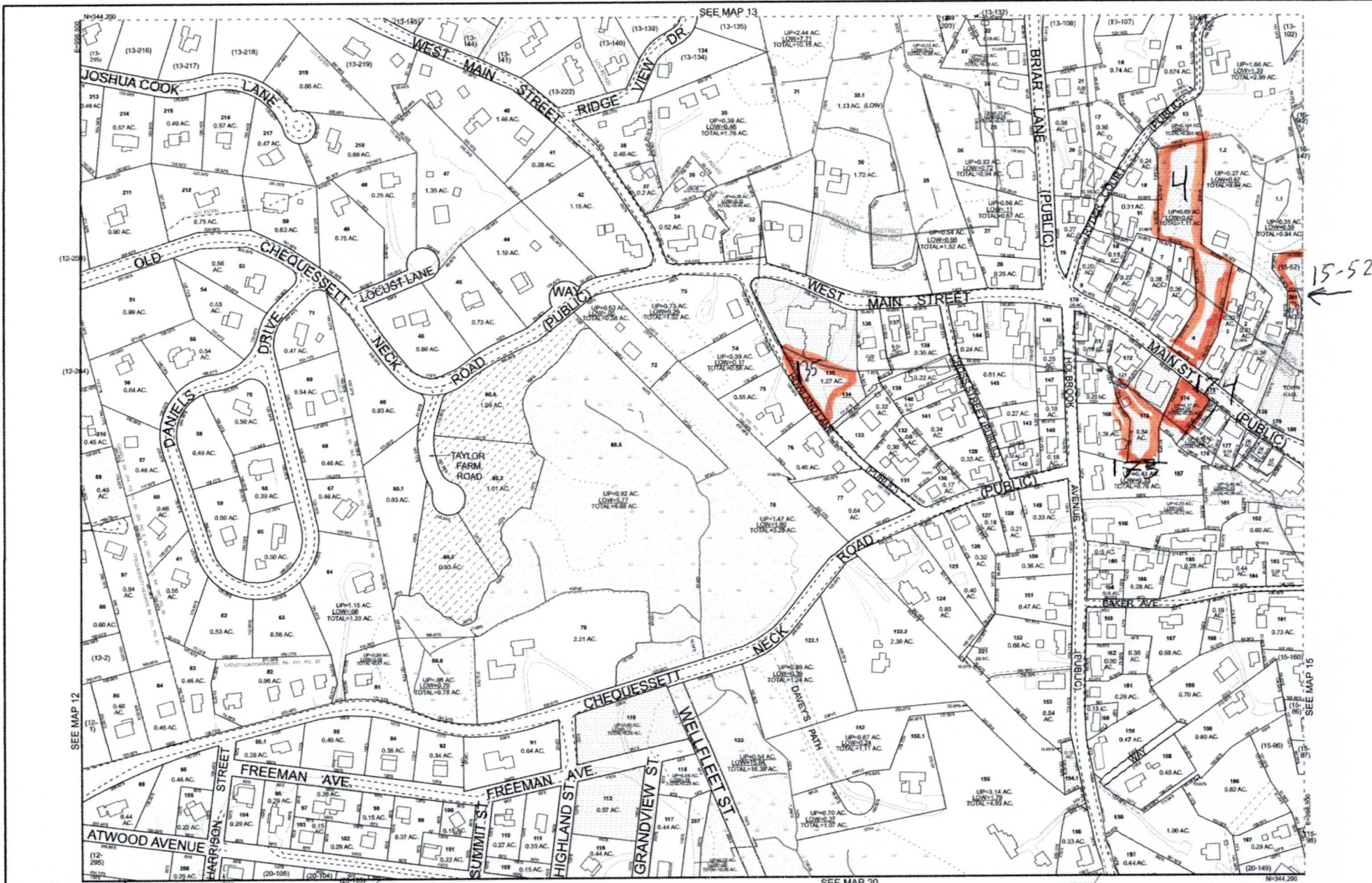
FEET
 0 100 200 300 400 500
 0 50 100 150 200
 METERS

REVISED TO: JANUARY 1, 2019

PROPERTY MAPS
WELLFLEET
 MASSACHUSETTS



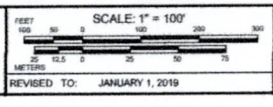
MAP NO.
13



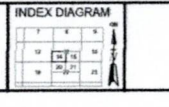
THIS MAP IS FOR ASSESSMENT PURPOSES. IT IS NOT VALID FOR LEGAL DESCRIPTION OR CONVEYANCE.
 THE HORIZONTAL DATUM IS THE MASSACHUSETTS STATE PLANE COORDINATE SYSTEM (MGS 83).
 COMPILED AND DRAWN BY SLADE ASSOCIATES, INC. REGISTERED LAND SURVEYORS ROUTE 6 @ PINE POINT ROAD, WELLFLEET, MA 02627
 COMPLETION DATE: JANUARY 1, 1999

REVISED & REPRINTED BY
CAI Technologies
 11 Pleasant Street, 1st Floor, Weymouth, MA 02627
 617.332.4542 www.cai-tech.com

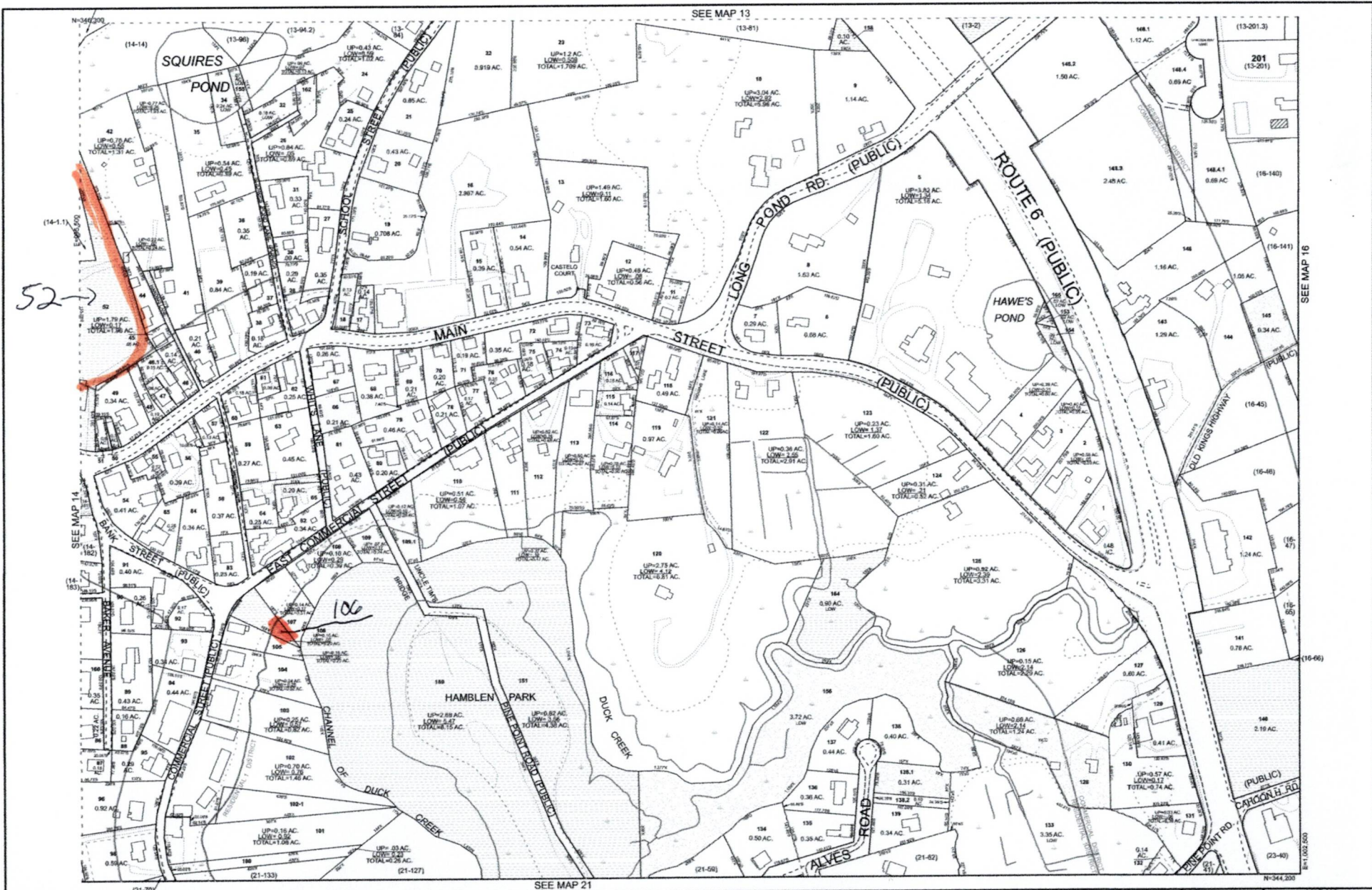
LEGEND	
AREA	AC
RIGHT OF ENCLOSURE	100%
SCALE BY DIMENSION	100%
SURVEYED DIMENSION	100%
WATER	100%



PROPERTY MAPS
WELLFLEET
 MASSACHUSETTS



MAP NO.
14

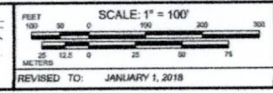


THIS MAP IS FOR ASSESSMENT PURPOSES. IT IS NOT VALID FOR LEGAL DESCRIPTION OR CONVEYANCE.
 THE HORIZONTAL DATUM IS THE MASSACHUSETTS STATE PLANE COORDINATE SYSTEM, MADS 83.
 COMPILED AND DRAWN BY SLAGE ASSOCIATES, INC., REGISTERED LAND SURVEYORS ROUTE 6 & PINE POINT ROAD, WELLFLEET, MA 02667
 COMPLETION DATE: JANUARY 1, 1993

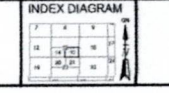
REVISED & REPRINTED BY
CAI Technologies
Technics Mapping, Geomatics Software
 87 Pleasant Street, Suite 200
 02631-4540 - www.cai-tech.com

LEGEND

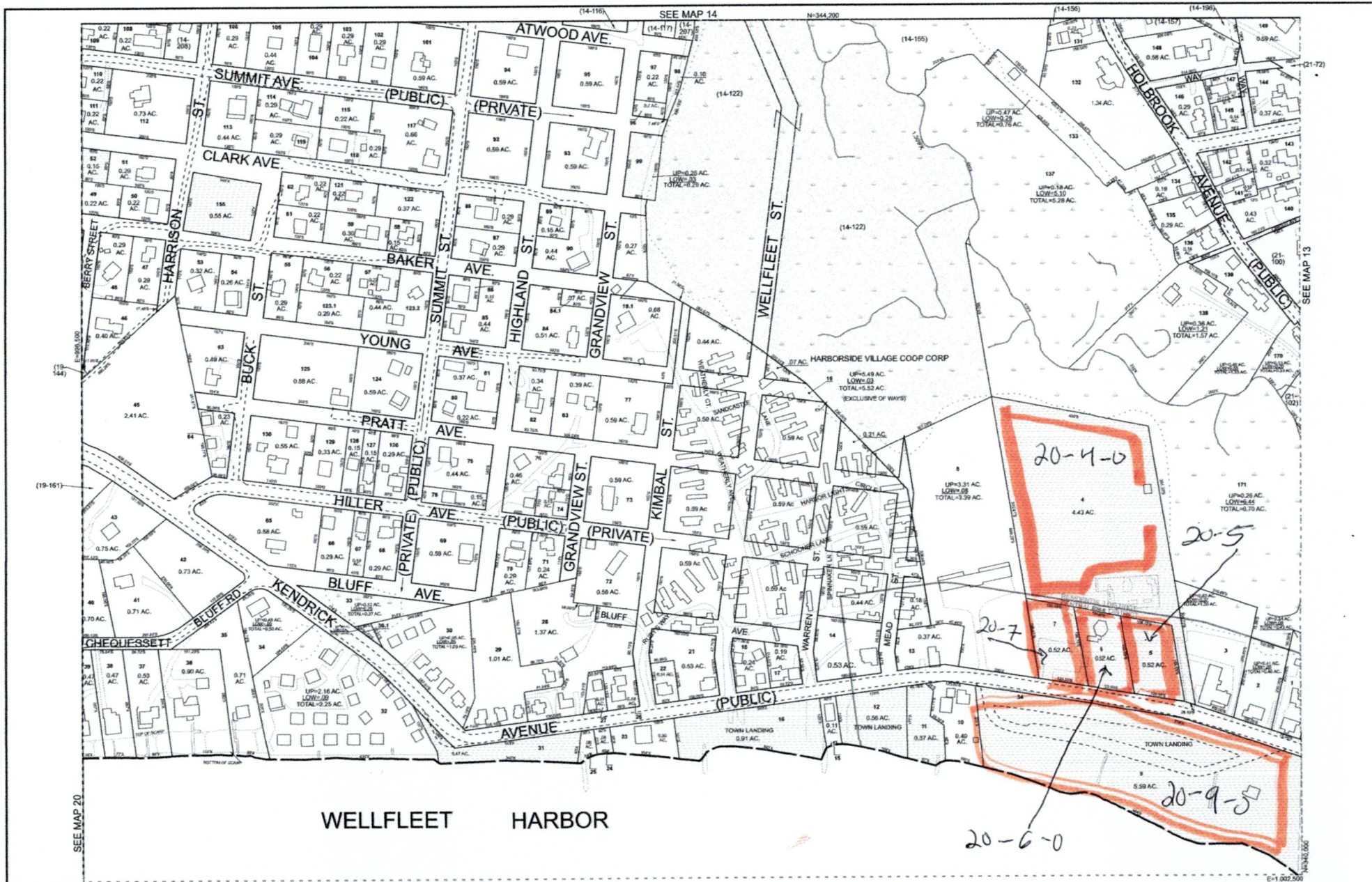
AREA	AC
RECORD DIMENSION	100D
SHOWED DIMENSION	100X
MARKED DIMENSION	100S
WETLANDS	WETLANDS
HIGHWAY	100H
WATER	100W



PROPERTY MAPS
WELLFLEET
 MASSACHUSETTS



MAP NO.
15

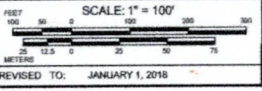


THIS MAP IS FOR ASSESSMENT PURPOSES. IT IS NOT VALID FOR LEGAL DESCRIPTION OR CONVEYANCE.
 THE HORIZONTAL DATUM IS THE MASSACHUSETTS STATE PLANE COORDINATE SYSTEM, NAD 83.
 COMPILED AND DRAWN BY SLADE ASSOCIATES, INC. REGISTERED LAND SURVEYORS ROUTE 6 @ PINE POINT ROAD, WELLFLEET, MA 02667
 COMPLETION DATE: JANUARY 1, 1993

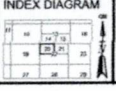
REVISED & REPRINTED BY
CAI Technologies
 The Massachusetts Geographic Solutions
 11 Pleasant Street, Lynn, MA 01904
 603.254.4444 www.cait.com

LEGEND

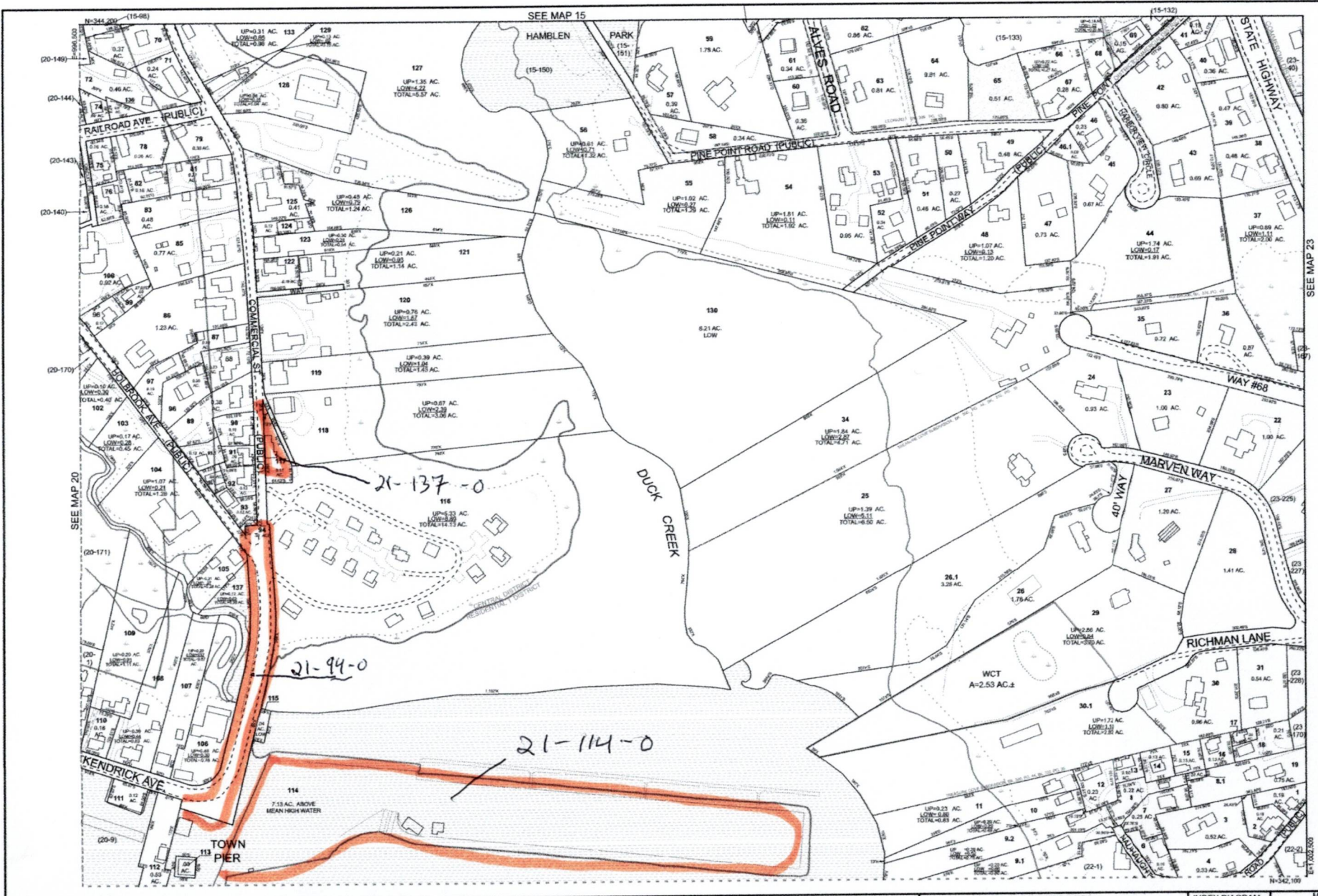
AREA	Ac
RIGHT OF WAY/ACCESS	100%
WATER	100%
WELLFLEET	100%



PROPERTY MAPS
WELLFLEET
 MASSACHUSETTS



MAP NO.
20

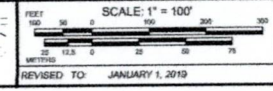


THIS MAP IS FOR ASSESSMENT PURPOSES. IT IS NOT VALID FOR LEGAL DESCRIPTION OR CONVEYANCE.
 THE HORIZONTAL DATUM IS THE MASSACHUSETTS STATE PLANE COORDINATE SYSTEM, NAD 83.
 COMPILED AND DRAWN BY BLAKE ASSOCIATES, INC. REGISTERED LAND SURVEYORS ROUTE 6 @ PINE POINT ROAD, WELLFLEET, MA 02627
 COMPLETION DATE: JANUARY 1, 2019

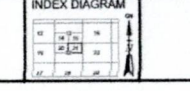
REVISED & REPRINTED BY
CAI Technologies
 Precision Mapping. Unlimited Solutions.
11 Phoenix Street, Uxbridge, MA 01568
 508.223.4246 • www.cai-tech.com

LEGEND

AREA	AC	RIGHT OF WAY/ENCLOSURE	666
BOUNDARY DIMENSION	100/0	COMMON CORNER/SEPT	0/0
SCALD DIMENSION	100/0	WETLANDS	100/0
MARSH/CULDS DIMENSION	100/0		
WATER	100/0		



PROPERTY MAPS
WELLFLEET
 MASSACHUSETTS



MAP NO.
21



(SEE ALSO SHEET 21)

SEE MAP 22

SEE MAP 22

SEE MAP 16

SEE MAP 24

THIS MAP IS FOR ASSESSMENT PURPOSES. IT IS NOT VALID FOR LEGAL DESCRIPTION OR CONVEYANCE.
 THE HORIZONTAL DATUM IS THE MASSACHUSETTS STATE PLANE COORDINATE SYSTEM NAD 83.
 COMPILED AND DRAWN BY SLADE ASSOCIATES, INC. REGISTERED LAND SURVEYORS ROUTE 6 @ PINE POINT ROAD, WELLFLEET, MA 02622.
 COMPLETION DATE: JANUARY 1, 1993

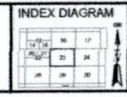
REVISED & REPRINTED BY
CAI Technologies
 11 Pleasant Street, 1st Floor, Natick, MA 02646
 508.252.1545 • www.cai.net/tech

LEGEND
 ACRES AC
 FEET DIMENSION 1000'
 SURVEY DIMENSION 100X'
 WATER WATER

SCALE: 1" = 200'
 REVISION TO: JANUARY 1, 2019

SEE MAP 29

PROPERTY MAPS
WELLFLEET
 MASSACHUSETTS



MAP NO.
23

Date: January 29th 2024

To: Rebecca Taylor, Chair Shellfish Advisory Board (SAB)

From: Stephen Polowczyk, Finance Committee liaison to the Shellfish Department

Re: Request for information concerning the Shellfish Department's Budgets and the January 18th 2024 SAB meeting

Rebecca,

By what authority does the SAB have to review and provide input on the Shellfish Department's Budgets or on the Shellfish Department's day to day operations?

According to the town Charter the SAB is "**to serve as a Shellfish Advisory Board to the Selectmen and to make a study of existing shellfish conditions and to advise relative to any plan for future improvement and development of the industry**", there is no mention of budgeting input, staffing recommendations etc. and I could not locate any existing bylaws or policies that gives the SAB the authority to engage in budget discussions or to engage in giving the Shellfish Constable direction with regards to the day to day operations of the shellfish department, should you have any such documents please provide me with copies.

I did find the following under the Select Board Policies tab under Policy on Advisory Board Correspondence:

"Advisory Boards, Committees, and Commissions of the Town shall regularly review their original charges." When was the last time your board reviewed your board's charges as per the town charter?

"Activities in the name of the committee shall be restricted to such charges" this is not what I witnessed during your board meeting on January 18th 2024, no mention of studies of existing shellfish conditions or plans for future improvement and development of the industry, instead there was a heated debate over the Shellfish Budget and the open full time position, which in my opinion is none of the boards business unless you can prove otherwise.

"Any correspondence or contact with Town employees, or outside agencies which represents a position or expression of opinion on behalf of the board, committee, or commission or the Town of Wellfleet shall be submitted to the Board of Selectmen for its approval prior to any such contact" Do you have a copy of an approval from the Board of Selectmen giving you the Ok to engage in budget discussions or to engage in giving the Shellfish Constable direction with regards to the day to day operations of the shellfish department that you could provide me?

As chair part of your responsibilities is to ensure that the board adheres to the charges as defined in the town charter which is **“to serve as a Shellfish Advisory Board to the Selectmen and to make a study of existing shellfish conditions and to advise relative to any plan for future improvement and development of the industry”**, to veer from this charge it would appear to me you are running the risk of creating a liability for the town by fostering harassment in the work place and promoting the appearance of a conflict of interest for those board members who are in the shellfish industry, two of my observations from your meeting on January 18th 2024, this has to stop hence my memo to you bringing these concerns to your attention, unless you can prove otherwise.

When responding to my questions in writing please include any documents that you may feel may support the SAB’s opinion that the SAB is well within its authority to review and provide input on the Shellfish Department’s Budgets or the Shellfish Department’s day to day operations, for your convenience I have provided you with a copy of the SAB’s charge as per the Charter and a copy of the Selectmen’s policy on Advisory Board Correspondence and in closing I want to thank you in advance to your prompt attention to my request for information

Respectfully submitted



Stephen Polowczyk

Finance Committee liaison to the Wellfleet Shellfish department

CC: TA, Select Board, Finance Committee, Shellfish Constable, HR, MA Ethics Commission, KP Law
Attachments: Shellfish Advisory Board Charge, Board Of Selectmen’s Policy on Advisory Board Correspondence



Town of
WELLFLEET
Massachusetts

Published on *Wellfleet MA* (<https://www.wellfleet-ma.gov>)

[Home](#) > [Boards & Committees](#) > [O-Z](#) > Shellfish Advisory Board

Shellfish Advisory Board

ATM 1965, Art. 38 [voice vote]

To see if the Town will vote to appoint a committee of 5 members to serve as a Shellfish Advisory Board to the Selectmen and to make a study of existing shellfish conditions and to plan for the future improvement and development of the industry. This committee to be appointed by the Board of Selectmen, and that \$100 be raised and appropriated to cover expenses.

This article was amended to read that three members shall be Commercial Shellfishermen and the appointment be made within 60 days.

STM 1986, Art. 36 [voice vote]

Voted: to amend Article 38, Annual Town Meeting of February 23, 1965, by expanding the Shellfish Advisory Board to include two (2) alternate members to be appointed by the Board of Selectmen.

STM 1996, Art. 12 [voice vote]

To see if the Town will vote to amend Article 38 of the February 23, 1965 Annual Town Meeting by changing the language to read as follows:

To see if the Town will vote to appoint a committee of five members to serve as a Shellfish Advisory Board to the Selectmen and to make a study of existing shellfish conditions and TO ADVISE RELATIVE TO ANY plan for improvement and development of the industry, take any action.

Voted: Unanimous voice to amend the action taken under Article 38 of the February 23, 1965 Annual Town Meeting by inserting the words "to advise relative to any" so that that amended sentence shall read... "to serve as a Shellfish Advisory Board to the Selectmen and to make a study of existing shellfish conditions and to advise relative to any plan for future improvement and development of the industry". The remainder of Article 38 of the February 23, 1965 Annual Town Meeting as amended remain as voted.

STM 1999, Art. 28 [voice vote as printed]

To see if the Town will vote to increase the membership of the Shellfish Advisory Committee from five regular members to **seven regular members plus two alternate members**.

Hours of Operation:

SAB@Wellfleet-MA.gov

Address

300 Main St.
Wellfleet, MA 02667
United States
See map: [Google Maps](#)

Members

Name	Title	Term
Rebecca Taylor	Member	06/30/2024
John Duane	Member	06/30/2024
Nick Sirucek	Member	06/30/2025
Ethan Etsey	Member	06/30/2024
Stephen Pickard	Member	06/30/2025
Adrien Kmiec	Member	06/30/2026
Brad Morse	Member	06/30/2025
Damian Parkington	Alternate	06/30/2025
Chris Merl	Alternate	06/30/2026

Source URL: <https://www.wellfleet-ma.gov/shellfish-advisory-board>

BOARD OF SELECTMEN
Policy on Advisory Board Correspondence
Original Date: April 20, 1988
1988-1

Revised: March 7, 1994
Reaffirmed: January 20, 1998
Revised: June 22, 1999
Reaffirmed: January 8, 2001
Reaffirmed: March 9, 2004

Advisory Boards, Committees, and Commissions of the Town shall regularly review their original charges (and any subsequent revisions).

Activities in the name of the committee shall be restricted to such charges, unless otherwise stated in the General Law.

Any correspondence or contact with Town employees, or outside agencies which represents a position or expression of opinion on behalf of the board, committee, or commission or the Town of Wellfleet shall be submitted to the Board of Selectmen for its approval prior to any such contact.



Wellfleet Shellfish Department



300 Main Street, Wellfleet, Massachusetts 02667

Date: February 7, 2024
To: Leon Shreves, Chair, Wellfleet Conservation Commission and members
Barbara Brennessel, John Cumbler, Benjamin Fairbank, Michael Fisher,
Martin Murphy, Robert Stewart
CC: Jennifer Elsensohn, Health & Conservation Dept., Wellfleet
Richard Waldo, Town Administrator, Wellfleet
From: Wellfleet Shellfish Department
Re: Commercial Shellfishermen Driving at Chipman's Cove

Dear Mr. Shreves and Conservation Commission members

Chipman's Cove is open for shellfishing the last Sunday of October to April 30 each year. The area is used by both commercial and recreational shellfish permit holders. There are two major shellfish harvested in the area which are oysters and quahogs. This area is the most fished area in the harbor in the wintertime, and the best spawning area for shellfish in the summer. The Shellfish Department stocks the area with oysters and quahogs throughout the year. As our primary spawning ground and winter fishery area, we also annually deposit cultch in Chipman's Cove to provide nursery habitat for larval oysters to set on.

The main access to Chipman's Cove is Old Pier Rd. Recreational permit holders park on the left-hand side of the road and commercial permit holders usually park on the beach below the high tide line. The commercial shellfishermen are allowed a bushel of quahogs and oysters per day in this area, and the recreational are allowed (depending on if they fished another area) 10 quarts per week. The commercial fishermen mainly park on a sandy area in front of the landing, while a few will drive south down the beach to fish the mud area. Again, this area is below the mean high tide line. The area sees the most activity in the first two months after the opening. We usually observe around seven trucks parking in front of the landing and around two to three parking south, and at most, two trucks parking north of the landing. Vehicle usage decreases over time, especially in early December when Duck Creek opens and beginning in mid-March when the Herring River opens.

The bushels of shellfish are very heavy, so the commercial shellfishermen either drag their bushels by sled, beach-wheeled cart, or carry them over the shoulder. The area has different focal points for harvesting throughout the year. In the beginning, the fishermen primarily fish the outer bars for oysters and dig clams in front of the landing. The southern area (mud area) is usually fished when the main area is slightly depleted. There are shellfish resources throughout Chipman's Cove that are able to be accessed from other landing points.

wellfleet-ma.gov/shellfish-department

Phone (508) 349-0325



Fax (508) 349-0305

In addition, for a couple of weeks in June and September, shellfishermen use the beach landing below the high tide mark to put in and remove their spat collecting devices. Remote set gathering is a long-standing Wellfleet tradition, and Chipman's Cove is thought to be our premier location for the capture of juvenile oysters. The deployment of cement covered apparatus is a physically demanding activity that requires truck access from Old Pier Rd. As you can imagine, they are even heavier coming out laden with seed oysters. This remote set program allows growers to obtain deeply discounted seed, some of which is donated to the department for grow out and distribution in the Cove for eventual harvest. Last year, for example, we received more than 250,000 oyster seed as donations from these shellfishermen's efforts.

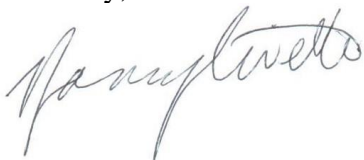
It is our understanding that we are all striving for a balance of protection and access. In that, we are united. We need to weigh the economic impact and goals of the Town versus the potential harm caused to the environment. We agree that revetments cause the most damage, yet you are required by law to allow them in certain instances. We hope that your discussion will include other site hardening activities and options such as matting for erosion control. Please see three attached Google Earth maps taken 11 years apart from 12-31-2001, 3-11-2012 and 3-18-2023.

Shellfisherman Pat Winslow was on your board in the late-2000's when the map that Mr. Nickerson distributed was decided on. We hope he will attend your Feb. 21, meeting, to recount that episode in his service on the board. He has told us that this issue was thoroughly discussed at Conservation Commission, and the map was made and signs installed. Somewhere in the past decade, the intention of that compromise was lost by both the Conservation Commission and the Shellfish Department. In fact, the signage has never been at Chipman's Cove in the tenure of Shellfish Constable Nancy Civetta's six+ years.

Driving on the beach is an accepted activity in many towns on the Cape and the National Seashore. This oversand usage is mostly recreational. It is certainly under a management plan; something that has not yet been effectively implemented in Wellfleet since the 2007 compromise was established by the Conservation Commission in the attached map.

Before we initiate any changes, we would respectfully ask that we go back to the original 2007 agreement so that we can effectively implement that compromise before we change anything else. The Shellfish Department fully accepts the responsibility of enforcement as needed.

Sincerely,



Nancy Civetta
Shellfish Constable







Old Pier Road Shellfish Access

Old Pier Road

Chilomans Cove

Access and Parking On Blue Road Area
Only

Please Be Advised This Is Private Property Owner Premission Required

No Driving Beyond This Point

Copyright ©2007 Pictometry International Corp

CONSERVATION COMMISSION

The Conservation Commission is charged with the protection of wetlands under the Massachusetts Wetland Protection Act and the Wellfleet Environmental Protection By-law. It also has the responsibility of managing town-owned lands used for conservation and recreation. The commission consists of seven members appointed by the Board of Selectmen for a term of three years.

The WPA prohibits any filling, excavation, dredging or other alteration of any wetland areas, including vegetated wetlands, floodplains and riverfront areas. In addition to these, the Act also protects banks, dunes, beaches, vernal pools, and land under designated waters.

Why is this important? Over half of this country's original wetland acreage has been lost. The cost of this loss in degraded water quality, increased storm damage, and depleted fish, wildlife and plant populations has been well documented. Directly or indirectly, wetlands are often sources of public or private drinking water supplies. Moreover, floodplains provide storage for floodwaters; any alteration of the land that reduces this storage capacity will displace floodwaters and cause greater flooding elsewhere. Beaches and dunes are dynamic systems that are continually shifting; in addition to preventing storm damage, coastal banks and dunes can naturally replenish beaches the same as truckloads of sand, but at much less cost.

Addressing applications for projects within these natural resource areas and buffer zones, the Commission held 224 hearings including hearings for Notices of Intent, Requests for Determination of Applicability, Amended Order of Conditions, Extension to Order of Conditions, Certificates of Compliance, Jurisdictional Opinions, shellfish grant access permits and Conservation Restrictions.

This year the Commission continued the ongoing assessment of the bay side beaches with the Woods Hole Group to evaluate renourishment options, sand drift patterns, dredging opportunities, and obstacles to overcome prior to any actions. This project has taken a bit longer than expected to reach completion however, We are hoping to have a draft report available during the upcoming year.

In June, notification was received from the Association of US Delegates to the Gulf of Maine Council on the Marine Environment that the grant application submitted was approved for the amount of \$35,000.00 to conduct a salt marsh restoration feasibility study in Mayo Creek. We eagerly await the results of the modeling to assess whether a restoration is

ATE, AS

DOGS

p Clinic - 1

g Check - 4

Owner - 21

al Calls - 39

antines - 12

ections - 15

ransport - 1

m Calls - 1

ish Calls - 3

real Calls - 5

hin Calls - 4

& Killed - 4

s (Other) - 3

ck Calls - 11

rel Calls - 3

obit Calls - 6

orse Calls - 2

at Calls - 12

on Calls - 14

ox Calls - 26

yote Calls - 4

urtle Calls - 5

nake Calls - 4

Bee Calls - 2

us Calls - 779



possible at this site. We also continue to monitor the progress of the Herring River Restoration Committee and see this as a very unique opportunity to restore many acres of salt marsh.

In an effort to further protect resource areas from unnecessary destruction the Commission along with support staff created vehicle access maps for the shellfishing community. Several maps were created and mailed to all commercial shellfishermen and grant holders. We continue to struggle with this issue and will try varying solutions during the upcoming year.

We wish to again offer thanks to the many individuals and organizations who support our goals and for the energy and resources of AmeriCorps and the Wellfleet Conservation Trust in assisting us with development of our town conservation lands and trails.

The Commission welcomed new members Lauren McKean, Edward Simpson, and Trudy Vermehren who bring great expertise and experience to our board.

Respectfully submitted,

Virginia (Ginie) Page, Co-Chair
Terry Gips, Co-Chair

BOARD

For the 2006 Harbor again focused on actions to implement

s Project. A report nitrogen overload

attachment basins to

committee on plans to salt marsh system

new regulations to

each renourishment

Creek and the east

for horseshoe crabs

Committee and the use of Wellfleet's

Comprehensive Plan gave of Wellfleet Harbor the Town. The 2008

the HMP. In addition it's kettle ponds

d.

SHELLFISH ADVISORY COMMITTEE

The Shellfish Advisory Board met 13 times in 2008, including site visits. John Duane, formerly an alternate, became a regular member and we welcomed a new, regular member, Rebecca Taylor to our committee. We worked successfully with other agencies on matters assigned to us by the Selectboard or that came to our attention and which impact the fishery, making recommendations as well as drafting new language for regulations.

Most notably, working with the Constable and the Division of Marine Fisheries, we drafted an historic new regulation that would permit the harvest of aquaculturally grown oysters under 3" in length, under certain circumstances, with a special permit. The Selectboard voted to approve it on October 28th.

At the request of the Selectboard we spent many hours working on the Beach Regulations that deal with the problems of animal waste on the Town's beaches and landings, in collaboration with the Animal Control Office, the National Park Service, the Health/Conservation Agent, the Beach Administrator and a number of dogs. We submitted them to the Beach Administrator and the Selectboard on November 28th.

In response to a memo from the Health/Conservation Agent regarding aquaculture debris, we drafted an amendment to 10.1.10 of the Shellfishing Regulations which was passed by the Selectboard on February 26th.

We researched horseshoe crabs and discussed the need for their sustainable harvest. We met with Brenda Boleyn of the Committee for the Preservation of Horseshoe Crabs and Robert Prescott from the Massachusetts Audubon Society, to learn more. Mass. Audubon has begun a three year study of the crabs in Wellfleet harbor to establish baseline data. Following these meetings, we drafted a letter to the Department of Marine Fisheries, requesting a moratorium on the harvest of horseshoe crabs in Wellfleet waters until the population status of the species can be assessed.

After some comparative research and discussion, we voted to raise the Town's shellfish license fees and drafted some related requirements, at the request of the Selectboard. They voted to raise the fees for the first time in 23 years, on May 27th.

The committee, the Constable and the shellfishing community who use several times with some members of the Indian Neck and Old Pier vehicle access to Chipman's Cove from both Indian Neck and Old Pier Road, regarding the recent degradation of those areas. A plan was developed to improve the situation, which is under the jurisdiction of the Conservation Department.

Please see counsels' opinion below, minor correction being that the principal clerk position is now filled.

Richard J. Waldo

Town of Wellfleet - Town Administrator
300 Main Street
Wellfleet MA 02667
Phone 508-349-0300 ext. 1115
Fax 508-349-0305
Email: richard.waldo@wellfleet-ma.gov

From: Carolyn M. Murray <CMurray@k-plaw.com>
Sent: Thursday, November 9, 2023 6:28 PM
To: Richard Waldo <Richard.Waldo@wellfleet-ma.gov>
Subject: Wellfleet: Deputy Shellfish Constable Position

CAUTION: This email originated from outside of the organization. Do not click links or open attachments unless you recognize the sender and know the content is safe.

Rich,

You have requested an opinion regarding your authority to make certain personnel changes, such as amending job descriptions and including the authority to reorganize a Town department, specifically the Shellfish Department. For the reasons discussed herein, it is my opinion that you have the authority to update job descriptions to add duties and to convert a position to a full-time position as an exercise of your general personnel authority, provided sufficient funds have been appropriated and any new duties negotiated with the WEA collective bargaining unit. In addition, it is my opinion that you and the Selectboard have the authority to reorganize positions and duties under your supervision, unless such reorganization conflicts with state law or the Town's Charter.

By way of background, you have provided information reflecting that a ¾ time Deputy Shellfish Constable was funded by Town Meeting in the Shellfish Department budget for Fiscal Year 2024. This position is included in the WEA Unit B collective bargaining unit. After concluding that a ¾ time Deputy Shellfish Constable position could not be filled, you proposed adding duties to the Deputy Shellfish Constable position to justify increasing it to a full-time position. The additional duties added to the Deputy Shellfish Constable were derived from duties previously performed by the Principal Clerk position within the General Administration budget, which provides administrative support to you and the Selectboard but also supports the Shellfish Department with the issuance of shellfish permits and renewals. This Principal Clerk position is currently vacant, but is fully funded within the General Administration budget, which is overseen by you and the Selectboard. To fund the added cost of increasing the Deputy Shellfish Constable to a full-time position, you proposed re-allocating funds within the Shellfish Department from unused personnel expenses, and if necessary, by transferring unused funds from the vacant Principal Clerk position. This re-assignment of duties was questioned as a reorganization, so it was brought before the Selectboard, who approved it in July 2023. You have advised that the full-time Deputy Shellfish Constable position was advertised, and a successful candidate search was completed. However, a group of

individuals in Town have questioned your authority to convert this ¾ time position to a full-time position or to reorganize the position.

As you know, the Town has adopted a Charter pursuant to G.L. Chapter 43B, which upon adoption, has equivalent standing to state law. Under the Town's Charter, Section 3-2-1, "the executive powers of the Town" are vested in the Selectboard, and pursuant to Section 3-6-1(d), the Selectboard appoints a Shellfish Constable. In addition, G.L. c.130 Section 98 provides, in part, "In each city and town bordering on coastal waters the mayor or the selectmen, as the case may be, shall appoint a person or persons, qualified by training and experience in the field of shellfishery management, as shellfish constables or deputy constables." Accordingly, under the Charter and state law, the Shellfish Department is under the purview of the Selectboard.

Section 5-3-1 of the Charter establishes the Town Administrator is the "chief administrative officer [who] ...shall be responsible for the direction and supervision of all employees, activities and departments placed by MGL, this Charter or bylaws under the control of the Selectboard." Through this provision, the Town Administrator generally directs and supervises the Shellfish Department. Further, under Section 5-5, the Town Administrator administers the Personnel Bylaws and "approve[s]... and maintain[s]... the job description of all appointed positions under the direction of the Selectboard or Town Administrator."

Reading all of these Charter provisions together, the Town Administrator has the authority to direct and supervise personnel and update job descriptions for positions within the Shellfish Department. Therefore, it is my opinion that adding duties to and consistent with the position of Deputy Shellfish Constable was a proper exercise of your personnel and administrative authority as Town Administrator.

To the extent that transferring duties from the vacant Principal Clerk position to the Deputy Shellfish Constable is considered a reorganization, Section 5-6-1 of the Charter states, "The Town Administrator may, with the approval of the Selectboard, establish, reorganize, consolidate, or abolish any positions under the Town Administrator's direction and supervision, except as otherwise provided by MGL and this Charter." I am not aware of any provision of state law that would bar a reorganization of Deputy Shellfish Constable duties. Moreover, the duties added to the Deputy Shellfish Constable position relate to shellfish permits, which is a natural extension of or even inherent to the duties for this position, such that this may not be considered a reorganization. Regardless, this re-assignment of duties to the Deputy Shellfish Constable was approved by the Selectboard as a reorganization, in conformance with the Charter.

Please contact me if you have any further questions.

Thank you,

Carolyn M. Murray, Esq.

KP | LAW

101 Arch Street, 12th Floor

Boston, MA 02110

O: (617) 654 1726

F: (617) 654 1735

C: (617) 257 9581

1/15/2024

TOWN OF WELFLEET, MASSACHUSETTS

FISCAL YEAR 2025 OPERATING BUDGET



SHELLFISH DEPARTMENT BUDGET

FISCAL YEAR 2025 OPERATING BUDGET
SHELLFISH DEPARTMENT BUDGET SUMMARY - BY TOWN MEETING APPROPRIATION

DESCRIPTION	BUDGETS			ACTUALS			
	FY 25 BUDGET	FY 24 BUDGET	FY 23 BUDGET	FY 23 ACTUAL	FY 22 ACTUAL	FY 21 ACTUAL	3 YR AVERAGE
SALARIES (FULL-TIME)	330,517	301,816	245,275	246,794	223,966	227,718	232,826
SALARIES (PART-TIME)	10,160	10,160	35,416	24,512	35,550	20,007	26,690
SALARIES (TEMPORARY)			2,400	1,200	2,400	2,400	2,000
OVERTIME	3,600	3,603	3,603	6,795	2,303	3,359	4,152
SALARY SUB TOTAL	\$ 344,277	\$ 315,579	\$ 286,694	\$ 279,301	\$ 264,219	\$ 253,484	265,668
Propogation Expense	6,000	6,000	6,000	5,935	5,958	1,706	4,533
Shellfish Department Expense	31,860	31,860	28,560	24,302	26,197	22,817	24,439
EXPENSE SUB TOTAL	\$ 37,860	\$ 37,860	\$ 34,560	\$ 30,237	\$ 32,155	\$ 24,523	\$ 28,972
TOTAL OPERATING BUDGET	\$ 382,137	\$ 353,439	\$ 321,254	\$ 309,538	\$ 296,374	\$ 278,007	\$ 294,640

TOWN OF WELFLEET, MASSACHUSETTS

FISCAL YEAR 2025 OPERATING BUDGET

SHELLFISH DEPARTMENT BUDGET

BUDGET ACCOUNT DETAILS

DRAFT

FISCAL YEAR 2025 OPERATING BUDGET
SHELLFISH DEPARTMENT

Shellfish Salary Expense Detail

	FY 2024 Budgeted			FY 2025 Budgeted		
	Name	FTE	Salary	Name	FTE	Salary
Full-Time Salaries (179-511000)						
Shellfish Constable	Nancy Civetta		98,646	Nancy Civetta		104,811
Asst. Shellfish Constable	John Mankevetch		78,606	John Mankevetch		83,519
Deputy Shellfish Constable	Christopher Manulla		70,364	Christopher Manulla		74,762
Deputy Shellfish Constable	Vacant		42,275	Vacant		55,250
Holiday Pay			8,000	Holiday Pay:		
				John Mankevetch		3,840
				Christopher Manulla		3,437
				Unallocated		723
Longevity			3,925	Longevity:		
				Nancy Civetta		475
				John Mankevetch		1,600
				Christopher Manulla		2,100
Subtotal Full-Time Salaries			301,816			330,517
Part-Time Salaries (179-512000)						
Seasonal Deputy Constable			10,160			10,160
Subtotal Part-Time Salaries			10,160			10,160
Temporary/Seasonal Salaries						
Subtotal Temporary Salaries			-			-
Overtime (179-53000)						
			3,603			3,600
Subtotal Overtime Salaries			3,603			3,600
GRAND TOTAL SALARIES			\$ 315,579			\$ 344,277

DEPARTMENT COMMENTS

FY 24 reported amounts include \$14,016 allocated from supplemental articles.

FISCAL YEAR 2025 OPERATING BUDGET
SHELLFISH DEPARTMENT

179

Shellfish Department Expense Detail

ORG	OBJECT	DESCRIPTION	BUDGETS			ACTUALS		
			FY 25 BUDGET	FY 24 BUDGET	FY 23 BUDGET	FY 23 ACTUAL	FY 22 ACTUAL	FY 21 ACTUAL
	520000	PURCHASE OF SERVICES						
	524000	REPAIRS & MAINTENANCE	5,250	5,250	4,750	4,111	5,945	1,557
179	524000	Repairs & Maintenece	5,250	5,250	4,750	4,111	5,945	1,557
	527000	RENTALS & LEASES						
	530000	PROFESSIONAL & TECHNICAL	5,000	5,320	5,400	3,708	5,011	5,747
179	530000	Contract Services	3,450	3,450	3,450	3,396	3,483	4,326
179	530400	Advertising						209
179	530700	Printing	1,000	1,200	650	251	1,193	1,212
179	530800	Seminars/Training	550	670	1,300	61	335	
	534000	COMMUNICATION	2,500	2,600	2,320	1,625	2,147	2,053
179	534000	Telephone	2,200	2,200	2,200	1,484	1,881	1,978
179	534500	Postage	300	400	120	141	266	75
	535000	OPERATIONAL & PROGRAM COSTS						
	540000	SUPPLIES	18,060	18,140	13,300	12,275	12,629	13,033
179	542000	Office Supplies	600	600	600	416	332	478
179	543000	Repair/maint. supplies	800	800	800	474	564	1,868
179	548500	Vehicle Supplies	400	400	200	119	420	115
179	548000	Gas/Diesel	11,000	12,000	8,700	6,797	7,669	2,940
179	558000	Other Fees	100	100	1,000	60	88	
179	540800	Other Supplies	2,160	2,120	800	1,850	874	5,053
179	558200	Uniforms	3,000	2,120	1,200	2,559	2,682	2,579
	560000	ASSESSMENTS						
	571000	TRAVEL & CONFERENCE	850	350	350	2,266	315	277
179	571000	Travel	850	350	350	2,266	315	277
	573000	DUES & MEMBERSHIPS	200	200	440		150	150
179	573000	Dues & Memberships	200	200	440		150	150
	574000	OTHER CHARGES & EXPENSES			2,000	317		
179	585000	Small Equipment			2,000	317		
TOTAL OPERATING BUDGET			\$ 31,860	\$ 31,860	\$ 28,560	\$ 24,302	\$ 26,197	\$ 22,817

			BUDGETS			ACTUALS		
ORG	OBJECT	DESCRIPTION	FY 25 BUDGET	FY 24 BUDGET	FY 23 BUDGET	FY 23 ACTUAL	FY 22 ACTUAL	FY 21 ACTUAL

DEPARTMENT COMMENTS

DRAFT

FISCAL YEAR 2025 OPERATING BUDGET
SHELLFISH DEPARTMENT

180

Shellfish Propagation Expense Detail

ORG	OBJECT	DESCRIPTION	BUDGETS			ACTUALS		
			FY 25 BUDGET	FY 24 BUDGET	FY 23 BUDGET	FY 23 ACTUAL	FY 22 ACTUAL	FY 21 ACTUAL
	520000	PURCHASE OF SERVICES						
	524000	REPAIRS & MAINTENANCE						
	527000	RENTALS & LEASES						
	530000	PROFESSIONAL & TECHNICAL						
	534000	COMMUNICATION						
	535000	OPERATIONAL & PROGRAM COSTS						
	540000	SUPPLIES	6,000	6,000	6,000	5,935	5,958	1,706
180	544400	Aquaculture Supplies / Cultch	6,000	6,000	6,000	5,935	5,958	1,706
	560000	ASSESSMENTS						
	571000	TRAVEL & CONFERENCE						
	573000	DUES & MEMBERSHIPS						
	574000	OTHER CHARGES & EXPENSES						
TOTAL OPERATING BUDGET			\$ 6,000	\$ 6,000	\$ 6,000	\$ 5,935	\$ 5,958	\$ 1,706

DEPARTMENT COMMENTS

A D J U S T M E N T S T O B U D G E T E D E X P E N D I T U R E S
 Report Sequence = Fund or Acct Group
 Account = First thru Last; Mask = 001-1-179-###.##-####.##
 Level of Detail = Object; Level = 9

Fund: GENERAL FUND

Period: July 2018 to June 2019

Account Number	Account Name	Current Year Budgeted	Adjustments	Net Working Budget	Current Year Expenditures	Encumbrances	Balance Remaining
OPERATING BUDGET							
SHELLFISH							
SAL/WAGES							
001-1-179-000.00-5110.04	S/W FULL TIME	186427.00	0.00	186427.00	185275.64	0.00	1151.36
001-1-179-000.00-5111.00	S/W PART TIME	6164.00	0.00	6164.00	5296.00	0.00	868.00
001-1-179-000.00-5130.00	S/W OVERTIME	0.00	0.00	0.00	4183.66	0.00	(4183.66)
001-1-179-000.00-5143.00	S/W HOLIDAY	0.00	0.00	0.00	3321.05	0.00	(3321.05)
001-1-179-000.00-5144.00	S/W LONGEVITY	2500.00	0.00	2500.00	2500.00	0.00	0.00
001-1-179-000.00-5150.00	VACATION BUYOUT	0.00	0.00	0.00	3893.47	0.00	(3893.47)
	TOTAL SAL/WAGES	195091.00	0.00	195091.00	204469.82	0.00	(9378.82)
EXPENDITURES							
001-1-179-000.00-5210.01	ELECTRICITY	0.00	0.00	0.00	0.00	0.00	0.00
001-1-179-000.00-5240.00	REPAIR/MAINT SERVICES	2000.00	0.00	2000.00	1953.13	0.00	46.87
001-1-179-000.00-5300.00	CONTRACT SERVICES	1600.00	0.00	1600.00	2733.98	0.00	(1133.98)
001-1-179-000.00-5300.20	SEMINARS/TRAINING	1000.00	0.00	1000.00	1380.00	0.00	(380.00)
001-1-179-000.00-5340.01	TELEPHONE	2200.00	0.00	2200.00	1687.16	0.00	512.84
001-1-179-000.00-5340.02	POSTAGE	120.00	0.00	120.00	81.96	0.00	38.04
001-1-179-000.00-5340.03	PRINTING	750.00	0.00	750.00	319.06	0.00	430.94
001-1-179-000.00-5340.04	ADVERTISING	0.00	0.00	0.00	396.93	0.00	(396.93)
001-1-179-000.00-5420.00	OFFICE SUPPLIES	500.00	0.00	500.00	561.07	0.00	(61.07)
001-1-179-000.00-5430.00	REPAIR/MAINT SUPPLIES	500.00	0.00	500.00	1211.71	0.00	(711.71)
001-1-179-000.00-5480.00	VEHICLE SUPPLIES	150.00	0.00	150.00	286.03	0.00	(136.03)
001-1-179-000.00-5480.01	GASOLINE/DIESEL	4000.00	0.00	4000.00	5135.38	0.00	(1135.38)
001-1-179-000.00-5580.00	OTHER SUPPLIES	0.00	0.00	0.00	597.52	0.00	(597.52)
001-1-179-000.00-5580.01	UNIFORM	1200.00	0.00	1200.00	433.68	0.00	766.32
001-1-179-000.00-5710.00	TRAVEL	395.00	0.00	395.00	273.80	0.00	121.20
001-1-179-000.00-5730.00	DUES/MEMBERSHIPS	210.00	0.00	210.00	260.00	0.00	(50.00)
001-1-179-000.00-5780.00	OTHER FEES	1500.00	0.00	1500.00	0.00	0.00	1500.00
001-1-179-000.00-5850.00	SMALL EQUIPMENT	2300.00	0.00	2300.00	289.99	0.00	2010.01
	TOTAL EXPENDITURES	18425.00	0.00	18425.00	17601.40	0.00	823.60
	TOTAL SHELLFISH	213516.00	0.00	213516.00	222071.22	0.00	(8555.22)
	TOTAL OPERATING BUDGET	213516.00	0.00	213516.00	222071.22	0.00	(8555.22)

A D J U S T M E N T S T O B U D G E T E D E X P E N D I T U R E S

Report Sequence = Fund or Acct Group

Account = First thru Last; Mask = 001-1-179-###.##-####.##

Level of Detail = Object; Level = 9

Fund: GENERAL FUND

Period: July 2018 to June 2019

Account Number	Account Name	Current Year Budgeted	Adjustments	Net Working Budget	Current Year Expenditures	Encumbrances	Balance Remaining
TOTAL	GENERAL FUND	213516.00	0.00	213516.00	222071.22	0.00	(8555.22)



Wellfleet Shellfish Department



300 Main Street, Wellfleet, Massachusetts 02667

MEMORANDUM

DATE: July 2, 2019

TO: Town of Wellfleet Selectboard and Finance Committee

CC: Town Administrator, Dan Hoort

RE: Wellfleet Shellfish Dept. Request for Year-End Transfer

Dear Selectboard and Finance Committee Members:

The Wellfleet Shellfish Dept. budget line 179 is overdrawn by \$14,184.71.

This is because we paid \$2,299.00 for an upgraded shellfish permit sales database we use with the Beach Dept. and the DPW. We had not budgeted for this as we did not know we were going to need the upgrade.

I also did not budget for holiday pay, overtime pay and vacation buyout. We are a seven day a week department, and when we do cultching in June and July, our days can run 12-14 hours. At budget time in 2017, I thought salaries were budgeted by the Town Administrator. I have had a steep learning curve with budgeting, but am working hard to fully understand and adequately prepare our budgets moving forward. I know that the FY20 budget will not be perfect, as I have learned so much at the turn of this fiscal year, that I am not sure I had understood last fall during my budgeting.

We paid \$4,183.66 in overtime (with TA approval in advance), \$3,321.05 in holiday pay and \$3,893.47 in vacation buyout. I am tracking our work days now, so that I can appropriately budget for these in the future.

These expenses bring our overages to \$13,697.18. The remaining funds (\$487.53) came from the increases in pay that both John Mankevetch and Chris Manulla received along with their promotions during FY19.

I am happy to answer any questions you may have.

Sincerely,

A handwritten signature in cursive script, appearing to read "Nancy Civetta".

Nancy Civetta, Shellfish Constable

wellfleet-ma.gov/shellfish-department

Phone (508) 349-0325



Fax (508) 349-0305

TOWN OF WELFLEET, MASSACHUSETTS

SHELLFISH DEPARTMENT

FIVE YEAR CAPITAL PLAN for Fiscal Year 2025 through 2030

ASSET TYPE/ITEM	Classification	Dept.	2025		2026		2027		2028		2029		2030		Thereafter Amount
			Amount	Src.	Amount	Src.	Amount	Src.	Amount	Src.	Amount	Src.	Amount	Src.	
FACILITIES AND LAND															
Indoor Work Space	Planning/Engineering														
Subtotal Facilities & Land			-		-		-		-		-		-		-
INFRASTRUCTURE															
Floating Upweller Nursery Project											45,000	FC			
Subtotal Infrastructure			-		-		-		-		45,000		-		-
FLEET INVENTORY (VEHICLES)															
Fleet Replacement Program	Vehicles	Shellfish	32,000	OAF	32,000	OAF	32,000	OAF	32,000	OAF	32,000	OAF	32,000	OAF	160,000
Barge	Vehicles	Shellfish													
Work Boat (Skiff)	Vehicles	Shellfish									35,000	FC			
Trailer	Vehicles	Shellfish													
Subtotal Fleet Inventory			32,000		32,000		32,000		32,000		67,000		32,000		160,000
EQUIPMENT															
Engine/Equipment Replacement Program	Operational Eq	Shellfish	25,000	FC	6,000	FC	6,000	FC	20,000	FC	6,000	FC	6,000	FC	30,000
Subtotal Equipment			25,000		6,000		6,000		20,000		6,000		6,000		30,000
TOTAL CAPITAL PLAN EXPENDITURE AMOUNTS			57,000		38,000		38,000		52,000		118,000		38,000		190,000

ANTICIPATED FUNDING SOURCES															
(CL) Capital Levy (Recurring)															
(CEX) Capital Levy Exclusion															
(BI) Bond Issuance															
(LI) Lease Issuance															
(FC) Free Cash			25,000		6,000		6,000		20,000		86,000		6,000		
(CPA) Community Preservation Act															
(AF) Ambulance Fund															
(CF) Cable Fund															
(SF) Shellfish Fund			32,000		32,000		32,000		32,000		32,000		32,000		
(OAF) Other Available Fund															
(Grt) Grant															
Other															190,000
TOTAL ANTICIPATED FUNDING			57,000		38,000		38,000		52,000		118,000		38,000		190,000

A D J U S T M E N T S T O B U D G E T E D E X P E N D I T U R E S
 Report Sequence = Fund or Acct Group
 Account = First thru Last; Mask = 001-1-180-###.##-####.##
 Level of Detail = Object; Level = 9

Fund: GENERAL FUND

Period: July 2018 to June 2019

Account Number	Account Name	Current Year Budgeted	Adjustments	Net Working Budget	Current Year Expenditures	Encumbrances	Balance Remaining
OPERATING BUDGET							
SHELLFISH CONSERV/PROPAGATION							
EXPENDITURES							
001-1-180-000.00-5581.00	AQUACULTURE SUPPLIES	6000.00	0.00	6000.00	13948.21	0.00	(7948.21)
001-1-180-000.00-5581.01	CULTCH	15000.00	0.00	15000.00	10847.65	0.00	4152.35
001-1-180-000.00-5581.02	SEED	25000.00	0.00	25000.00	10000.00	0.00	15000.00
	TOTAL EXPENDITURES	46000.00	0.00	46000.00	34795.86	0.00	11204.14
	TOTAL SHELLFISH CONSERV/PROPAGATION	46000.00	0.00	46000.00	34795.86	0.00	11204.14
	TOTAL OPERATING BUDGET	46000.00	0.00	46000.00	34795.86	0.00	11204.14
	TOTAL GENERAL FUND	46000.00	0.00	46000.00	34795.86	0.00	11204.14



Wellfleet Shellfish Department



300 Main Street, Wellfleet, Massachusetts 02667

ARTICLE NO. 13 – SHELLFISH REVOLVING FUND SPENDING LIMIT

(Consent Calendar):

To see if the Town will vote to establish a spending limit for FY2025 of \$60,000.00 for the Shellfish Revolving Fund established pursuant to MGL Chapter 44, Section 53E1/2, or to do or act on anything thereto.

(Requested by the Selectboard)

Majority Vote Required

Recommendations:

Selectboard:

Insert Yes – 0, No - 0, Abstain – 0. (Recuse)

Recommend Yes – 0, No - 0, Abstain – 0. (Recuse)

Finance Committee:

SUMMARY: The purpose of this article is to establish the spending limit for the Shellfish Revolving Fund which was established for propagation efforts. The Shellfish Department's propagation efforts include the seeding of quahogs and oysters in all Wellfleet waterways which also contributes to improving water quality and natural oyster set in our harbor to benefit growers and spat collectors. This revolving fund takes the responsibility for funding the shellfish department's budget line 180 out of the taxpayers' pockets and puts it in the hands of those who make their living in the shellfish industry and those who harvest shellfish recreationally. The Shellfish Propagation Revolving Fund revenues will be derived from shellfish grant revenue and permit fees. The Revolving Fund expenditures may be used for the propagation, cultivation, protection, and study of shellfish only.

wellfleet-ma.gov/shellfish-department

Phone (508) 349-0325



shellfish@wellfleet-ma.gov

Filter by: Segment 1: 20, 24
Segment 2: 179, 180

Parameters: Fiscal Year: 2023 Start Date: 7/1/2022 end: 6/30/2023

Ledger History - Allocated Trial Balance - Expenditure Ledger

Account Number		Allocated	Debits	Credits	Ending
20-179-5580-201013	SHELLFISH PROP REVOLVING	0.00	35.00	0.00	-35.00
20-179-5961-596101	Shellfish - Transfer to General Fund - OFU	45,000.00	45,000.00	0.00	0.00
20-179-5974-000000	Shellfish - Transfer to Marina Enterprise - OFU	0.00	5,000.00	0.00	-5,000.00
24-179-5580-000000	SHELLFISH RRA	140,849.21	51,079.92	1,250.00	91,019.29
4 Account(s) totaling:		185,849.21	101,114.92	1,250.00	85,984.29

Filter by: Segment 1: 20, 24
Segment 2: 179, 180

Parameters: Fiscal Year: 2024 Start Date: 7/1/2023 end: 6/30/2024

Ledger History - Allocated Trial Balance - Expenditure Ledger

Account Number		Allocated	Debits	Credits	Ending
20-179-5961-596101	Shellfish - Transfer to General Fund - OFU	25,000.00	25,000.00	0.00	0.00
24-179-5580-000000	SHELLFISH RRA	0.00	10,472.38	0.00	-10,472.38
2 Account(s) totaling:		25,000.00	35,472.38	0.00	-10,472.38

Filter by: Segment 1: 20, 24
Segment 2: 179, 180

Parameters: Fiscal Year: 2023 Start Date: 7/1/2022 end: 6/30/2023

Ledger History - Allocated Trial Balance - Revenue Ledger

Account Number		Allocated	Debits	Credits	Ending
20-179-4420-201002	SHELLFISH	0.00	4,613.02	37,073.95	32,460.93
24-179-4320-000000	SHELLFISH RRA	0.00	8,648.98	108,221.80	99,572.82
2 Account(s) totaling:		0.00	13,262.00	145,295.75	132,033.75

Filter by: Segment 1: 20, 24
Segment 2: 179, 180

Parameters: Fiscal Year: 2024 Start Date: 7/1/2023 end: 6/30/2024

Ledger History - Allocated Trial Balance - Revenue Ledger

Account Number		Allocated	Debits	Credits	Ending
20-179-4420-201002	SHELLFISH	0.00	25.00	18,864.99	18,839.99
24-179-4320-000000	SHELLFISH RRA	0.00	75.00	55,830.01	55,755.01
2 Account(s) totaling:		0.00	100.00	74,695.00	74,595.00

Kemp[']s] fence, thence southerly by his fence and across the road to the southwest corner of Duck Creek Bridge thence easterly by the south side of Duck Creek Bridge to the first mentioned bound. Sept. 18, 1833. [signed] Josiah Whitman, Surveyor of Land. Registered Barnstable County Courthouse, Oct. 2, 1833 Book 11, folio 238." (Town Clerk's files.)

NB: This certificate was copied by the Town Clerk in the Town Records for 1833, but the landing does not appear to have been laid out by the Selectmen or approved by a Town Meeting.

21. CAHOON'S HOLLOW ROAD LANDING. Map No. 20. No lot number. No area determined.

TM Jan. 17, 1856: Layout of Town way: Beginning at the west side of the County Road at a stake and stone running over land of Thomas Hawes S 47° W 9 rods and 12 links thence over same S 49° W 8 rods thence over same S 53° W 10 rods 16 links thence over same S 52° W 9 rods 21 links to land of John B. Newcomb thence over land of said Newcomb S 52° W 4 rods 4 links thence S 55° W 31 rods over the old road to the shore to be 25 feet wide and to lie on the northerly side of said courses."

22. TAYLOR (OLD PIER) ROAD LANDING. Map No. 22. No lot number. Area undetermined.

ATM Feb. 10, 1930, Art. 21: Voted: "To raise and appropriate the sum of Fifty (\$50.00) Dollars to complete the survey of what is known as Taylor Road to the Beach."

ATM Feb. 9, 1931, Art. 19: Voted: "to accept the layout and survey by the Selectmen of the extension of the Taylor Road from the residence of Margaret Colgate to the Beach, an approximate distance of one-eighth of a mile."

23. INDIAN NECK BREAKWATER LANDING. Map No. 22. No lot number. 2.8 acres.

Quit-Claim Deed: Constance S. Whitman, grantor, to the Town of Wellfleet, for consideration paid, Jan. 29, 1959, land in Indian Neck, bounded and described as follows: Beginning at the northerly side of a 40' way, said point also being the westerly corner of land of Wellfleet Center, Inc., thence S 29° 10' 40" W, 44.04' in range of said way to land of the grantor; thence N 57° 26' 40" W in range of the grantor, 311.40' to the mean high water mark of Wellfleet Harbor; thence N 66° 30' 00" W in range of land of the grantor to the channel of Wellfleet Harbor; thence northeasterly and easterly by said channel until the point of beginning bears S 2° 09' 40" W; thence S 2° 09' 40" W to mean high water; thence S 2° 09' 40" W 625' mol to the point of beginning, containing an area above mean high water of 2.8 acres mol."

ATM Feb. 8, 1960. Art. 33: Voted: "That the Town accept a deed from Constance Whitman as a gift of land on the northwesterly portion of Indian Neck for a town parking lot and bathing beach. It was further voted that a rising vote of thanks be given to Mrs. Whitman for her generosity, and instructions given to the Town Clerk to convey the appreciation of the Town to Mrs. Whitman."

Sketch Plan: Schofield Brothers, Dec. 1961 (Slade Assoc. files.)