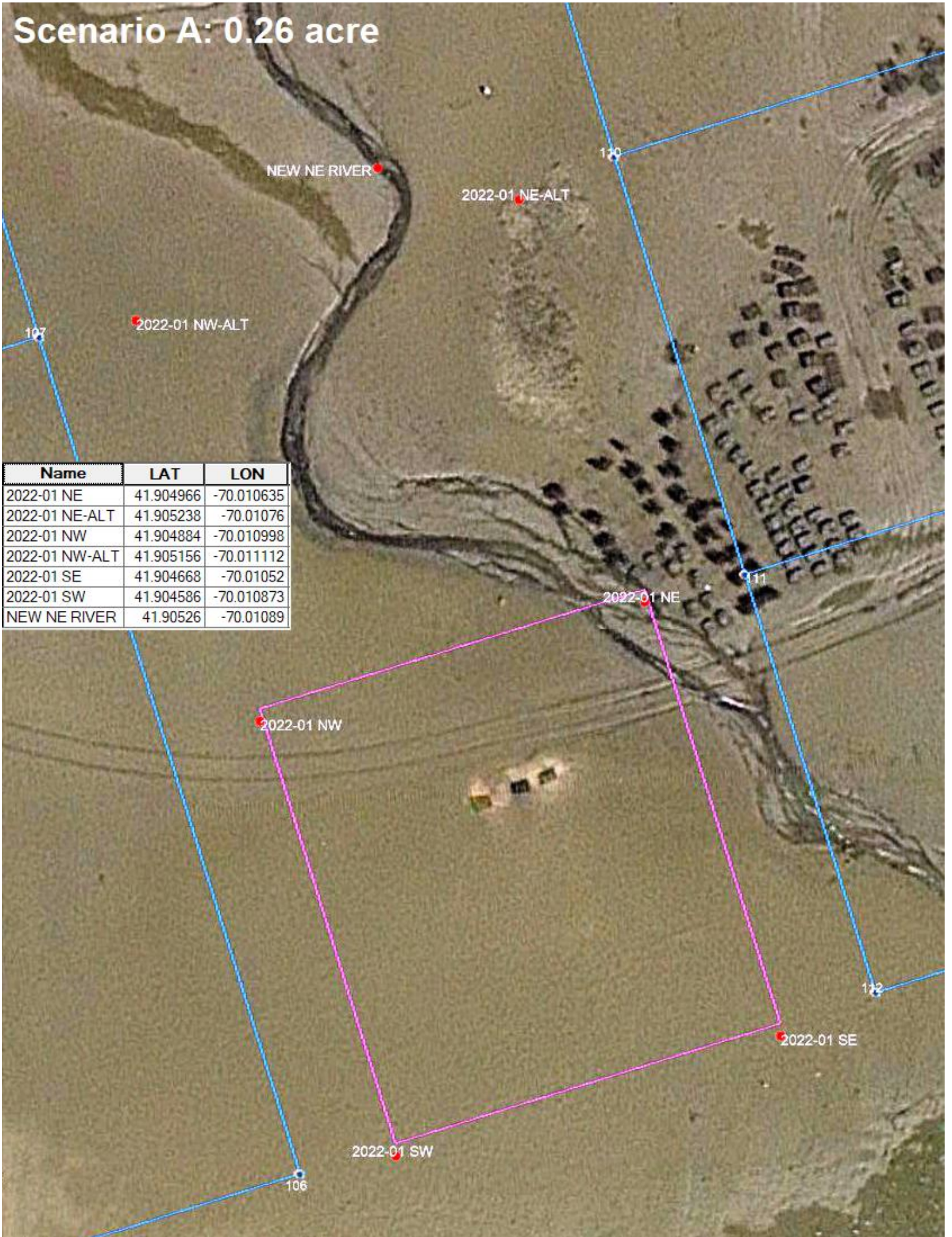
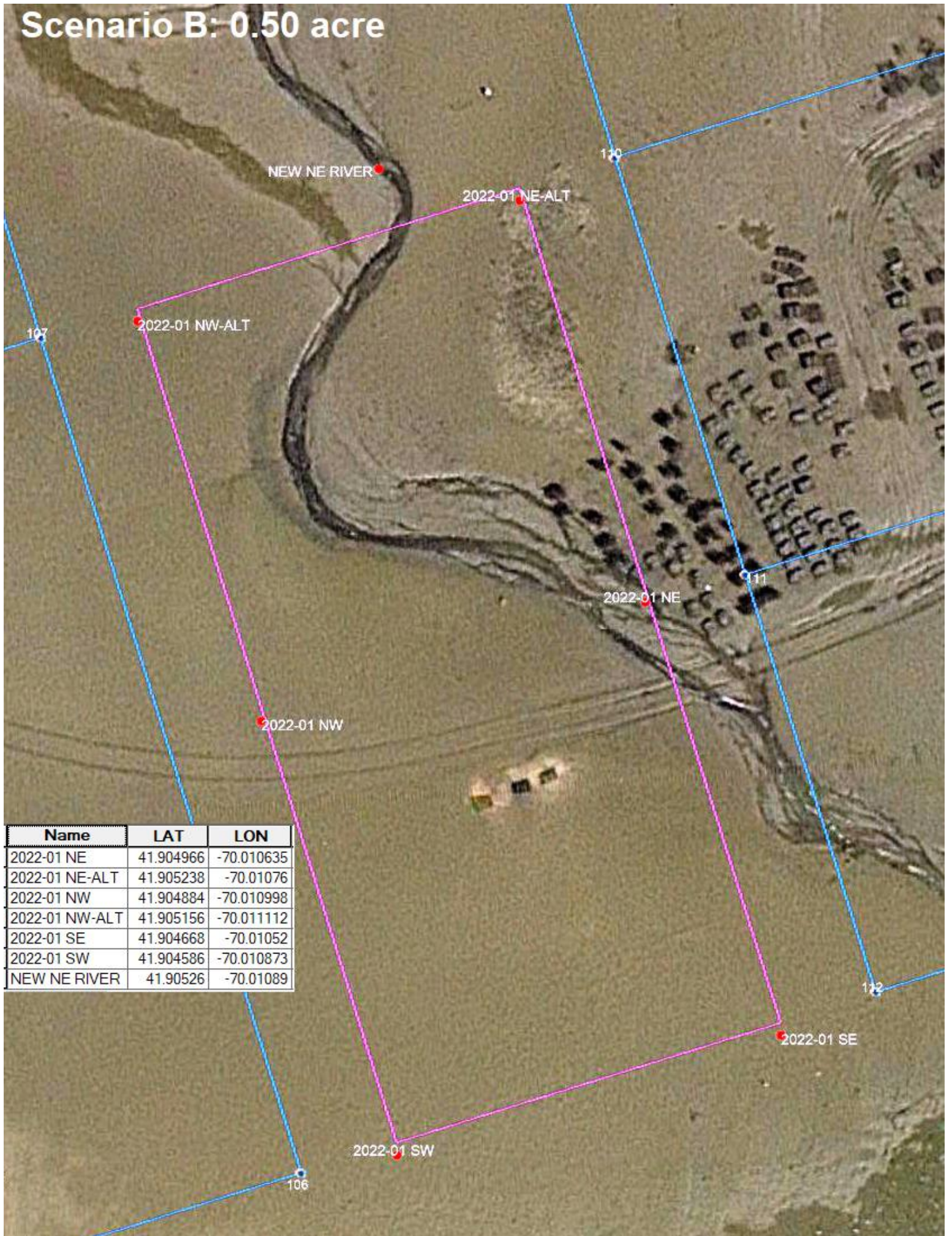


Scenario A: 0.26 acre



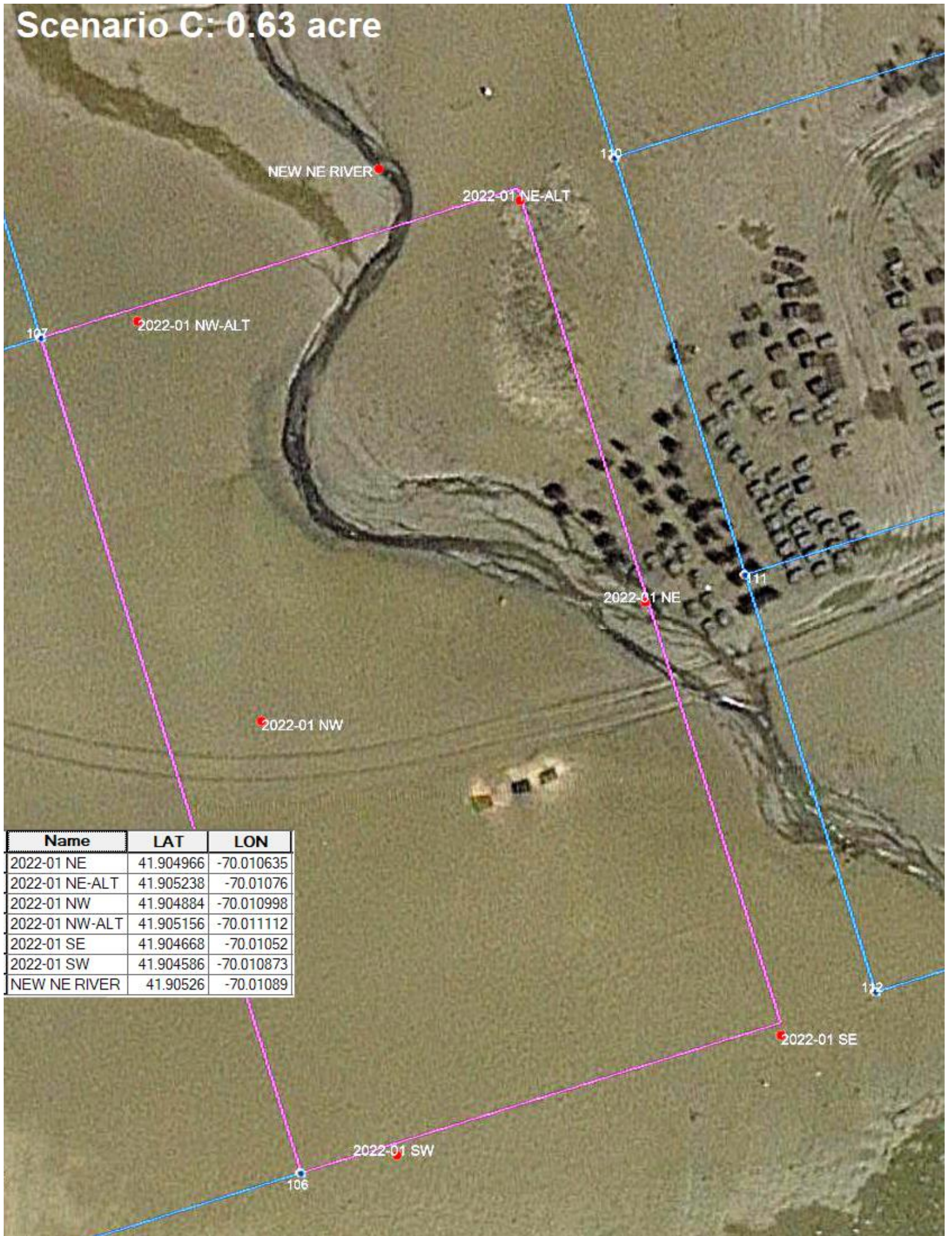
Name	LAT	LON
2022-01 NE	41.904966	-70.010635
2022-01 NE-ALT	41.905238	-70.01076
2022-01 NW	41.904884	-70.010998
2022-01 NW-ALT	41.905156	-70.011112
2022-01 SE	41.904668	-70.01052
2022-01 SW	41.904586	-70.010873
NEW NE RIVER	41.90526	-70.01089

Scenario B: 0.50 acre



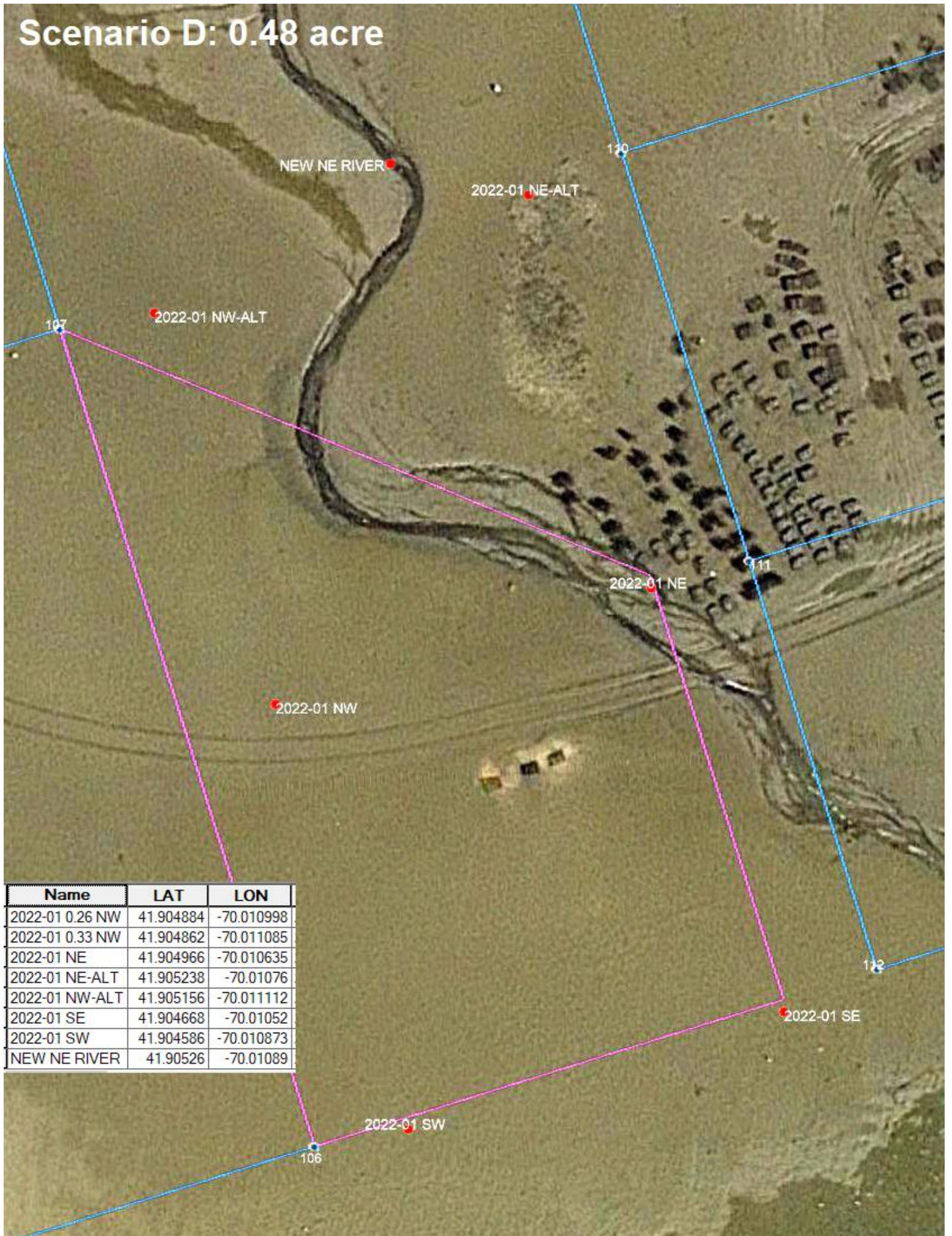
Name	LAT	LON
2022-01 NE	41.904966	-70.010635
2022-01 NE-ALT	41.905238	-70.01076
2022-01 NW	41.904884	-70.010998
2022-01 NW-ALT	41.905156	-70.011112
2022-01 SE	41.904668	-70.01052
2022-01 SW	41.904586	-70.010873
NEW NE RIVER	41.90526	-70.01089

Scenario C: 0.63 acre



Name	LAT	LON
2022-01 NE	41.904966	-70.010635
2022-01 NE-ALT	41.905238	-70.01076
2022-01 NW	41.904884	-70.010998
2022-01 NW-ALT	41.905156	-70.011112
2022-01 SE	41.904668	-70.01052
2022-01 SW	41.904586	-70.010873
NEW NE RIVER	41.90526	-70.01089

Scenario D: 0.48 acre



Name	LAT	LON
2022-01 0.26 NW	41.904884	-70.010998
2022-01 0.33 NW	41.904862	-70.011085
2022-01 NE	41.904966	-70.010635
2022-01 NE-ALT	41.905238	-70.01076
2022-01 NW-ALT	41.905156	-70.011112
2022-01 SE	41.904668	-70.01052
2022-01 SW	41.904586	-70.010873
NEW NE RIVER	41.90526	-70.01089

Scenario E: 0.33 acre

