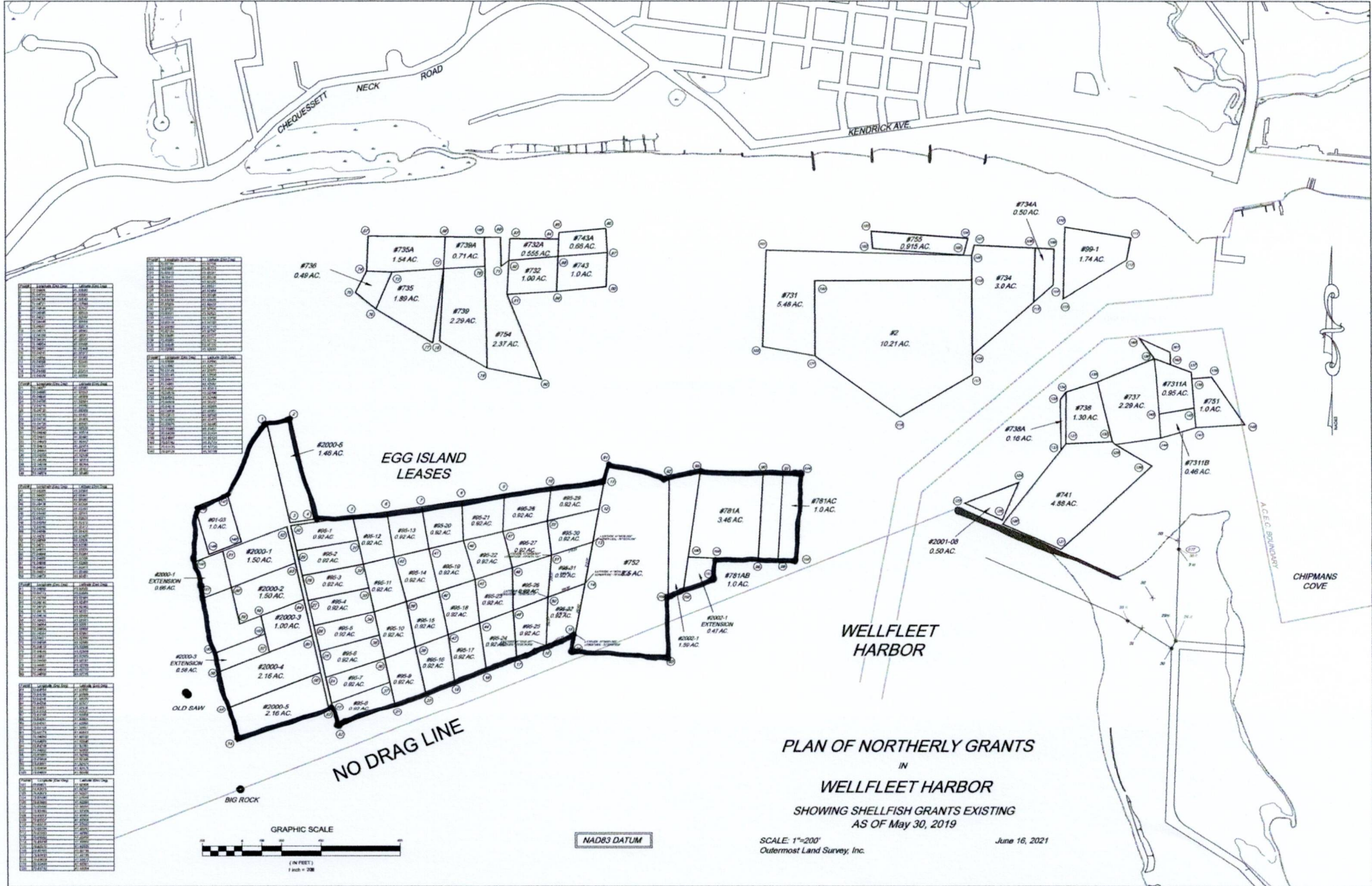


# HELLFISH DEPT. ORIGINAL PROPOSAL, APPROVED BY SAB 3/9/2023



GRANT #	ACREAGE	DATE	STATUS
#736	0.49		
#735	1.89		
#739	2.29		
#734	3.0		
#734A	0.50		
#735A	1.54		
#739A	0.71		
#732A	0.555		
#743A	0.68		
#743	1.0		
#754	2.37		
#731	5.46		
#2	10.21		
#734A	0.50		
#734	3.0		
#731A	0.95		
#731	1.0		
#737	2.29		
#738	1.30		
#738A	0.16		
#741	4.58		
#731B	0.46		
#781A	3.46		
#781AC	1.0		
#781AB	1.0		
#2001-00	0.50		
#2000-5	1.46		
#2000-1	1.50		
#2000-2	1.50		
#2000-3	1.00		
#2000-4	2.16		
#2000-5	2.16		

GRANT #	ACREAGE	DATE	STATUS
#736	0.49		
#735	1.89		
#739	2.29		
#734	3.0		
#734A	0.50		
#735A	1.54		
#739A	0.71		
#732A	0.555		
#743A	0.68		
#743	1.0		
#754	2.37		
#731	5.46		
#2	10.21		
#734A	0.50		
#734	3.0		
#731A	0.95		
#731	1.0		
#737	2.29		
#738	1.30		
#738A	0.16		
#741	4.58		
#731B	0.46		
#781A	3.46		
#781AC	1.0		
#781AB	1.0		
#2001-00	0.50		
#2000-5	1.46		
#2000-1	1.50		
#2000-2	1.50		
#2000-3	1.00		
#2000-4	2.16		
#2000-5	2.16		

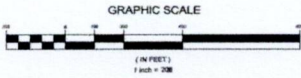
GRANT #	ACREAGE	DATE	STATUS
#736	0.49		
#735	1.89		
#739	2.29		
#734	3.0		
#734A	0.50		
#735A	1.54		
#739A	0.71		
#732A	0.555		
#743A	0.68		
#743	1.0		
#754	2.37		
#731	5.46		
#2	10.21		
#734A	0.50		
#734	3.0		
#731A	0.95		
#731	1.0		
#737	2.29		
#738	1.30		
#738A	0.16		
#741	4.58		
#731B	0.46		
#781A	3.46		
#781AC	1.0		
#781AB	1.0		
#2001-00	0.50		
#2000-5	1.46		
#2000-1	1.50		
#2000-2	1.50		
#2000-3	1.00		
#2000-4	2.16		
#2000-5	2.16		

GRANT #	ACREAGE	DATE	STATUS
#736	0.49		
#735	1.89		
#739	2.29		
#734	3.0		
#734A	0.50		
#735A	1.54		
#739A	0.71		
#732A	0.555		
#743A	0.68		
#743	1.0		
#754	2.37		
#731	5.46		
#2	10.21		
#734A	0.50		
#734	3.0		
#731A	0.95		
#731	1.0		
#737	2.29		
#738	1.30		
#738A	0.16		
#741	4.58		
#731B	0.46		
#781A	3.46		
#781AC	1.0		
#781AB	1.0		
#2001-00	0.50		
#2000-5	1.46		
#2000-1	1.50		
#2000-2	1.50		
#2000-3	1.00		
#2000-4	2.16		
#2000-5	2.16		

PLAN OF NORTHERLY GRANTS  
IN  
WELLFLEET HARBOR  
SHOWING SHELLFISH GRANTS EXISTING  
AS OF May 30, 2019

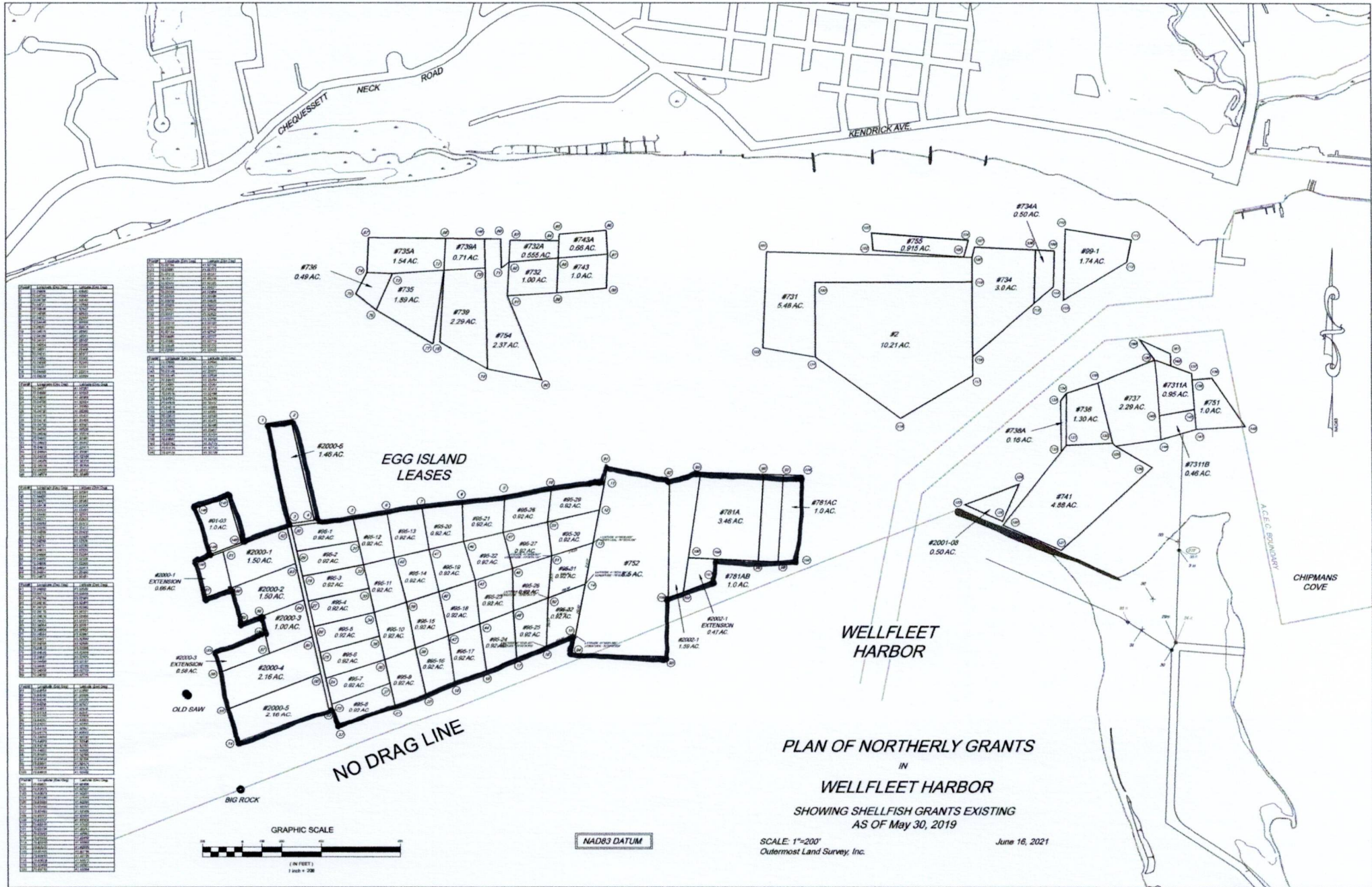
SCALE: 1"=200'  
Outermost Land Survey, Inc.

June 16, 2021



NAD83 DATUM

# SELECTBOARD APPROVED 4/4/2023 IN REGULATIONS



Lot No.	Area (Ac.)	Grant No.	Area (Ac.)
736	0.49	736	0.49
735	1.89	735	1.89
739	2.29	739	2.29
754	2.37	754	2.37
730A	0.55	730A	0.55
732	1.00	732	1.00
743	1.0	743	1.0
743A	0.68	743A	0.68
739A	0.71	739A	0.71
735A	1.54	735A	1.54
721	5.48	721	5.48
734	3.0	734	3.0
734A	0.50	734A	0.50
755	0.915	755	0.915
899-1	1.74	899-1	1.74
7311A	0.95	7311A	0.95
7311B	0.46	7311B	0.46
737	2.29	737	2.29
738	1.30	738	1.30
738A	0.16	738A	0.16
741	4.88	741	4.88
781A	3.46	781A	3.46
781AB	1.0	781AB	1.0
781AC	1.0	781AC	1.0
2000-5	1.46	2000-5	1.46
2000-1	1.50	2000-1	1.50
2000-2	1.50	2000-2	1.50
2000-3	1.00	2000-3	1.00
2000-4	2.16	2000-4	2.16
2000-5	2.16	2000-5	2.16
2001-08	0.50	2001-08	0.50
2001-09	0.47	2001-09	0.47
2001-10	1.39	2001-10	1.39
2001-11	0.88	2001-11	0.88
2001-12	0.82	2001-12	0.82
2001-13	0.82	2001-13	0.82
2001-14	0.82	2001-14	0.82
2001-15	0.82	2001-15	0.82
2001-16	0.82	2001-16	0.82
2001-17	0.82	2001-17	0.82
2001-18	0.82	2001-18	0.82
2001-19	0.82	2001-19	0.82
2001-20	0.82	2001-20	0.82
2001-21	0.82	2001-21	0.82
2001-22	0.82	2001-22	0.82
2001-23	0.82	2001-23	0.82
2001-24	0.82	2001-24	0.82
2001-25	0.82	2001-25	0.82
2001-26	0.82	2001-26	0.82
2001-27	0.82	2001-27	0.82
2001-28	0.82	2001-28	0.82
2001-29	0.82	2001-29	0.82
2001-30	0.82	2001-30	0.82
2001-31	0.82	2001-31	0.82
2001-32	0.82	2001-32	0.82
2001-33	0.82	2001-33	0.82
2001-34	0.82	2001-34	0.82
2001-35	0.82	2001-35	0.82
2001-36	0.82	2001-36	0.82
2001-37	0.82	2001-37	0.82
2001-38	0.82	2001-38	0.82
2001-39	0.82	2001-39	0.82
2001-40	0.82	2001-40	0.82
2001-41	0.82	2001-41	0.82
2001-42	0.82	2001-42	0.82
2001-43	0.82	2001-43	0.82
2001-44	0.82	2001-44	0.82
2001-45	0.82	2001-45	0.82
2001-46	0.82	2001-46	0.82
2001-47	0.82	2001-47	0.82
2001-48	0.82	2001-48	0.82
2001-49	0.82	2001-49	0.82
2001-50	0.82	2001-50	0.82
2001-51	0.82	2001-51	0.82
2001-52	0.82	2001-52	0.82
2001-53	0.82	2001-53	0.82
2001-54	0.82	2001-54	0.82
2001-55	0.82	2001-55	0.82
2001-56	0.82	2001-56	0.82
2001-57	0.82	2001-57	0.82
2001-58	0.82	2001-58	0.82
2001-59	0.82	2001-59	0.82
2001-60	0.82	2001-60	0.82
2001-61	0.82	2001-61	0.82
2001-62	0.82	2001-62	0.82
2001-63	0.82	2001-63	0.82
2001-64	0.82	2001-64	0.82
2001-65	0.82	2001-65	0.82
2001-66	0.82	2001-66	0.82
2001-67	0.82	2001-67	0.82
2001-68	0.82	2001-68	0.82
2001-69	0.82	2001-69	0.82
2001-70	0.82	2001-70	0.82
2001-71	0.82	2001-71	0.82
2001-72	0.82	2001-72	0.82
2001-73	0.82	2001-73	0.82
2001-74	0.82	2001-74	0.82
2001-75	0.82	2001-75	0.82
2001-76	0.82	2001-76	0.82
2001-77	0.82	2001-77	0.82
2001-78	0.82	2001-78	0.82
2001-79	0.82	2001-79	0.82
2001-80	0.82	2001-80	0.82
2001-81	0.82	2001-81	0.82
2001-82	0.82	2001-82	0.82
2001-83	0.82	2001-83	0.82
2001-84	0.82	2001-84	0.82
2001-85	0.82	2001-85	0.82
2001-86	0.82	2001-86	0.82
2001-87	0.82	2001-87	0.82
2001-88	0.82	2001-88	0.82
2001-89	0.82	2001-89	0.82
2001-90	0.82	2001-90	0.82
2001-91	0.82	2001-91	0.82
2001-92	0.82	2001-92	0.82
2001-93	0.82	2001-93	0.82
2001-94	0.82	2001-94	0.82
2001-95	0.82	2001-95	0.82
2001-96	0.82	2001-96	0.82
2001-97	0.82	2001-97	0.82
2001-98	0.82	2001-98	0.82
2001-99	0.82	2001-99	0.82
2001-100	0.82	2001-100	0.82

# IDEA FOR CHANGES TO SELECTBOARD APPROVED OUTLINE (see arrows; one survey point needed)

