

The earliest image on our version of Google Earth is from 1985; however, the photo does not have high enough resolution to see the grant area/creek in question. The oldest image used in this document is from 1995. The most recent images on Google Earth are from 2021; however, images from 2018-2021 were taken at high tide when the grant area/creek are not visible. The most recent photo used in this document is from 2017. The screen shots were taken from approximately the same “distance” above the area, so changes seen between the years should be of similar scale. Screenshots for 2008 and prior years are about 36 feet closer than those 2010 and older.



04/2017



05/2016

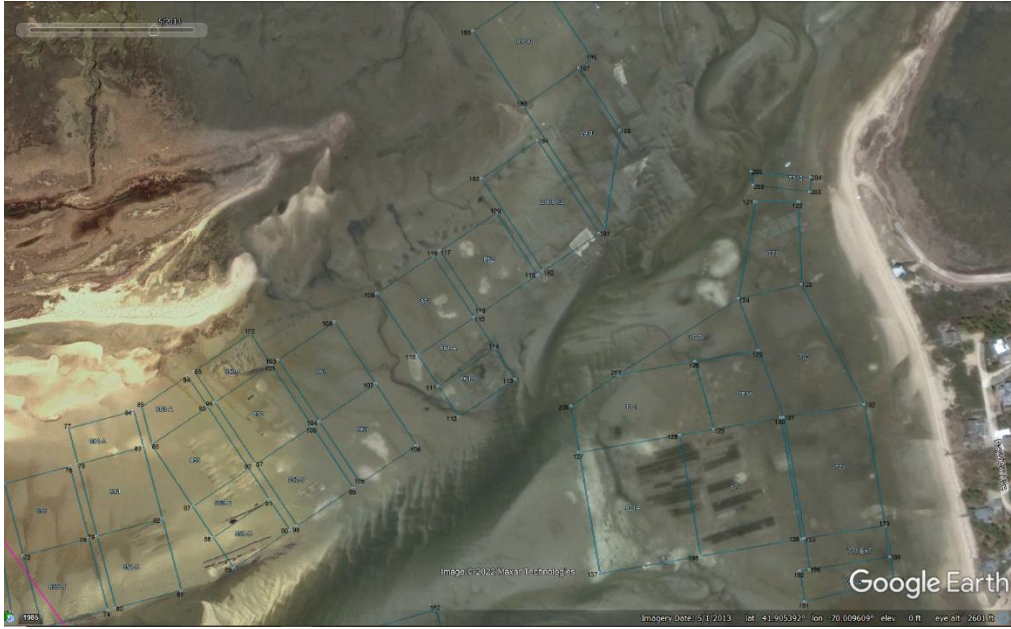


05/2015



06/2014





05/2013



03/2012

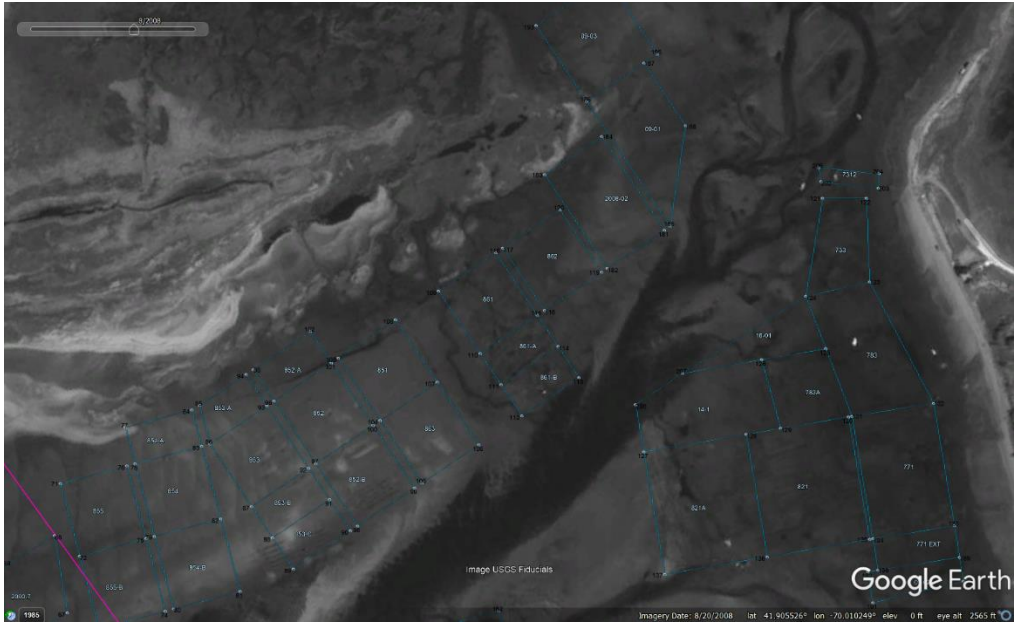


12/2010

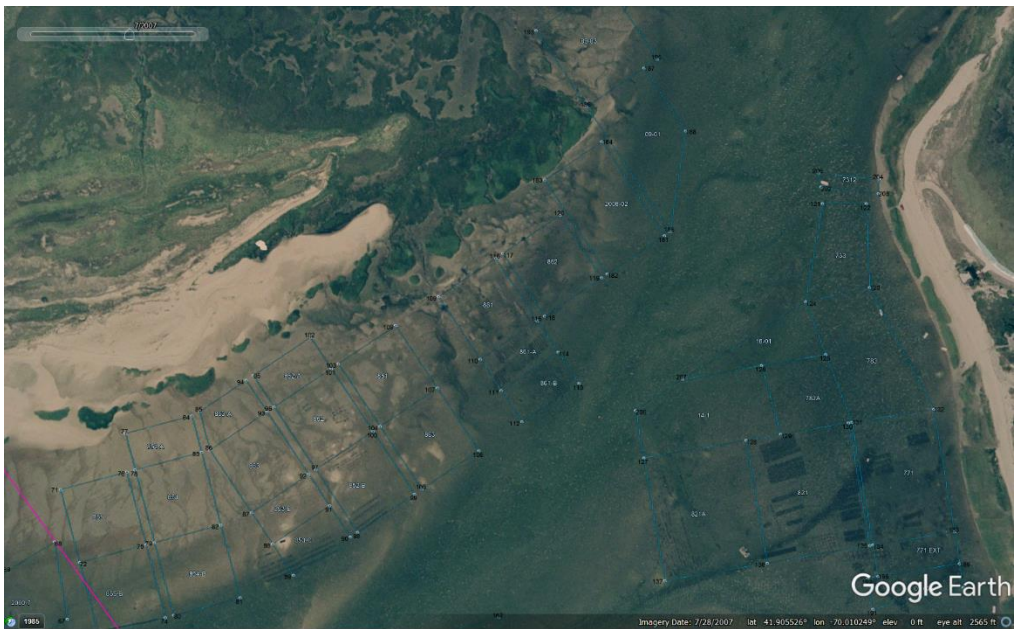


05/2010





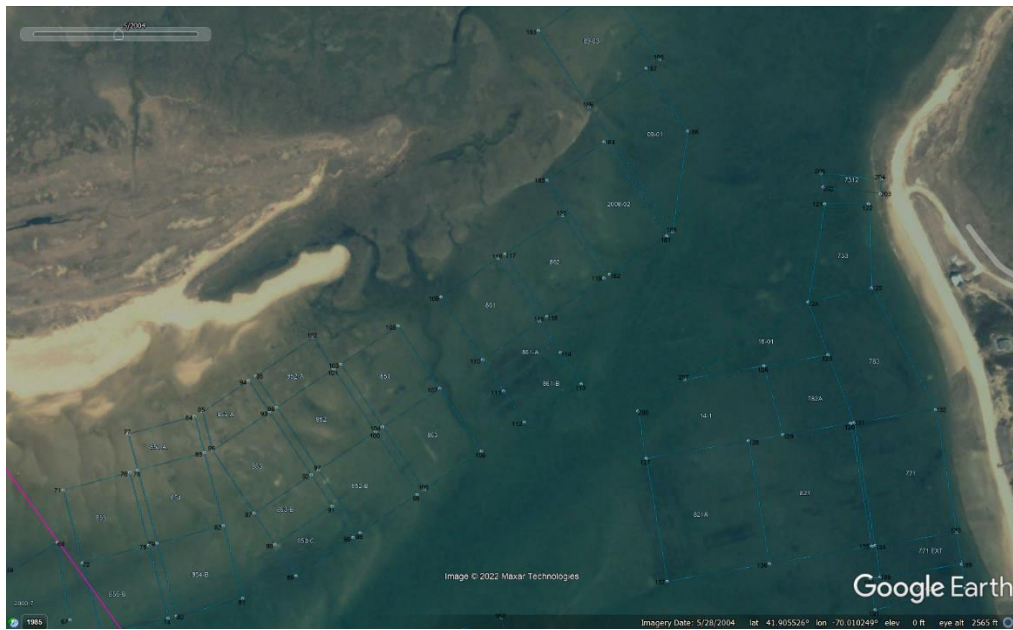
08/2008



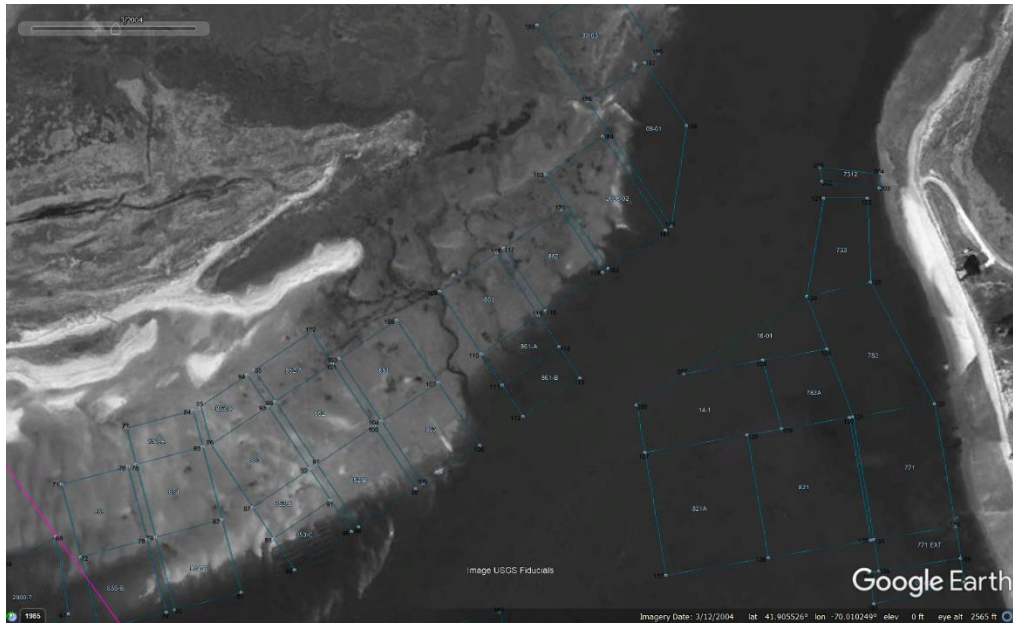
07/2007



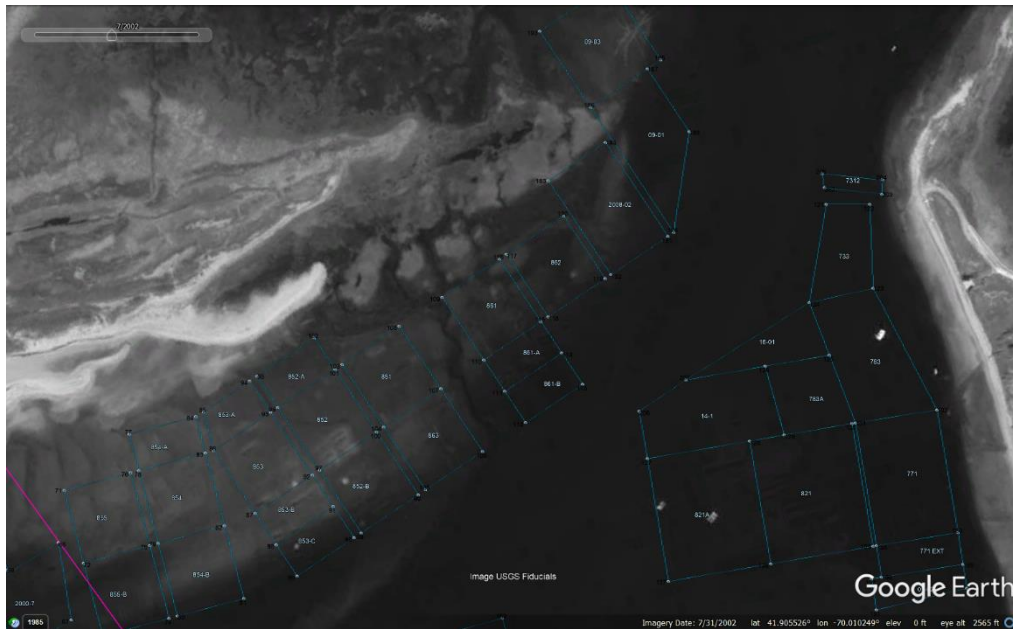
04/2005 Though this is not a low tide image, I thought the divide the creek makes on that part of Indian Neck is interesting.



05/2004



03/2004

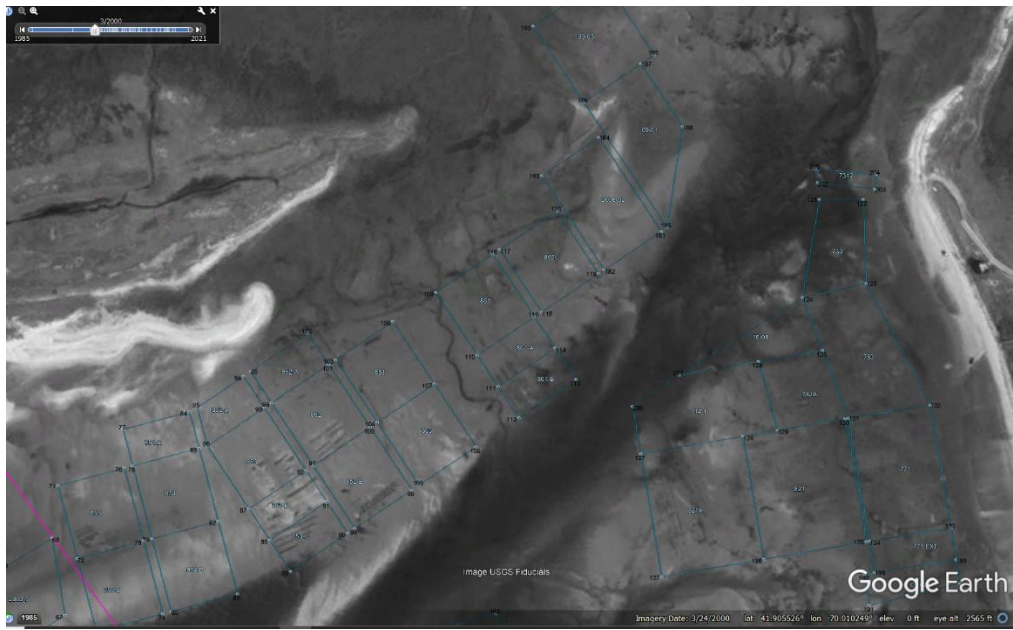


07/2002





12/2001



03/2000





04/1995