

Touloukian Touloukian Inc.

Architecture + Urban Design

A 151 Pearl Street, 2nd Floor  
Boston, Massachusetts 02110

T +1 617 526 0884

# Town of Wellfleet, MA — Baker Field Restrooms

07 October 2014

Context





Context





Context





Context





Context





Context



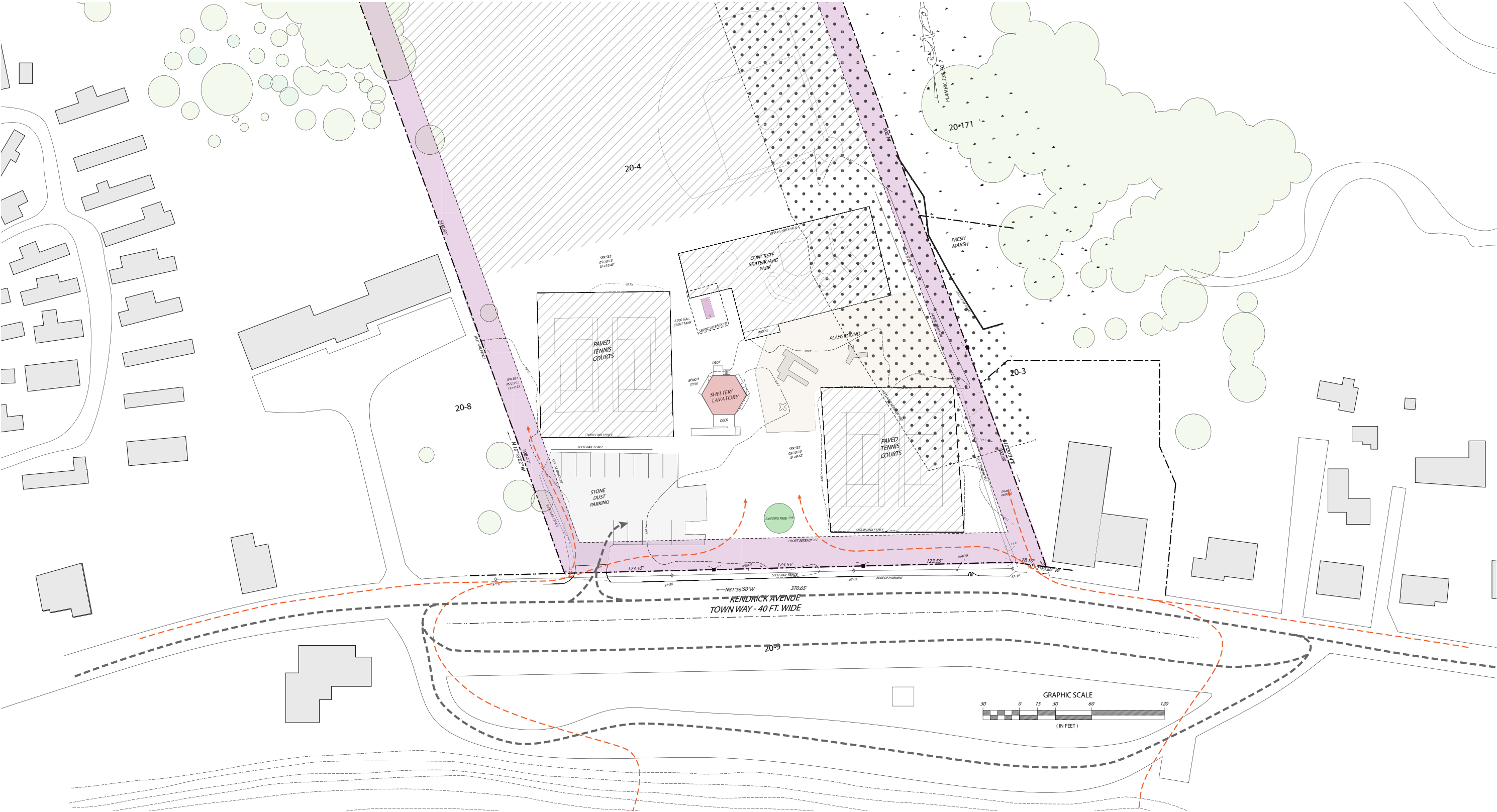


Site Planning



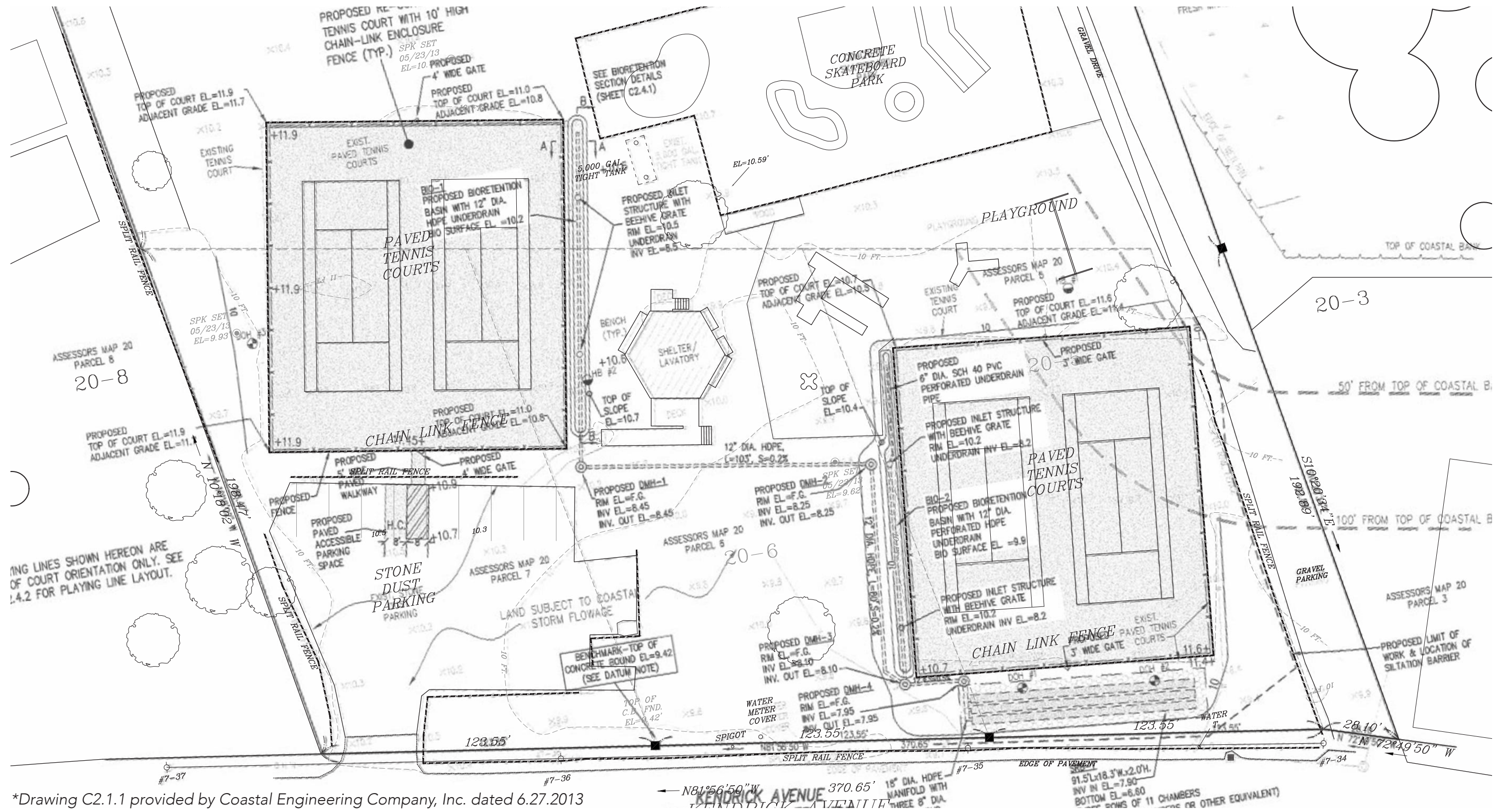


Site Conditions





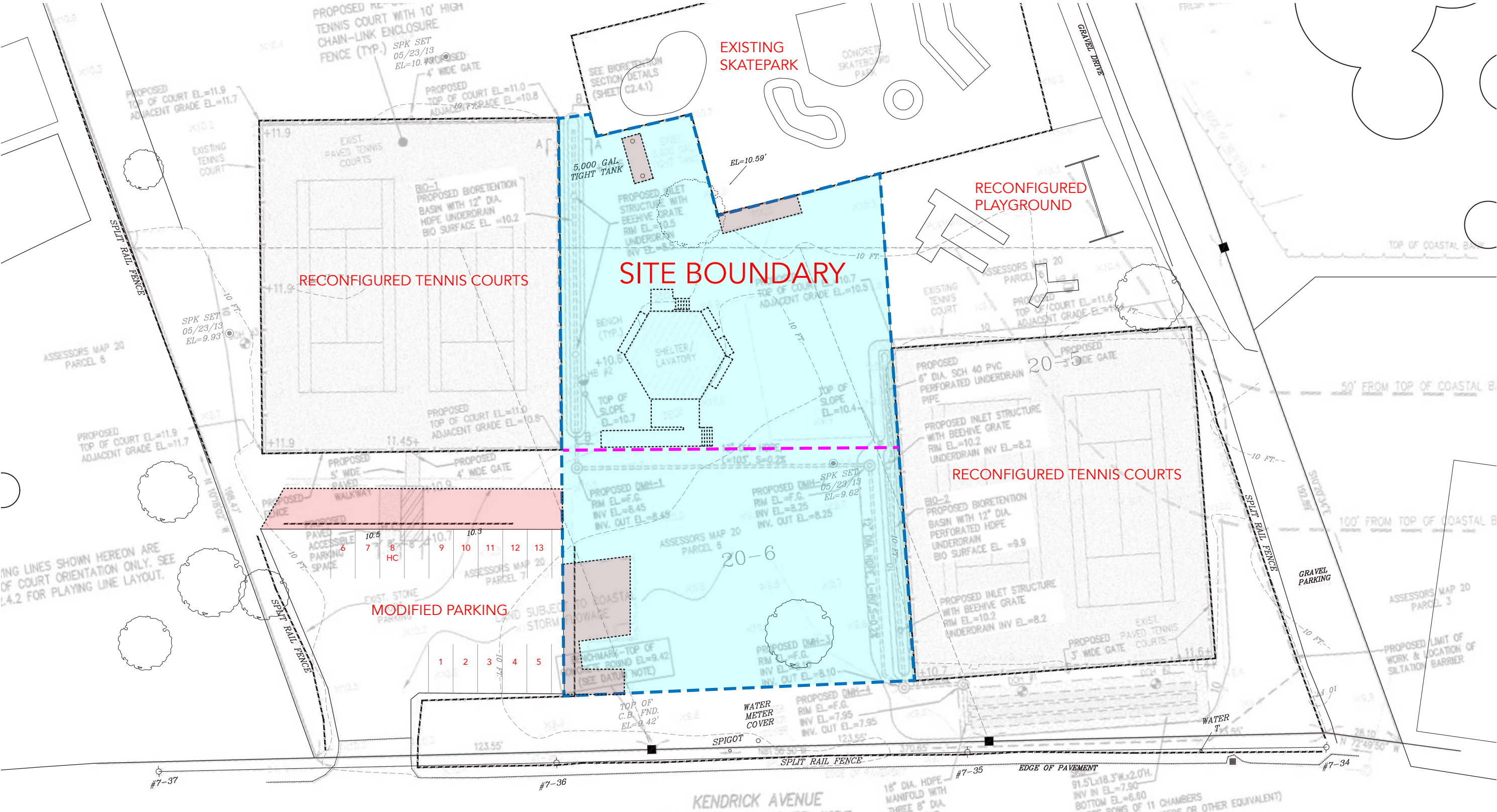
# Proposed Site Plan



\*Drawing C2.1.1 provided by Coastal Engineering Company, Inc. dated 6.27.2013



Site Modifications and Constraints





## Program

### Original Program:

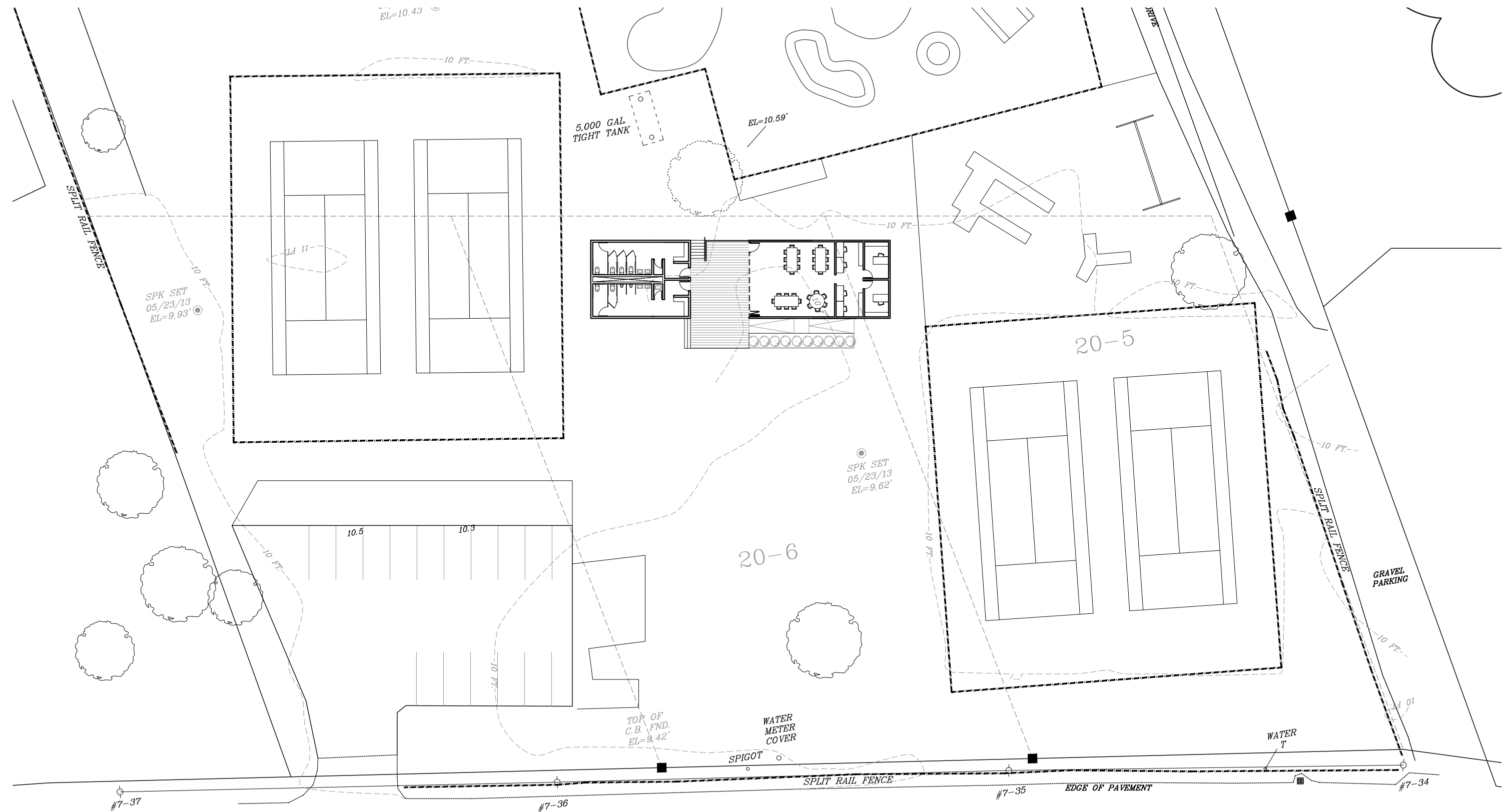
- Men's Room:
  - 2 hand sinks
  - Changing area
  - 2 waterless urinals
  - 2 foam flush toilets
- Women's Room
  - 2 hand sinks
  - Changing area
  - 4 foam flush toilets
  - 1 janitor sink to be in either men's or women's restroom
- Stage
- Grey water system below restrooms

### Additional Program:

- Large open office space (5-6 people)
- Small office/private conversation space (4 people)
- Conference / Activity (20 children, 4 staff)
- Increased storage space (currently 300sf)
- Deck area
  - Minimum – parking side of park
  - Preferred – continuous deck around entire building

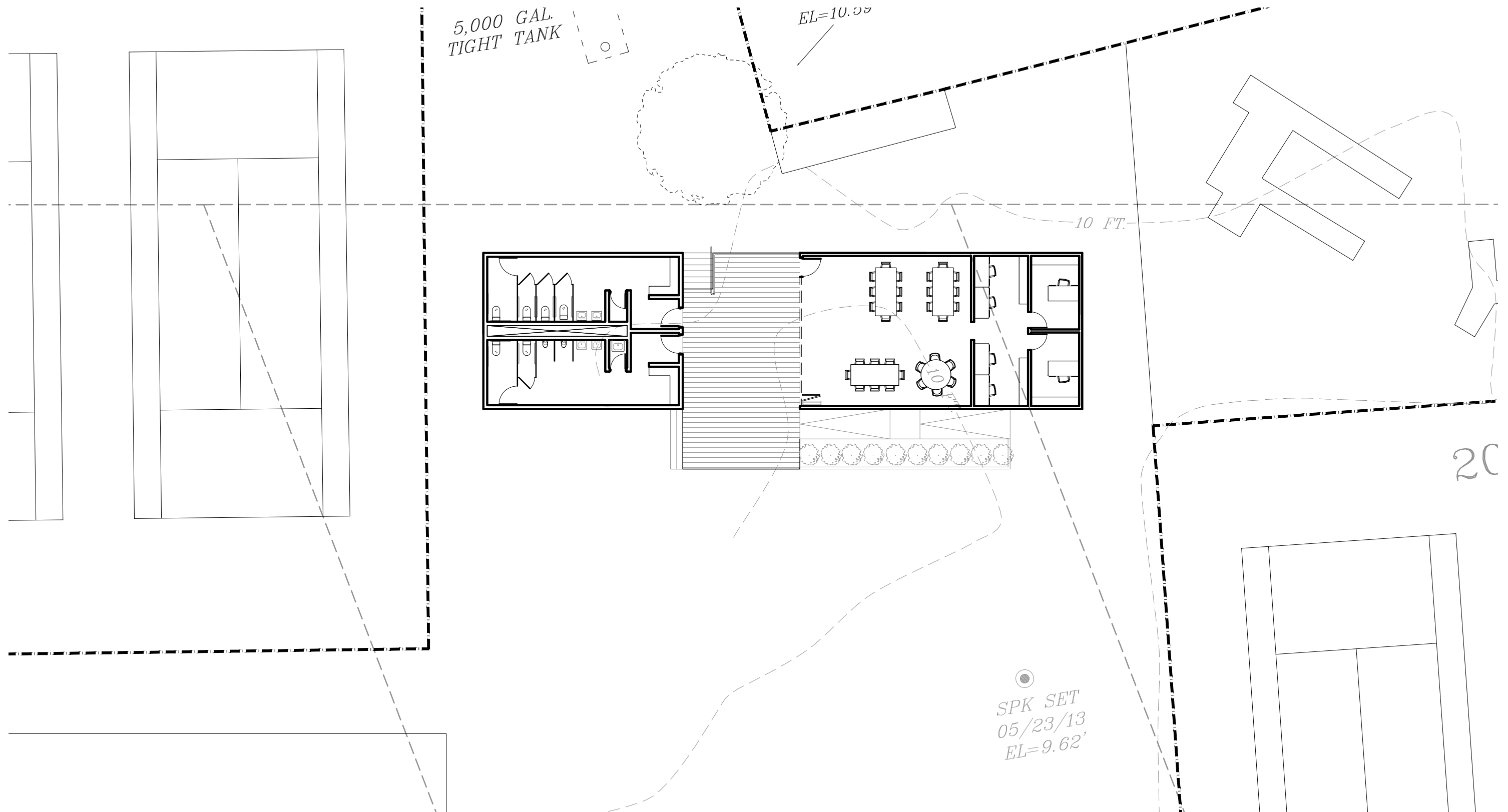


## Option 1


$$1/32'' = 1'0''$$



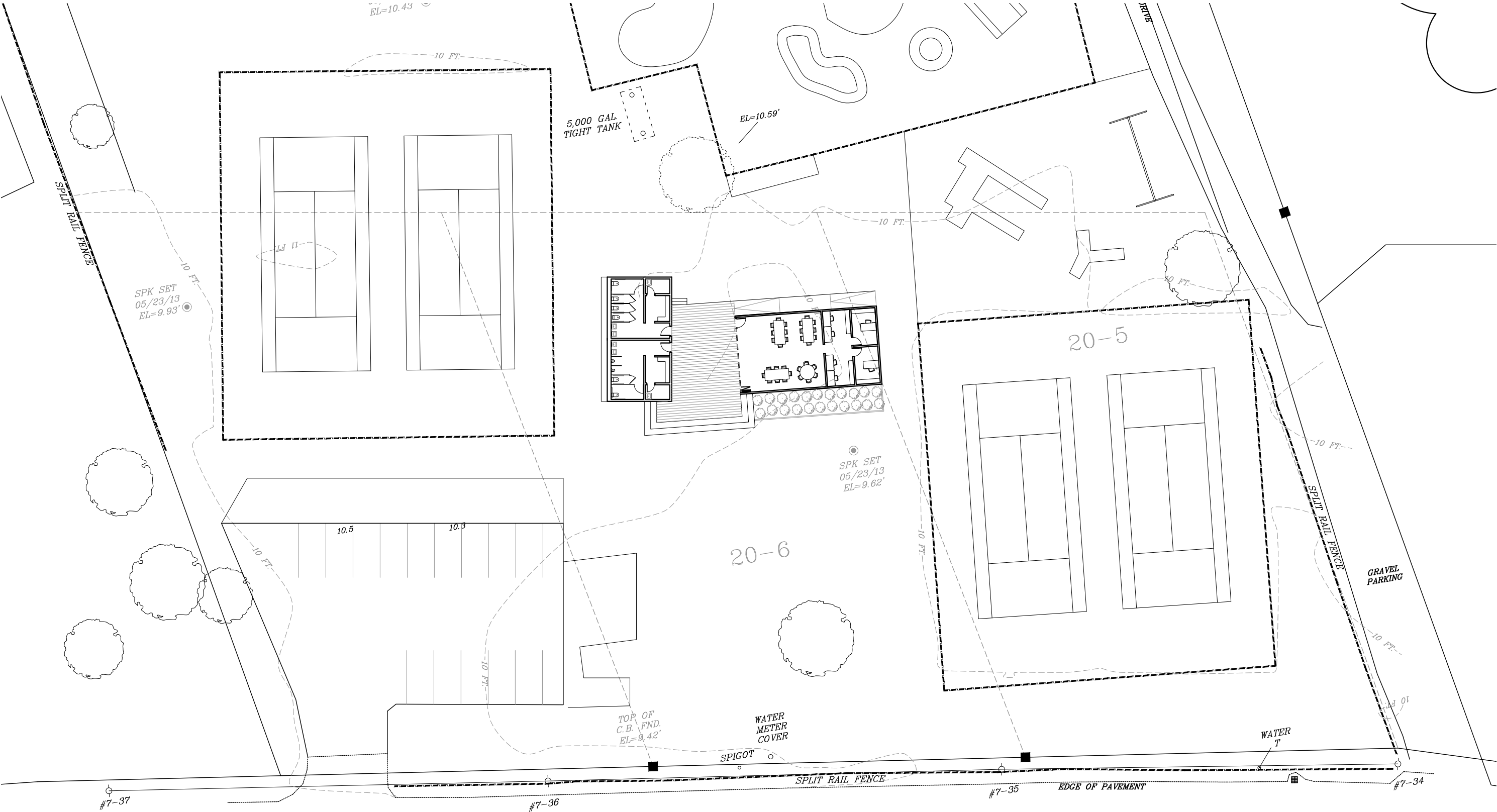
## Option 1



**1/16" = 1'0"**



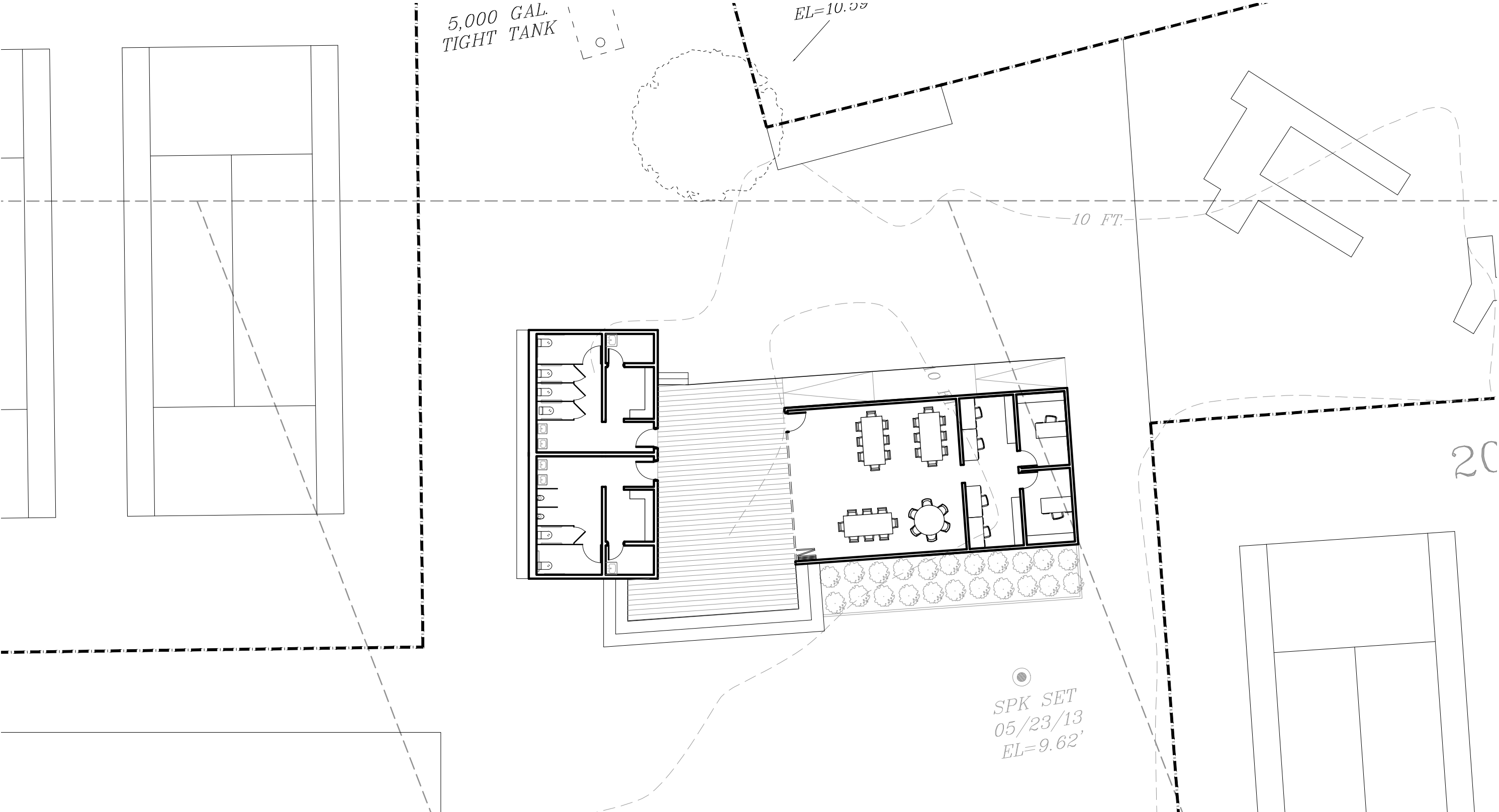
Option 2



1/32" = 1'0"

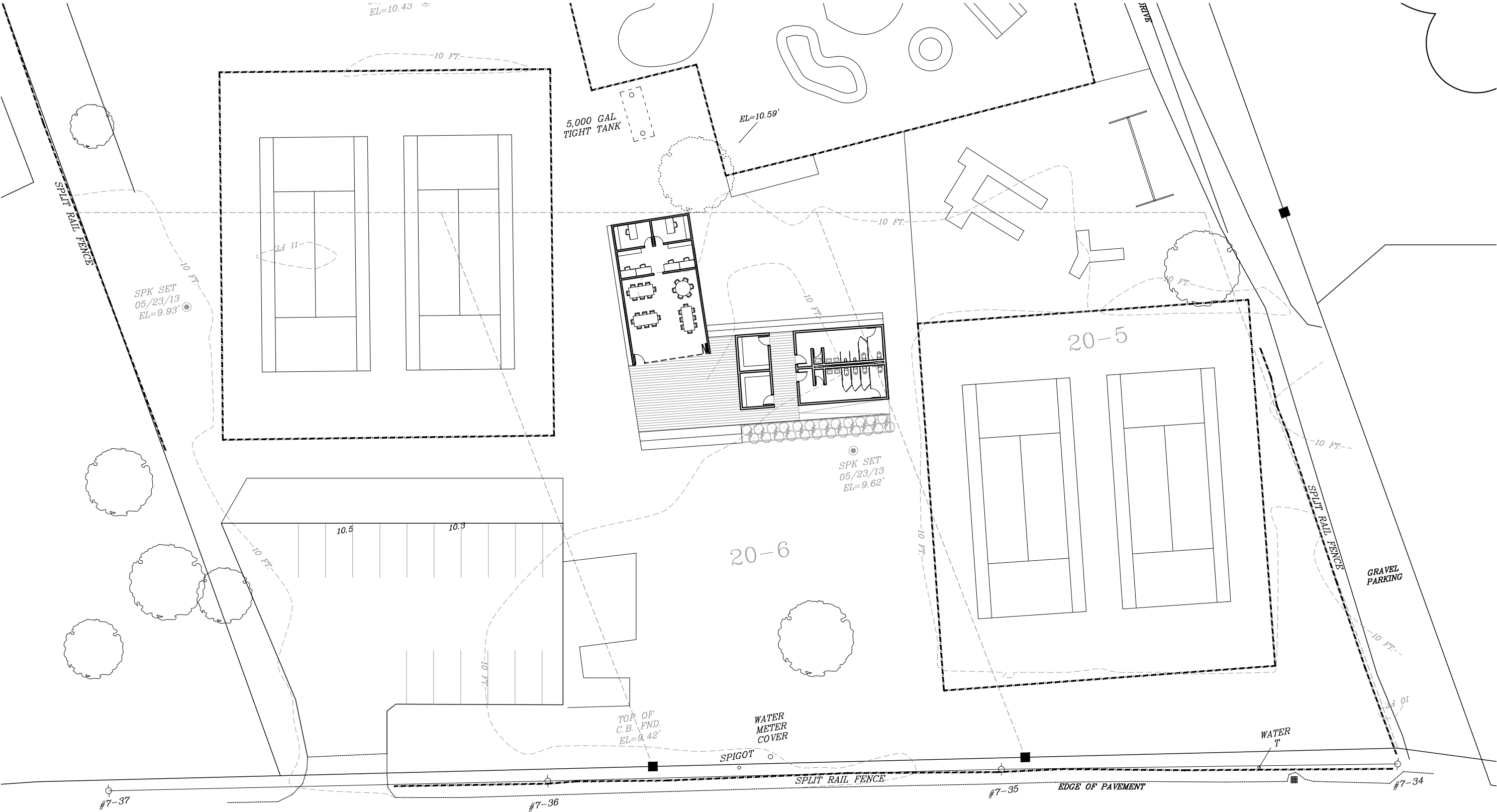


Option 2





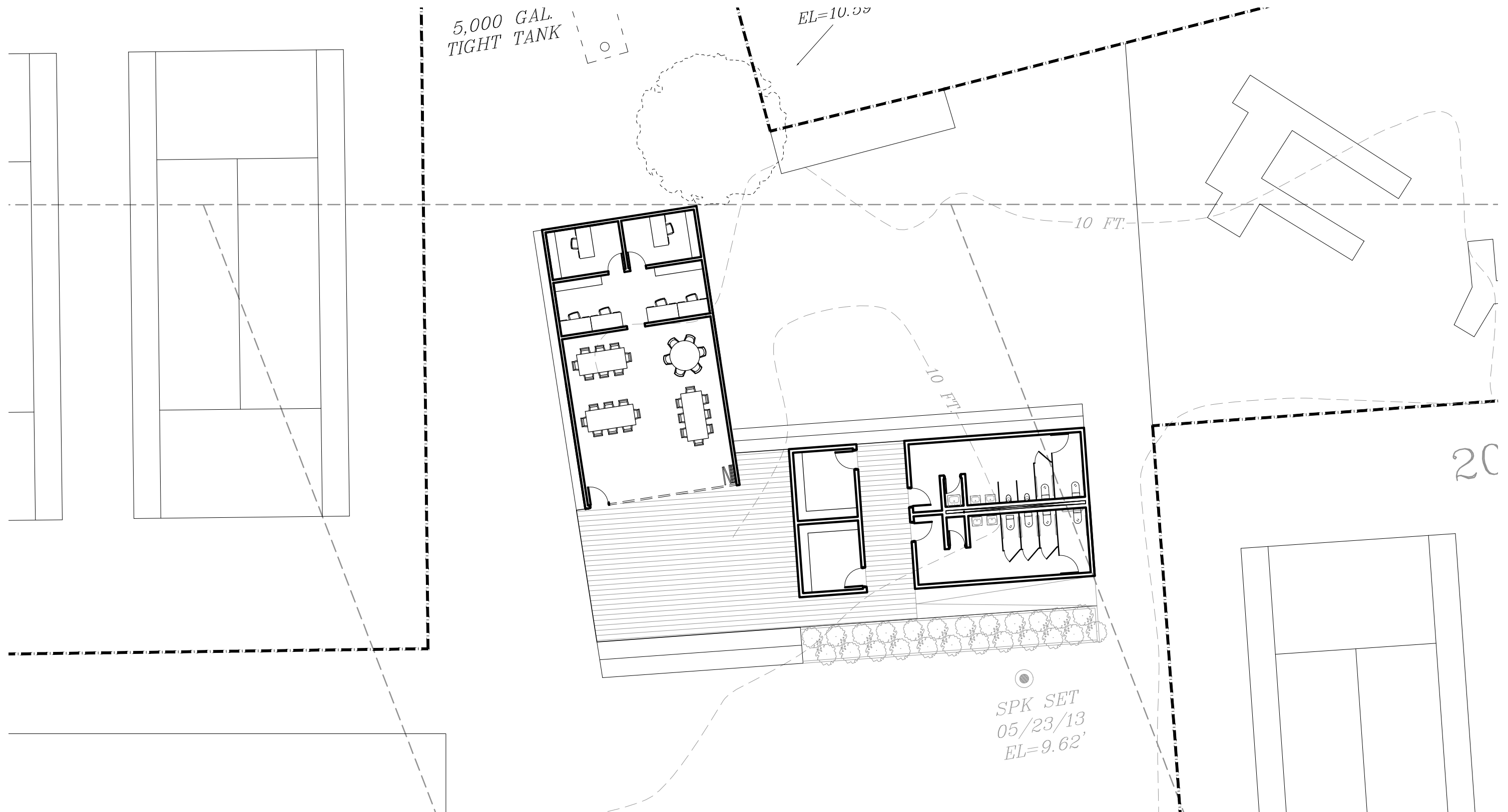
Option 3



1/32" = 1'0"



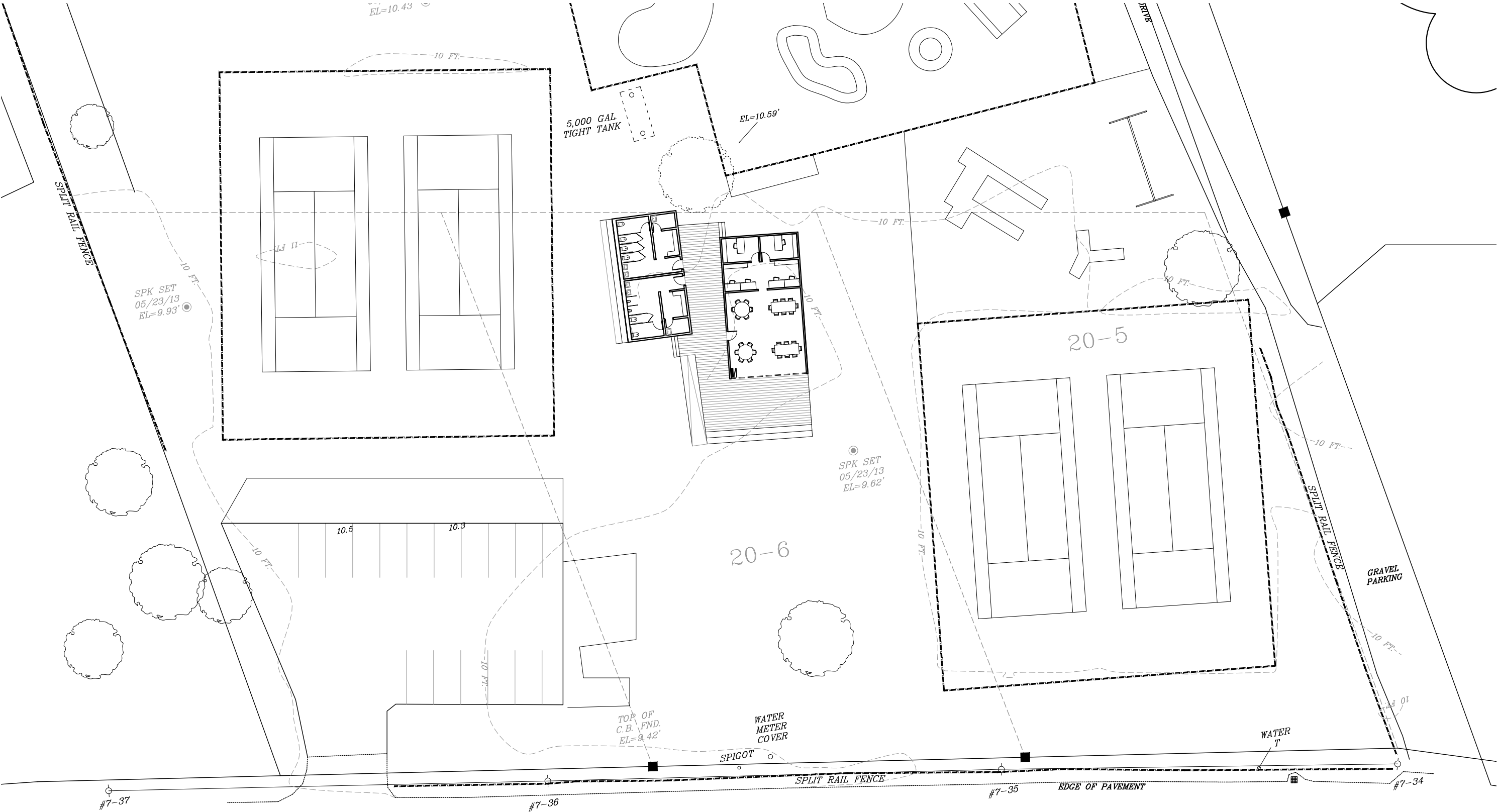
### Option 3



**1/16" = 1'0"**

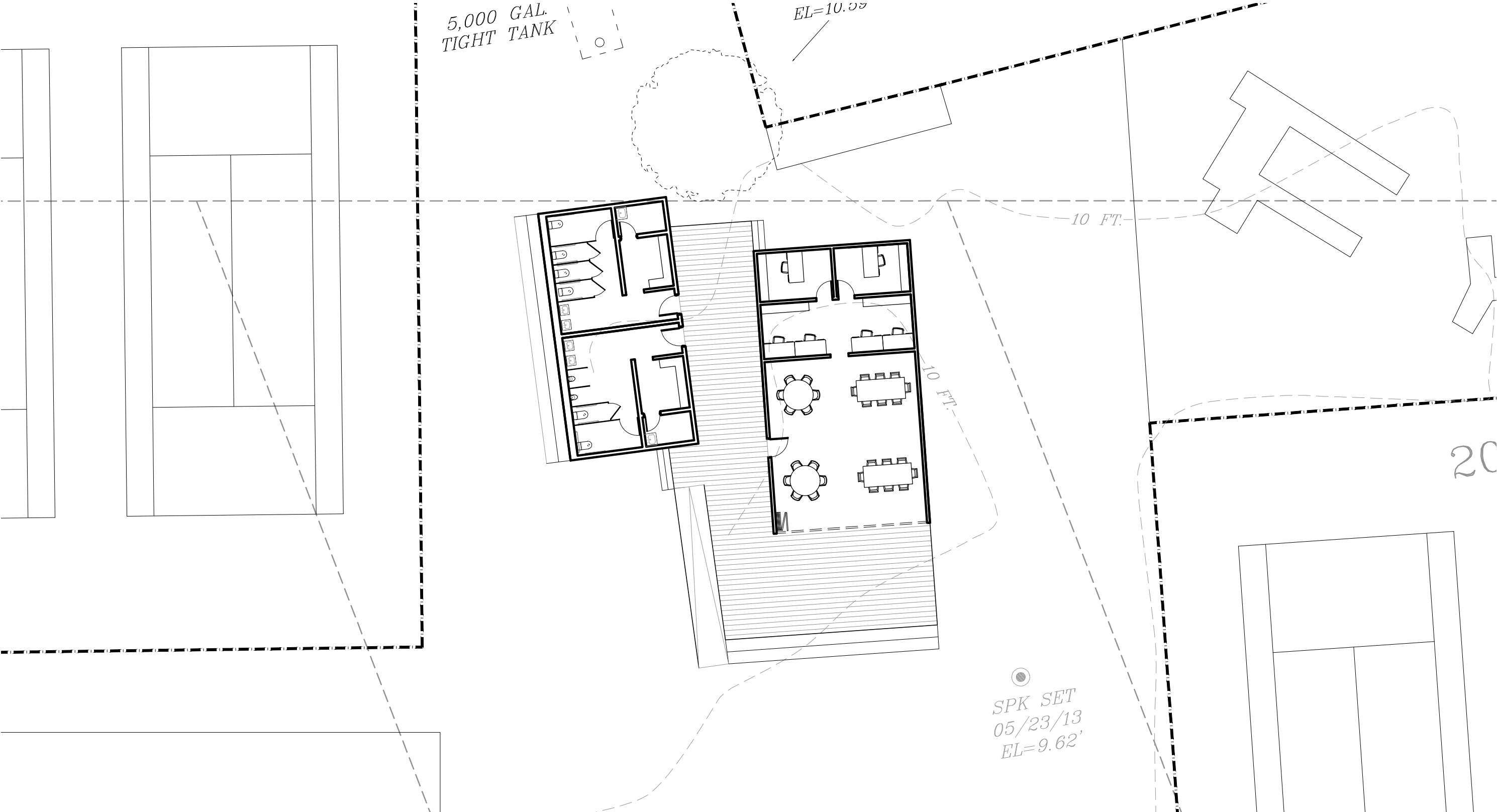


Option 4



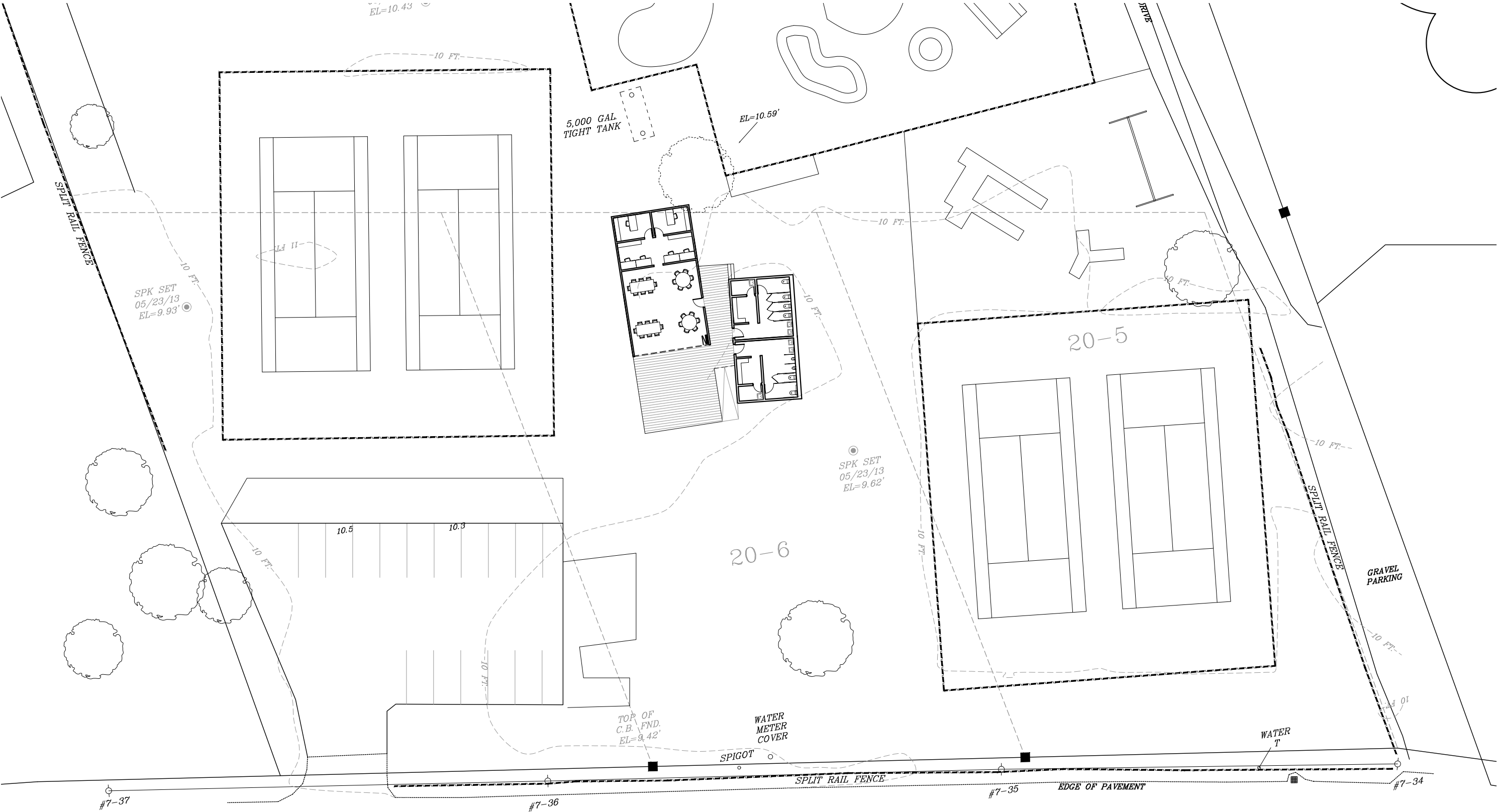
1/32" = 1'0"

Option 4



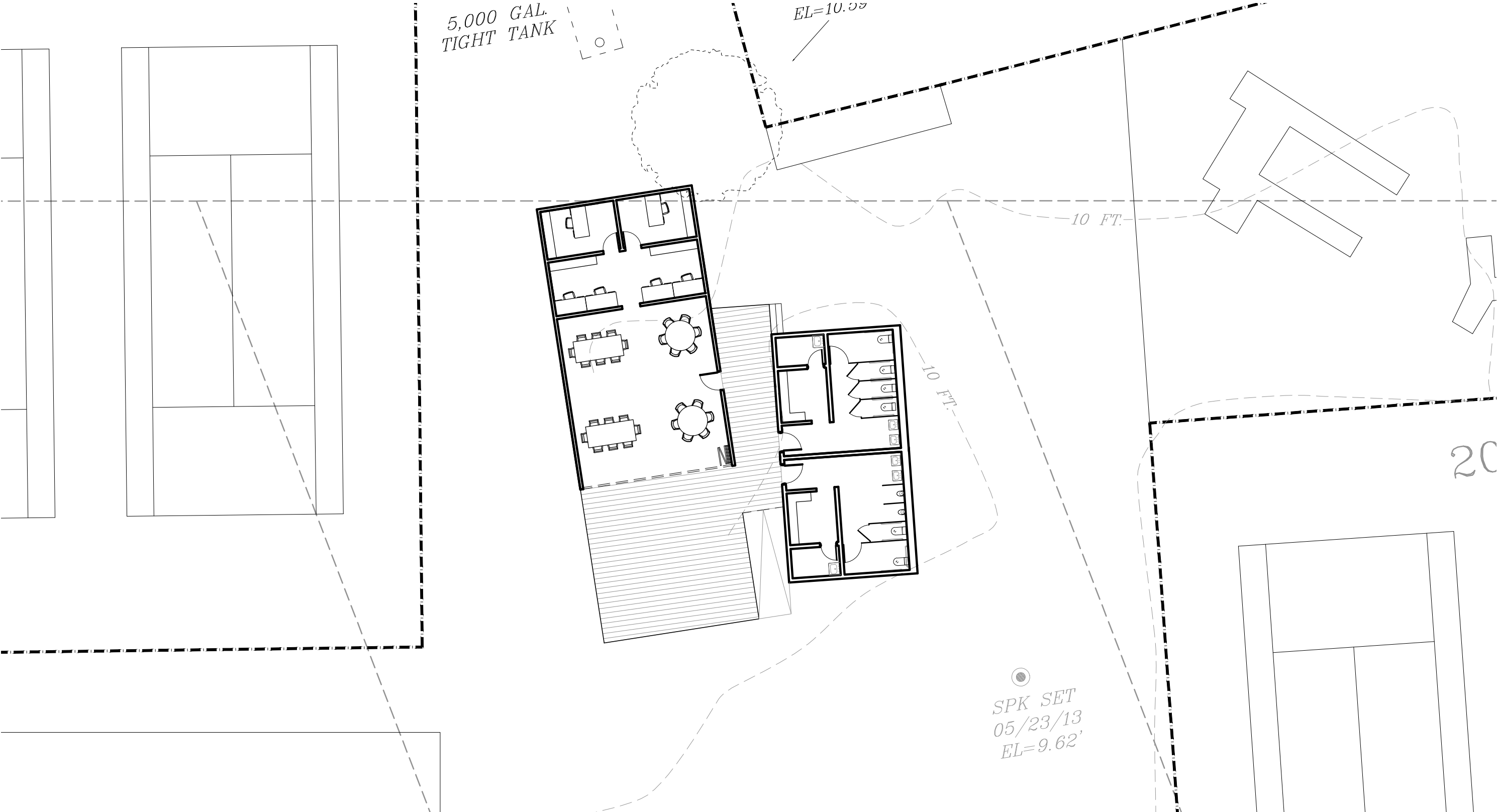


Option 5



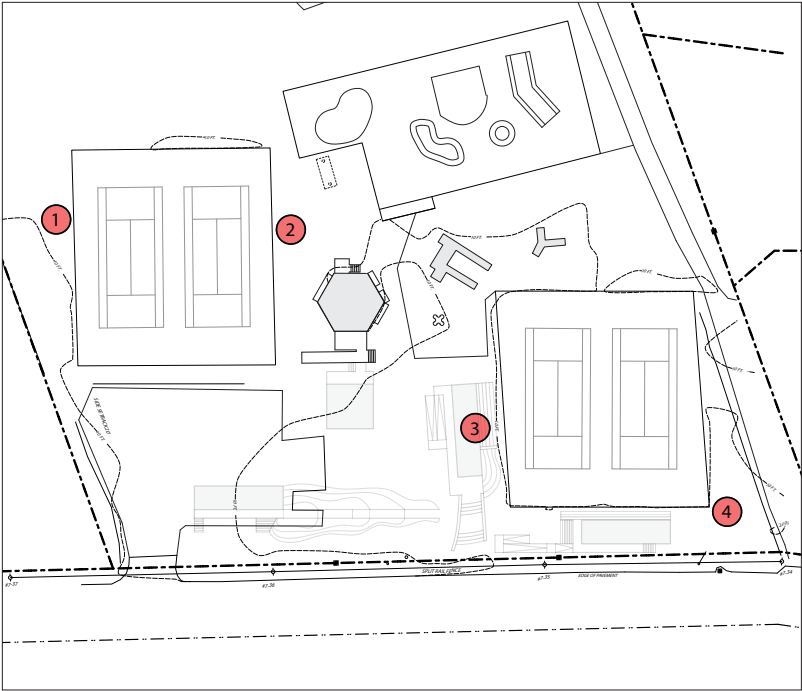
1/32" = 1'0"

Option 5





Building Placement



FLOOD PLAIN = 13'-0" -  
FINISH FLOOR A

AVERAGE GRADE = 10'-0"

#2 PERCH = 6'-6" -

#3 PERCH = 4'-6" -

#4 = 4'-0" -

#1 = 3'-0" -

#3 = 2'-0" -

#2 = 1'-6" -

