

The Wellfleet Bike & Walkways Committee Virtual Meeting – Zoom

Friday, December 4, 2020 at 9am

Meeting Minutes

1. *Call to Order* - Rebecca called the meeting to order at 9:02

2. *Review committee's official charge* - Rebecca read the charge which tasks the committee "to consider ways to provide safe areas for biking and walking," including: work with National Seashore, Truro and Provincetown, and Cape Cod Commission to continue bike trail Northward to Provincetown, as well as future walk and bike routes; 5 members appointed by Board of Selectmen.

3. *Committee organization* – Welcome new members Pete Cook and Lance Miller

a. *Elect committee officers*: Ned nominates, and Lance seconds Pete for Chair – all members vote in favor. Pete nominates Rebecca for Vice Chair, and Ned seconds, all vote in favor. (Note: to be revisited in June when her term expires). Rebecca nominates Christie to be minute taker, Pete seconds the motion and all vote in favor.

b. *Consider committee objectives* – **Set short and actionable goals that can be achieved in the next 6-months.** Pete moves that members develop ideas for near term objectives and report them to Chair and Vice Chair to be presented at the next meeting. Ned seconds the motion and all vote to approve.

c. *Set meeting schedule* – For a period of three months: meet bi-weekly. **Next meeting: December 18 at 9am**, January 8 and so forth until March 26th at which point the goal will be to move to monthly or every other month meetings. Pete moves to set the schedule, Christie seconds and all approve. **Christie will announce the proposed schedule at the beginning of the next meeting.**

d. *Establish meeting rules to invite public comment* – Keep opportunity for input open while also protecting productivity of the meeting. Establish guidelines and expect civility. Group deliberates and proposes that we invite public comment and input at the end of each agenda item with a one-minute limit for each speaker. Welcome more feedback through email, as well as proposals to the committee that can become future agenda items. Christie moves to formally adopt guidelines; Rebecca seconds the motion and all approve. **Christie will announce the rule at the beginning of the next meeting.**

4. *Post-covid bicycle safety event (similar to the community event in 2019)* - Pete proposes that we lay the groundwork to recreate the 2019 Bike Rodeo when appropriate - a collaboration with the Town Recreation, Elementary School, Police Department and the Committee to create an opportunity for children to celebrate biking and learn bike safety. **Christie will look at the past plans, create a framework for moving forward a future event, and make initial contact with appropriate organizations to make them aware of our intention.** Pete moves that Christie and Rebecca frame a future plan, Lance seconds, and all approve.

5. *Alternatives for a bikeway from South Wellfleet to Truro*

a. *Review DCR bikeway plan as presented* – DCR presented in March 2020 public meeting, video available at <http://viewer.earthchannel.com/PlayerController.aspx?PGD=wellfleetma&eID=258>. Letter of concern (as requested at Town Meeting) was presented to DCR by Selectboard in August 2020

(Attachment 1). On September 24, 2020 DCR commissioner responded in a letter (Attachment 2) reporting that they elected to phase their plan – starting with the Lecount Hollow Rd. trailhead to Wellfleet Hollow State Campground. As requested, future plans have been placed on hold. DCR does not own any right of ways outside of the former railbed “and would defer any feasibility studies to the Town and other parties.” DCR expressed that they believe the safest way for all ages is to continue to Rt. 6. The Selectboard letter was mentioned in reference, and Rebecca read the DCR letter in full.

b. *Review DOT plan for Route 6 and Main Street as presented* – Rebecca read the letter from Stantec (working under contract to both DOT and the Town of Wellfleet) summarizing their plan. The reconstruction would create a 10-foot wide multi-use sidewalk on Easterly side of Route 6, a 6-foot wide sidewalk on Westerly side of Route 6, and 6-foot wide shoulders (painted with bike lane sharrows) on each side of Route 6; also, to widen the first 450 feet of Main Street to include new 5-foot wide shoulders and a 5.5-foot wide sidewalk (Attachment 3).

c. *Review key portions of Cape Cod Commission bikeway report* – Rebecca read “Outer Cape Bicycle and Pedestrian Master Plan,” published in September 2016 and updated in February 2017 for the National Park Service by the Cape Cod Commission. Regarding the area around Route 6, prior to DCR and DOT reports, pages 42 and 43 acknowledge that the route along Old Kings Highway and the utility corridor should be reconsidered due to the risks created by the numerous curb cuts and the cemetery at the NE corner of Rt. 6 and Cahoon Hollow Rd. “The project team recommends further study to identify the most suitable option. The study area should stretch from the railbed/Route 6 vicinity in the south to the Gross Hill Road/Route 6 vicinity in the north” (p.43). See Attachment 4.

d. *Consider Wellfleet’s ongoing effort to meet with other entities to develop bike route alternatives* - Seems like the town has an ongoing opportunity to consult with Cape Cod Commission, National Seashore and Truro. Be proactive as a committee to work with Selectboard and Town Administrator – be a part of the solution to look at alternatives. Leadership lies with the Selectboard and we are a resource. Mr. Dick Elkin is Wellfleet’s representative with the Cape Cod Commission. He can facilitate meetings with the Cape Cod Commission staff. A Commission staff member mentioned to Dick that it would be helpful to receive communication from the Town Administrator if the Bike & Walkways Committee is to represent Town interests with the Commission. **Action: In collaboration with the town administrator, support a meeting with the Cape Cod Commission.** Discussion: Could the committee be helpful in creating the first draft of a memorandum of agreement (MOA) between the different agencies to lay out their roles and responsibilities regarding bikeway route analysis? For example, the Seashore is sensitive to budget issues so an MOA could presumably state as a ground rule that the Seashore will not incur new financial obligations in the partnership. **Potential future action to consider: Initiate an effort, with the Town Administrator as the committee’s initial contact, and ultimately the Selectboard, to develop a memorandum of agreement with external agencies.**

e. *Consider a methodology for identifying and evaluating bikeway routes* – DCR says that they defer to Wellfleet in order to figure out what to do next. The Town has an opportunity to find a plan that satisfies Wellfleet residents. Our committee needs to develop an analysis methodology that will serve the town’s interests in assessing bikeway alternatives. Pete moves that **Pete and Lance to work together to develop a draft methodology for the committee to provide feedback on**, Christie seconds and all approve.

f. *Consider criteria to be used for evaluating route alternatives* - Consider town concerns and gather input from planning board, historical commission, conservation commission and possibly others. System engineering – considers the population and the goals they have to meet. First criteria, safety for town members and businesses. Everything always comes back to Cape Cod Commission and a feasibility study. This confirms the need to schedule a meeting. Pete suggests that we draft a list of success criteria (for instance a list of attributes for the ideal alternative: safety, promote biking as a practical means of transportation, preserve Wellfleet's character, the extent to which we want to promote Wellfleet as a biking destination) for the purpose of sending to stakeholders for feedback and input so we can legitimately represent the town's interests. **Pete moves that Rebecca and Ned create a draft list of selection criteria**, Lance seconds and all approve.

g. *Consider accessibility requirements* – These have been misstated and/or misunderstood in past meetings, so it is important to ensure we have accurate information. What are DOT's accessibility standards, DCR's accessibility standards? Is it true that funding sources are the source of accessibility requirements? Pete moves that **Rebecca and Pete will research and clarify accessibility requirements**, Ned seconds and all are in favor. Future consideration: does the town have any accessibility goals beyond State and Federal requirements?

6. *Other bikeway and walkway issues in Wellfleet:*

a. A resident sent us some pictures and a suggestion about two areas in town with sidewalk space but no marking. We sent those pictures and information to the former Administrator and Police. Pete proposes that **Rebecca can follow-up on that and will report back at the next meeting**, and Christie seconds that motion. All vote in favor.

b. A news article about a walkway issue in Harwich that was resolved with the Town of Harwich represents an interesting success story of town/state collaboration. Some contacts were listed in the article. **Pete moves that he will contact them, look at the project and report on their successes and failures**. Christie seconds, and all vote in favor.

c. Lance brought up that there is no safe bikeway to get from South Wellfleet to North Wellfleet. A great future goal for the committee to consider. Cannon Hill Road on bay side. Some kind of crosswalk at LeCount Hollow would be a much-needed solution for bikers and pedestrians to access the bike path safely from South Wellfleet.

d. Thank you to Dick Elkin, Wellfleet representative to the Cape Cod Commission, for attending the meeting.

e. Christie will send a list of to-do's to the committee members from the minutes.

7. *Adjournment:* Pete adjourns the meeting at 11:03 and Lance seconds. All in favor.

4 *Attachments*

1. *Selectboard letter to DCR, August 2020*
2. *DCR letter to Selectboard, September 2020*
3. *Letter from Stantec to Town of Wellfleet, August 2020*
4. *Excerpts from "Outer Cape Bicycle and Pedestrian Master Plan," revised 2016*



**TOWN OF WELLFLEET
OFFICE OF THE SELECTBOARD**

300 MAIN STREET WELLFLEET MASSACHUSETTS 02667
Tel (508) 349-0300 Fax (508) 349-0305
www.wellfleet-ma.gov

August 26, 2020

Massachusetts State House
24 Beacon St.
Office of the Governor, Room 280
Boston, MA 02133

Dear Governor Baker, Lt Governor Polito and DCR Commissioner Jim Montgomery,

As members of the Wellfleet Selectboard, we represent our residents and taxpayers in all matters that important public issues. We are writing to bring to your attention a serious, ongoing public safety concern related to where the DCR plans to end the Cape Cod Rail Trail Bike Path in Wellfleet.

Our town is very supportive of continuing the Bike Path through Wellfleet and appreciates all the hard work and planning that has gone into the project. However, we do not support the current DCR plan, as it has the proposed Bike Path project terminus immediately abutting and corresponding with an expanded bike lane on Route 6 proposed by the DOT, at the busiest and most congested stretch of the highway in Wellfleet. At issue is the foreseeable increase in use of this dangerous section of road for cyclists to reach nearby attractions. Members of our community have repeatedly voiced their public safety concerns with this proposal at public meetings hosted by the DCR, and in smaller gatherings with DCR and DOT staff, but they feel that their valid considerations have been overlooked.

On April 23, 2019 at our Annual Town Meeting, citizens of Wellfleet voted almost unanimously in favor of Article 44, which requested

“that the Board of Selectmen, the Conservation Commission and the Planning Board consider alternate routes for the Bike Trail Extension and to ask the appropriate agencies to halt any planning or construction of the bike trail extension beyond Old County Road until those deliberations have occurred.”

Therefore, we formally request that the DCR postpone any further construction and planning of the bike trail extension beyond Old County Road (also known as Old Kings Highway) due to public safety concerns. We ask that in future planning, the DCR work with DOT staff, the Town, and the Superintendent of the Cape Cod National Seashore, to seek alternative routes and safely continue the Cape Cod Rail Trail through Wellfleet.

We request your help in giving the Town of Wellfleet an effective role in this process, so that we may protect the safety of our citizens and our visitors.

Sincerely,

The Wellfleet Selectboard



Michael DeVasto, Chair

Janet Reinhart, Vice-Chair



Ryan Curley, Clerk



Helen Miranda Wilson

Justina Carlson

CC:

The Honorable Lt. Governor Karen Polito
DCR Commissioner Jim Montgomery



**TOWN OF WELFLEET
OFFICE OF THE SELECTBOARD**

300 MAIN STREET WELFLEET MASSACHUSETTS 02667
Tel (508) 349-0300 Fax (508) 349-0305
www.wellfleet-ma.gov

August 26, 2020

Massachusetts State House
24 Beacon St.
Office of the Governor, Room 280
Boston, MA 02133

Dear Governor Baker, Lt Governor Polito and DCR Commissioner Jim Montgomery,

As members of the Wellfleet Selectboard, we represent our residents and taxpayers in all matters that important public issues. We are writing to bring to your attention a serious, ongoing public safety concern related to where the DCR plans to end the Cape Cod Rail Trail Bike Path in Wellfleet.

Our town is very supportive of continuing the Bike Path through Wellfleet and appreciates all the hard work and planning that has gone into the project. However, we do not support the current DCR plan, as it has the proposed Bike Path project terminus immediately abutting and corresponding with an expanded bike lane on Route 6 proposed by the DOT, at the busiest and most congested stretch of the highway in Wellfleet. At issue is the foreseeable increase in use of this dangerous section of road for cyclists to reach nearby attractions. Members of our community have repeatedly voiced their public safety concerns with this proposal at public meetings hosted by the DCR, and in smaller gatherings with DCR and DOT staff, but they feel that their valid considerations have been overlooked.

On April 23, 2019 at our Annual Town Meeting, citizens of Wellfleet voted almost unanimously in favor of Article 44, which requested

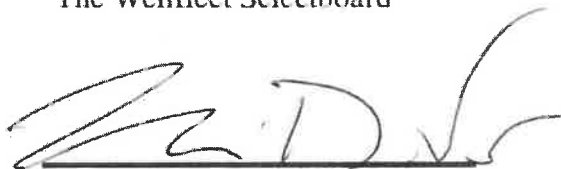
“that the Board of Selectmen, the Conservation Commission and the Planning Board consider alternate routes for the Bike Trail Extension and to ask the appropriate agencies to halt any planning or construction of the bike trail extension beyond Old County Road until those deliberations have occurred.”

Therefore, we formally request that the DCR postpone any further construction and planning of the bike trail extension beyond Old County Road (also known as Old Kings Highway) due to public safety concerns. We ask that in future planning, the DCR work with DOT staff, the Town, and the Superintendent of the Cape Cod National Seashore, to seek alternative routes and safely continue the Cape Cod Rail Trail through Wellfleet.

We request your help in giving the Town of Wellfleet an effective role in this process, so that we may protect the safety of our citizens and our visitors.

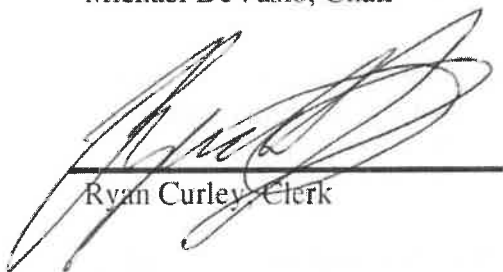
Sincerely,

The Wellfleet Selectboard



Michael DeVasto, Chair

Janet Reinhart, Vice-Chair



Ryan Curley, Clerk



Helen Miranda Wilson

Justina Carlson

CC:

The Honorable Lt. Governor Karen Polito
DCR Commissioner Jim Montgomery



**TOWN OF WELFLEET
OFFICE OF THE SELECTBOARD**

300 MAIN STREET WELFLEET MASSACHUSETTS 02667

Tel (508) 349-0300 Fax (508) 349-0305

www.wellfleet-ma.gov

August 26, 2020

Massachusetts State House
24 Beacon St.
Office of the Governor, Room 280
Boston, MA 02133

Dear Governor Baker, Lt Governor Polito and DCR Commissioner Jim Montgomery,

As members of the Wellfleet Selectboard, we represent our residents and taxpayers in all matters that important public issues. We are writing to bring to your attention a serious, ongoing public safety concern related to where the DCR plans to end the Cape Cod Rail Trail Bike Path in Wellfleet.

Our town is very supportive of continuing the Bike Path through Wellfleet and appreciates all the hard work and planning that has gone into the project. However, we do not support the current DCR plan, as it has the proposed Bike Path project terminus immediately abutting and corresponding with an expanded bike lane on Route 6 proposed by the DOT, at the busiest and most congested stretch of the highway in Wellfleet. At issue is the foreseeable increase in use of this dangerous section of road for cyclists to reach nearby attractions. Members of our community have repeatedly voiced their public safety concerns with this proposal at public meetings hosted by the DCR, and in smaller gatherings with DCR and DOT staff, but they feel that their valid considerations have been overlooked.

On April 23, 2019 at our Annual Town Meeting, citizens of Wellfleet voted almost unanimously in favor of Article 44, which requested

“that the Board of Selectmen, the Conservation Commission and the Planning Board consider alternate routes for the Bike Trail Extension and to ask the appropriate agencies to halt any planning or construction of the bike trail extension beyond Old County Road until those deliberations have occurred.”

Therefore, we formally request that the DCR postpone any further construction and planning of the bike trail extension beyond Old County Road (also known as Old Kings Highway) due to public safety concerns. We ask that in future planning, the DCR work with DOT staff, the Town, and the Superintendent of the Cape Cod National Seashore, to seek alternative routes and safely continue the Cape Cod Rail Trail through Wellfleet.

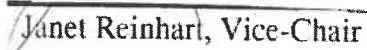
We request your help in giving the Town of Wellfleet an effective role in this process, so that we may protect the safety of our citizens and our visitors.

Sincerely,

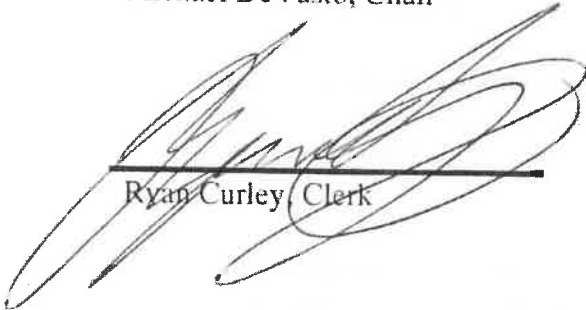
The Wellfleet Selectboard



Michael DeVasto, Chair



Janet Reinhart, Vice-Chair



Ryan Curley, Clerk



Helen Miranda Wilson



Justina Carlson

CC:

The Honorable Lt. Governor Karen Polito
DCR Commissioner Jim Montgomery



September 24, 2020

Mr. Michael DeVasto, Chair
Town of Wellfleet Select Board
300 Main Street,
Wellfleet, MA 02267

Dear Chairman DeVasto,

I just received your letter of August 26, 2020, expressing the Town's concerns over the extent and current timeline of the DCR Wellfleet extension project for the Cape Cod Rail Trail (CCRT).

Thank you for your input and communication. At this time DCR has elected to phase our project and only construct the CCRT extension from the Lecount Hollow trailhead to DCR's Wellfleet Hollow Campground. We hope to initiate construction of this project early next calendar year and complete it sometime in 2022. We believe that this Phase One project will be a benefit to both Wellfleet and Commonwealth residents.

While we appreciate your desire to explore alternative shared-use pathway routes north of Old County Road, DCR does not own any other rights of way and would defer any feasibility studies to the Town and other parties. In addition, DCR continues to believe that the safest and best approach for users of the CCRT, and for Wellfleet residents of all ages, will be to continue the CCRT on the former railroad corridor to a new terminus trailhead at Route 6. However, as requested, we have placed those plans on hold for the present.

As a part of our current project, we do ask that the Town work with DCR to provide temporary alternative parking for the Lecount Hollow trailhead near the Chamber of Commerce on the Town-owned old State Highway.

We hope that this addresses the Town's concerns, and we look forward to working with you as the Phase One project moves into construction. Please feel free to reach out to me again, or to Craig Cashman, DCR Director of Legislative Affairs, (craig.r.cashman@mass.gov), or Paul Jahnige, DCR Director of Trails and Greenways (paul.jahnige@mass.gov) with any questions.

Sincerely,


Jim Montgomery
Commissioner

CC: Maria Broadbent, Town Administrator, Maria.Broadbent@Wellfleet-MA.gov
Senator Julian Cyr Julian.Cyr@masenate.gov
Rep. Sarah Peake: Sarah.Peake@mahouse.gov
Craig Cashman, DCR
Paul Jahnige, DCR

COMMONWEALTH OF MASSACHUSETTS · EXECUTIVE OFFICE OF ENERGY & ENVIRONMENTAL AFFAIRS

Department of Conservation and Recreation
251 Causeway Street, Suite 600
Boston, MA 02114-2199
617-626-1250 617-626-1351 Fax
www.mass.gov/orgs/departments-of-conservation-recreation



Charles D. Baker
Governor

Karyn E. Polito
Lt. Governor

Kathleen A. Theoharides, Secretary, Executive
Office of Energy & Environmental Affairs

Jim Montgomery, Commissioner
Department of Conservation & Recreation



Stantec Consulting Services Inc.
65 Network Drive, 2nd Floor, Burlington, MA 01803-2767

July 24, 2020

To: Town of Wellfleet

Michael DeVasto, Selectboard Chair
Deborah Freeman, Chair, Conservation Commission
Hillary Greenberg-Lemos, Agent, Health/Conservation Department
Gerald Parent, Chair, Planning Board
Sharon Inger, Chair, Zoning Board of Appeals
Mark Vincent, Director, Department of Public Works
Chief Richard Pauley, Jr., Wellfleet Fire & Rescue
Chief Michael P. Hurley, Wellfleet Police Department
Bike & Walkways Committee
John Riehl, Chair, Natural Resources Advisory Board
Bonnie Robicheau, Chair, Cemetery Commissioners

Cc: Mr. Brian Chapman, Massachusetts Department of Transportation – Highway Division

From: Jill McLaughlin, P.E., Stantec Consulting Services, Inc.

**Re: Route 6 at Main Street Intersection Improvements
Wellfleet, Massachusetts**

The Town of Wellfleet, in coordination with the Massachusetts Department of Transportation, is advancing the design of intersection improvements at Route 6 at Main Street. Stantec Consulting Services, Inc. are providing design services in support of this project.

The purpose of this project is to implement roadway safety improvements and provide accommodation for all modes of travel. The project extends along Route 6 for approximately 0.5-mile (2,700 feet) from about 700' north of the Main Street intersection west to end of the future Cape Cod Rail Trail Extension (south of Oriole Lane). The project also consists of the reconstruction of approximately 450 feet of Main Street.

Route 6 is currently envisioned to be reconstructed to feature one 11.0-foot wide travel lane and a 6.0-foot wide shoulder in each direction. Proposed Route 6 improvements also include a southbound left-turn pocket at the Cahoon Hollow Road intersection and left-turn pockets in both directions at the Main Street intersection. Bicycle accommodation will be provided on the roadway shoulders of Route 6. Pedestrians will be accommodated on a 10.0-foot wide sidewalk on the easterly side of Route 6 and a

Design with community in mind



Page 2 of 2

5.0-foot wide sidewalk on the westerly side. Proposed improvements on Main Street include 11.0-foot wide travel lanes, 5.0-foot wide shoulders, and a 5.5-foot wide sidewalk on the northerly side of the street.

A locus map featuring the proposed trail is shown in Figure 1.

We request that you review this letter and locus map at your earliest convenience and provide any comments that you wish to make regarding this project. We would appreciate your response by August 31, 2020.

Written comments and questions should be submitted electronically to:

Stantec Consulting Services, Inc.
Attn: Jill McLaughlin, Associate
Jill.mclaughlin@stantec.com

400 Crown Colony Drive, #200
Quincy, MA 02169
(508) 591-4376

Regards,

A handwritten signature in black ink that reads "Jill C. McLaughlin".

Jill McLaughlin, P.E.

Associate
Jill.mclaughlin@stantec.com
Phone: (508) 591-4376

V:\1794\active\179410191\GIS\Wellfleet Locus.mxd Date: 6/11/2020

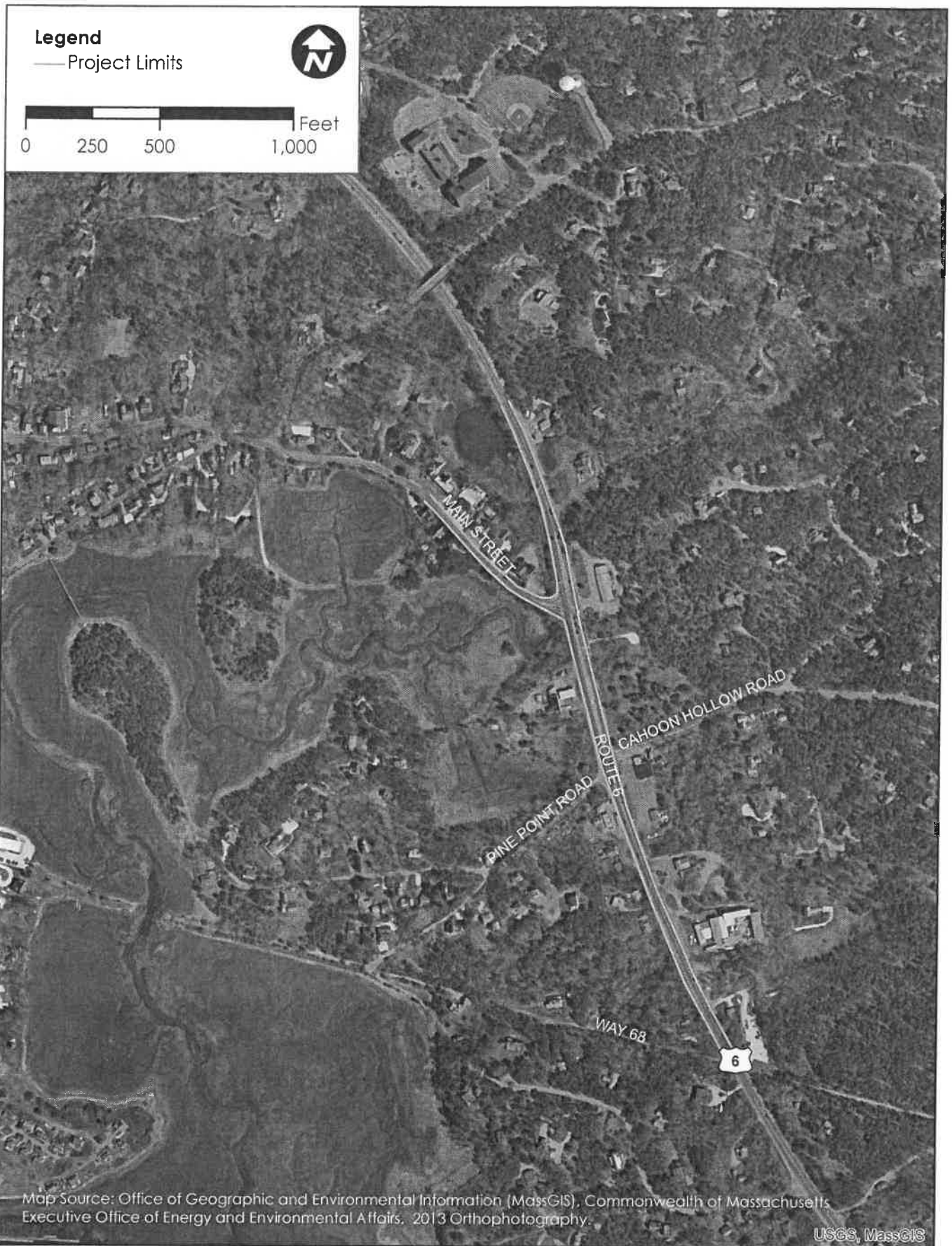


Figure 1 - Project Locus

Route 6 and Main Street Intersection Improvements
Wellfleet, Massachusetts
Project No. 607397

Outer Cape Bicycle and Pedestrian Master Plan Final Report

prepared for NATIONAL PARK SERVICE
BY CAPE COD COMMISSION
SEPTEMBER 2016
updated FEBRUARY 2017

ISSUES REQUIRING FURTHER CONSIDERATION, Page 42-43

A more detailed evaluation of possible route designs between the Wellfleet railbed and the Route 6/Main Street area in Wellfleet is needed. Extending the primary route through this area generated a substantial amount of public comment due to concern about safety and character impacts along Cahoon Hollow Road. Commercial uses on Route 6 near Cahoon Hollow Road have numerous curb cuts and heavy usage, especially during the summer months. The slope of Cahoon Hollow Road and the cemetery at the northeast corner of Route 6 and Cahoon Hollow Road also pose challenges. Alternative routes through this area should be explored, including placing the route within the Route 6 right-of-way, placing the route behind existing commercial uses and the cemetery, placing the route along the Old Kings Highway and Cahoon Hollow Road to Route 6, and placing the route along the previously considered and dismissed utility corridor. All of these options also present challenges including private property, cultural and natural resource impacts, and topography (which is why they were not selected for the route); however, given public concern about this portion of the primary route, the project team recommends further study to identify the most suitable option. The study area should stretch from the railbed/Route 6 vicinity in the south to the Gross Hill Road/Route 6 vicinity in the north.

RECOMMENDATIONS, page 47

Where the railroad bed meets Route 6 is an area of concern due to the large number of commercial curb cuts and heavy traffic volumes. Further study is needed to identify the best route for bicyclists for the approximately half mile between the railroad bed and the Route 6/Main Street intersection.

