

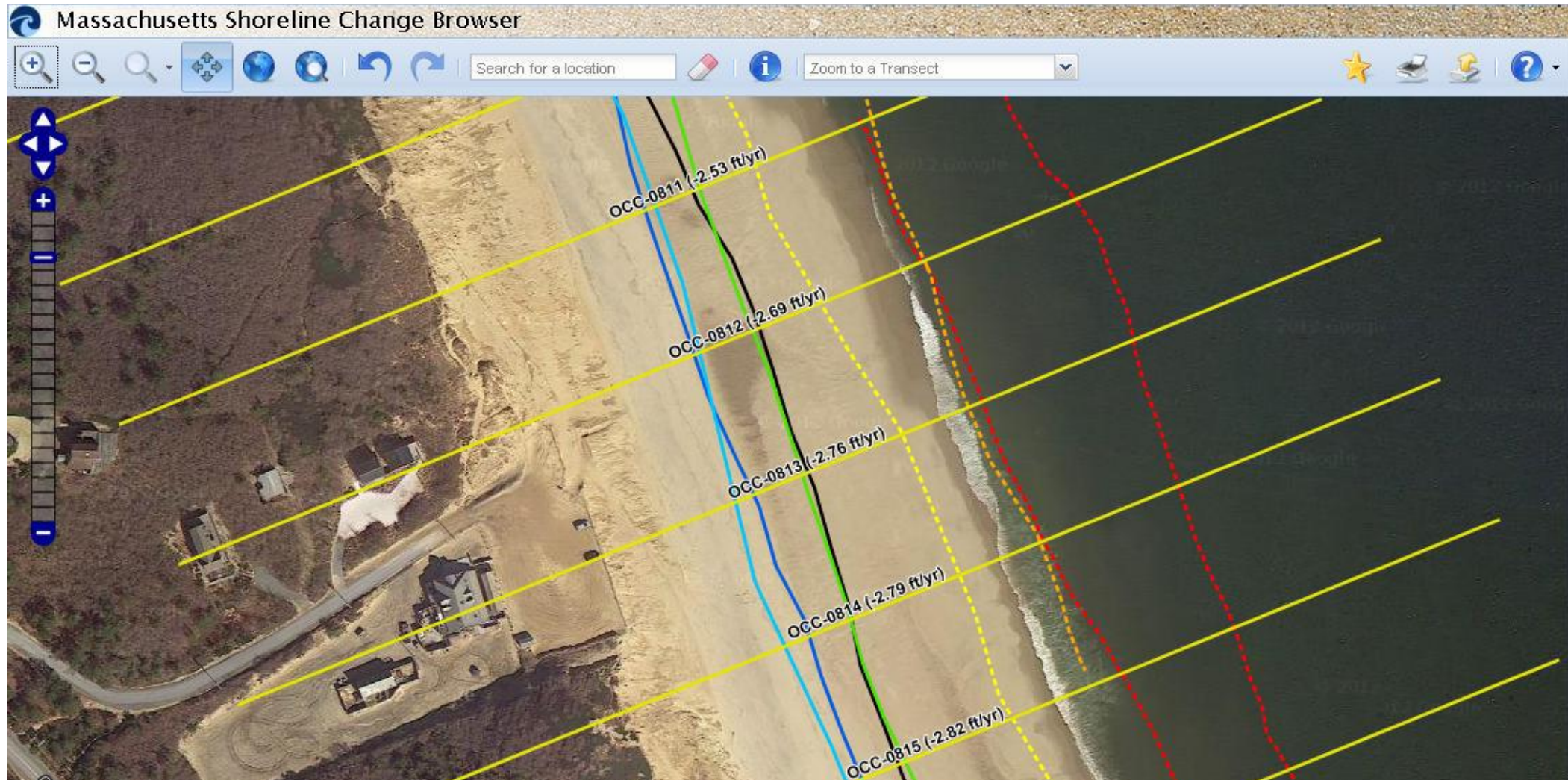


# What is Happening to Our Beaches?

**An Ever Changing Profile**

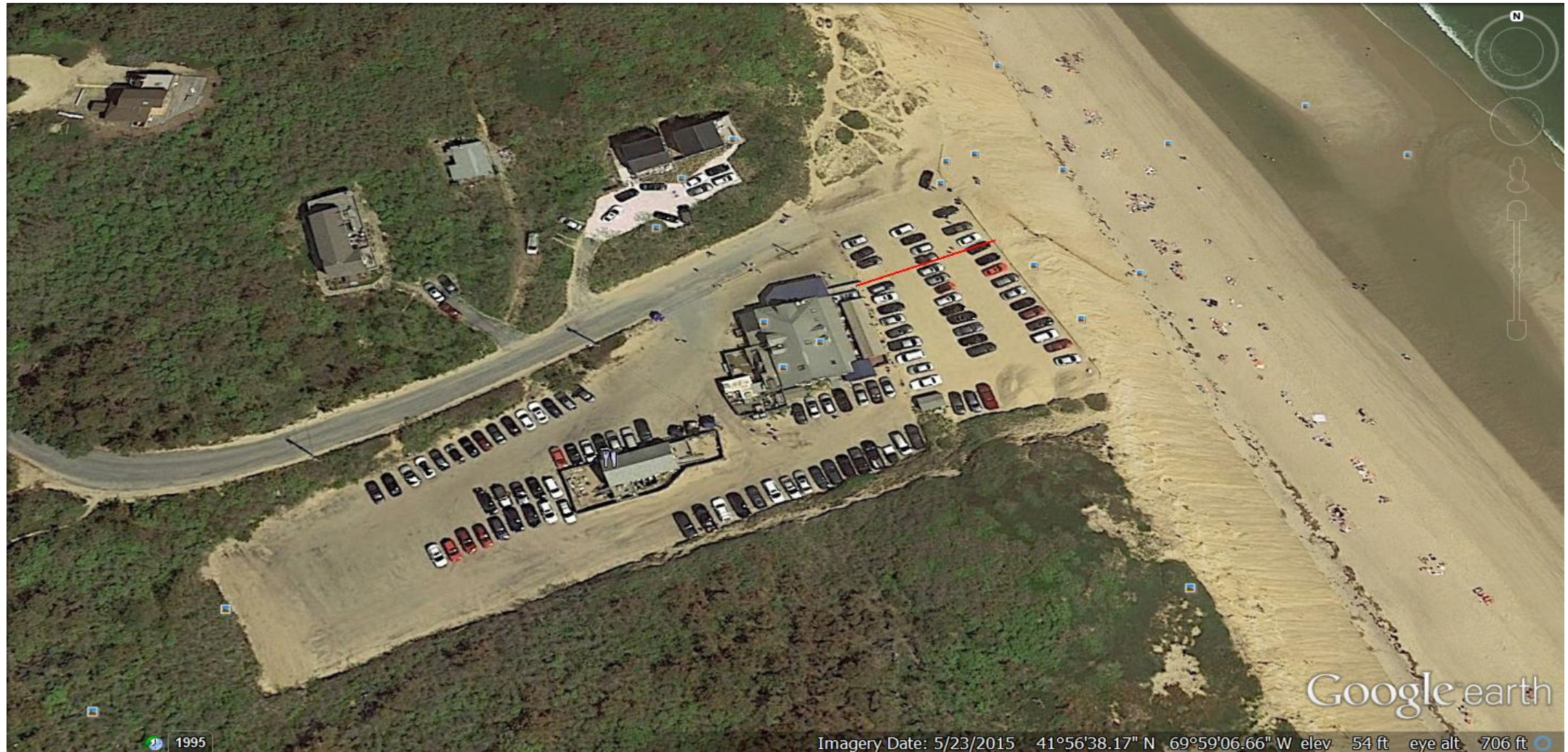
# Cahoon Hollow – 1844 to 2009

## Erosion on the Atlantic averages 2.9 ft. /year





# Cahoon Hollow 2015 – red line measures to the top of the dune





# Cahoon Hollow – Google Earth 2012 – red line shows 2015 measurement





# Cahoon Hollow post Hercules – 3/26/14



Cahoon Hollow post Hercules 2014 – note the artificially extended perimeter of the parking lot



Newcomb Hollow 2003/2004

*Photographs courtesy of Dwight Estey*



# Newcomb Hollow, December 2003





# Newcomb Hollow, January 25, 2004



# Newcomb Hollow, January 25, 2004

## Looking East from the stair remnants





# Newcomb Hollow, February 10, 2004

## Looking South from the parking lot



# Newcomb Hollow, February 19, 2004

## Looking North from the parking lot





# Newcomb Hollow, February 19, 2004



February 20, 2004





February 20, 2004

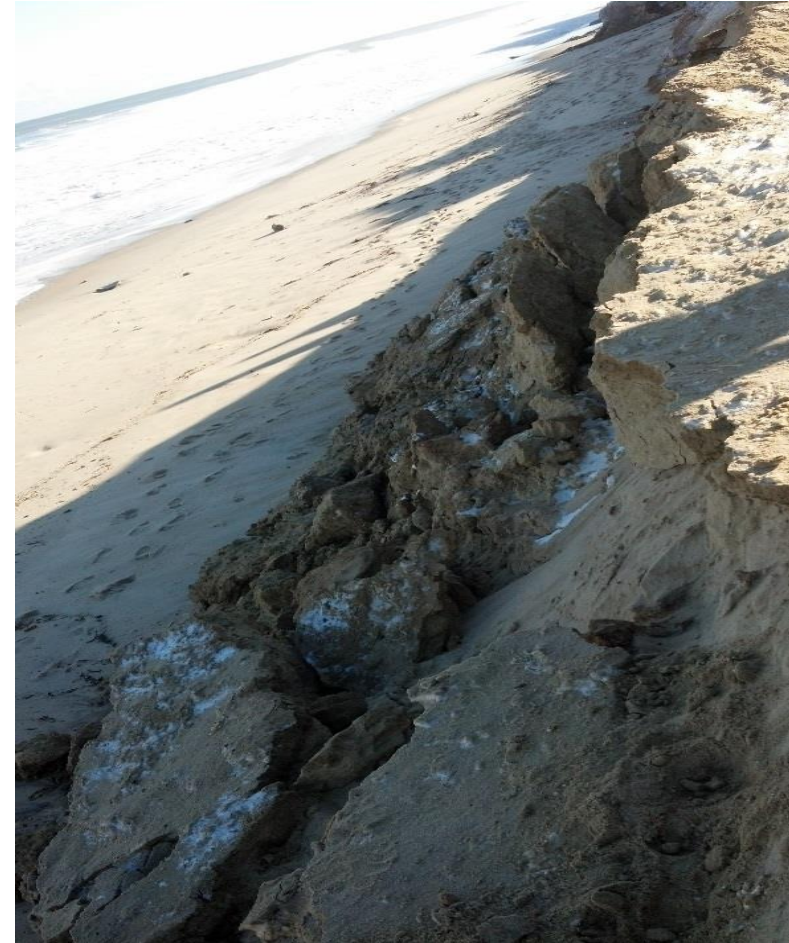


March 4, 2004





# Newcomb Hollow 2014



# Newcomb Hollow 2017 – Clay Slump



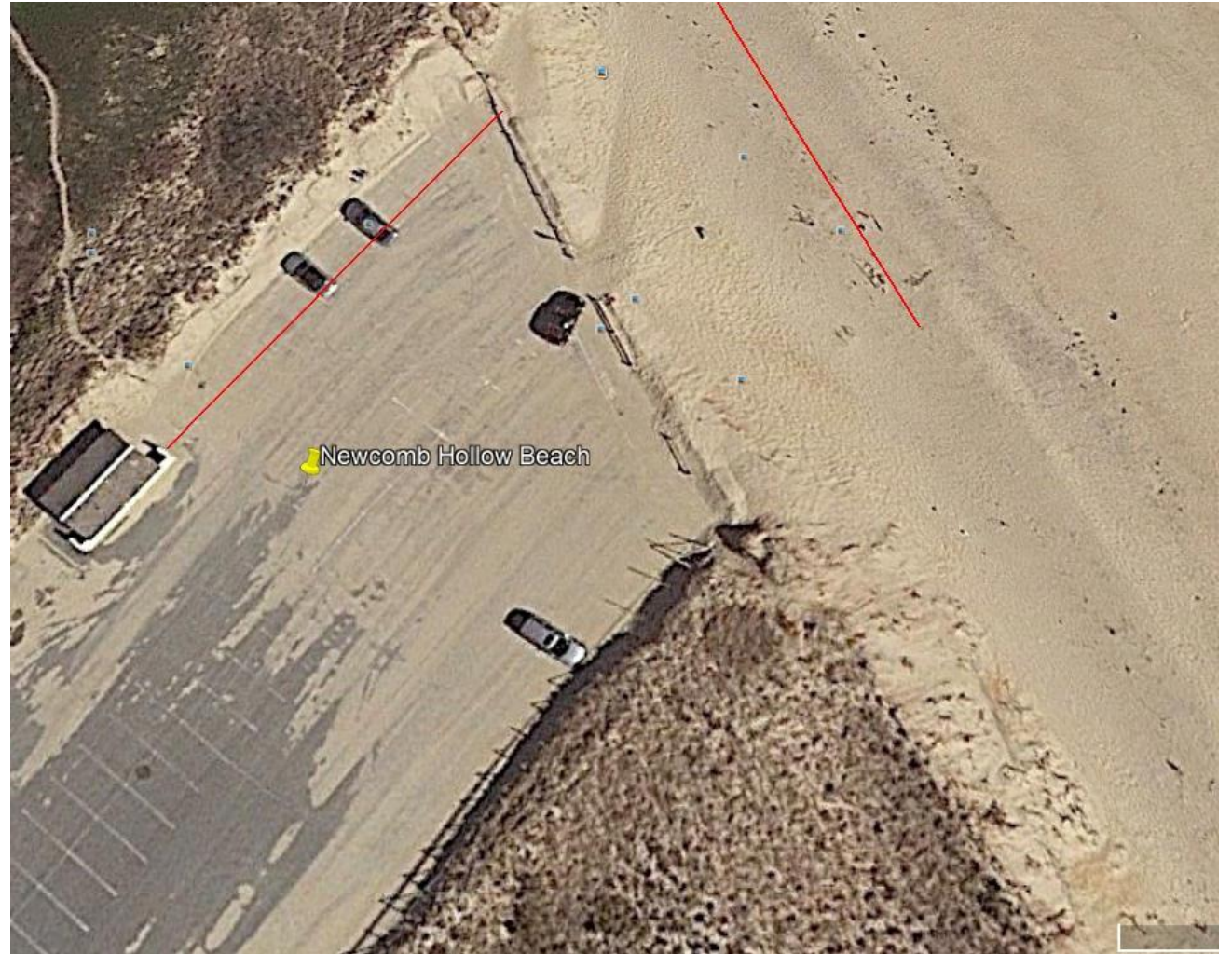


# Newcomb Hollow 2017



## Newcomb Hollow

In 1994, following a storm, the parking lot at Newcomb Hollow was cut back 30' to allow safe access and the natural declination of the dune to 240' from the eastern edge of the bathhouse. In 2004, it was cut back once more to 160' from the eastern edge of the bathhouse. In 2017, it was 125' from the bathhouse.





# Cahoon Hollow 2013 – deluge on Labor Day



# Cahoon Hollow 2017 – after the blowout





# Cahoon Hollow 2017



# Cahoon Hollow 2017

## Car washed into the blowout





# LeCount Hollow/Maguires Landing 2014



# LeCount Hollow 2014





# What Are We Doing?

- Allowing the natural process to proceed
- Educating people
- Planning for future needs of beachgoers
  - Replacement of lost parking spots
  - Exploration of other potential parking areas in Town